

# HARDIMANS



**5 Turner Cottage St. Johns Road**  
, Lowestoft, NR33 0PN  
**£110,000**



**5 Turner Cottage St. Johns Road, Lowestoft, Suffolk, NR33 0PN**

NO CHAIN with this Charming character cottage tucked away in a small terrace to the rear of St Johns Road in south Lowestoft. The property can easily be accessed from a large car park which also provides potential parking should you wish to obtain a yearly parking permit with East Suffolk Council (subject to a fee).

The property has been tastefully renovated to retain original features such as pine floor boards, together with contemporary style kitchen and bathroom.

Presented in great condition.

**UPVC double glazed door to:-**

**SITTING ROOM**

upvc double glazed window, fireplace with open flue, electric radiator, laminate flooring.

**GOOD SIZE KITCHEN/DINER**

re-fitted in a range of light grey fronted units, single drainer sink, recess and plumbing for automatic washing machine, space for cooker, extractor fan, tiled splashbacks, cottage stairs to first floor, glazed door to:-

**REAR LOBBY**

with upvc double glazed door.

**BATHROOM**

cased bath, hot and cold shower mixer, shower screen, vanity washbasin, low level wc, part tiled walls and floor, upvc opaque glazed window, extractor fan, chrome towel rail/radiator.





**STAIRS TO FIRST FLOOR AND LANDING**  
built-in airing cupboard, lagged fornic tank.

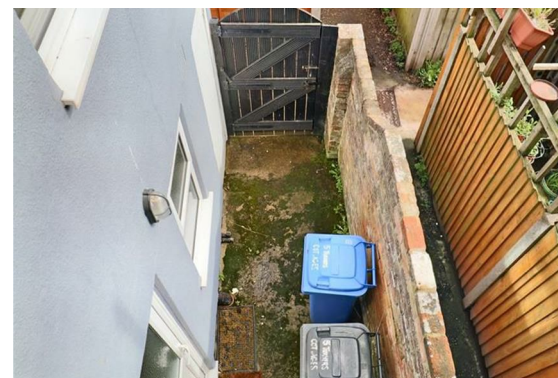
**BEDROOM 1**  
2 windows with upvc double glazing, ornamental fireplace, electric radiator, feature pine floor boards.

**BEDROOM 2**  
upvc double glazed window, electric radiator, feature pine floor boards, door to:-

**BEDROOM 3**  
upvc double glazed window, electric radiator, laminate flooring.

**OUTSIDE**  
To the front, communal forecourt providing access to numbers 6 and 7. To the side, communal passageway providing pedestrian access. To the rear, small enclosed courtyard with out building and gate, further communal passageways providing access onto St Johns Road.

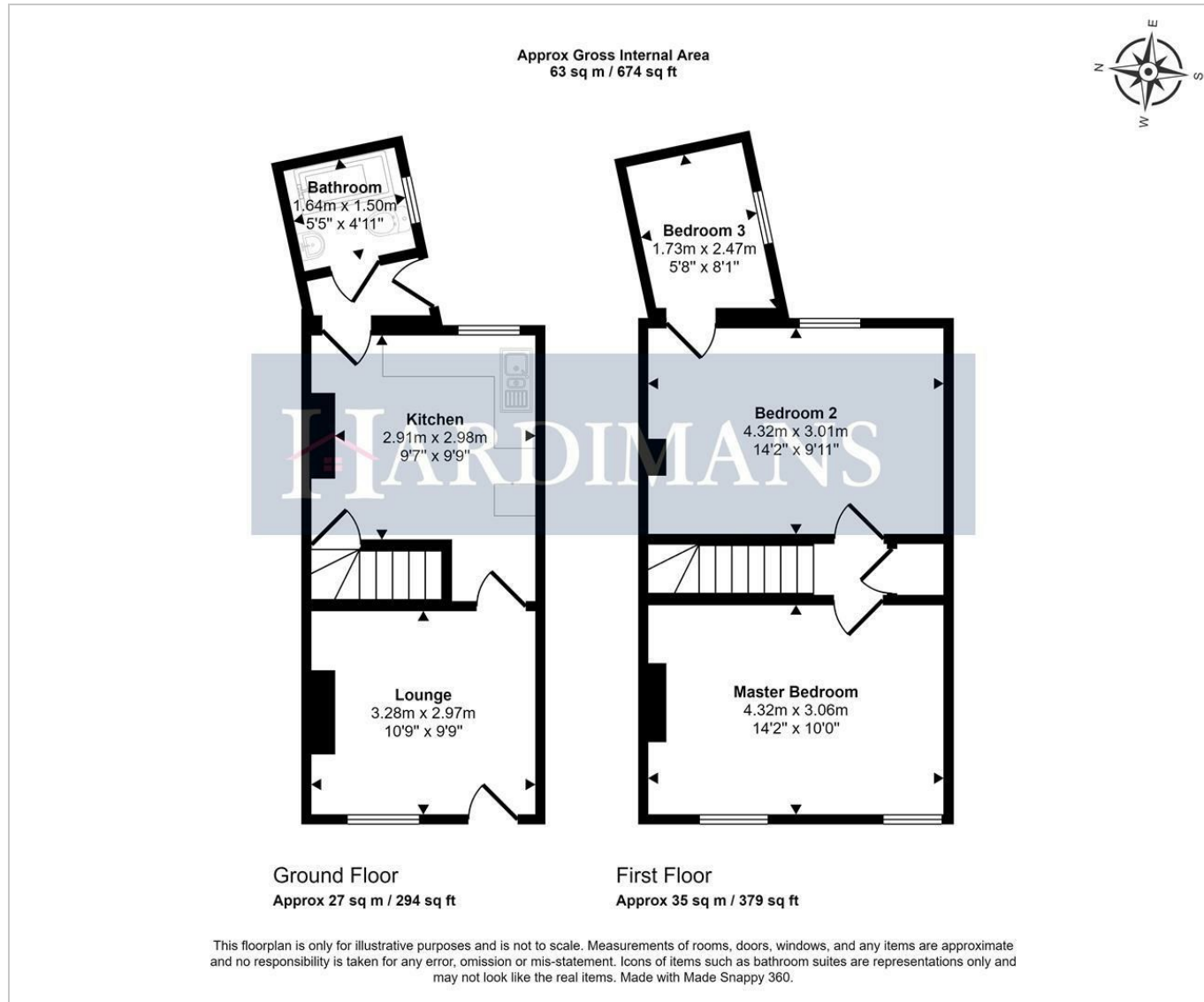
**COUNCIL TAX BAND 'A'**



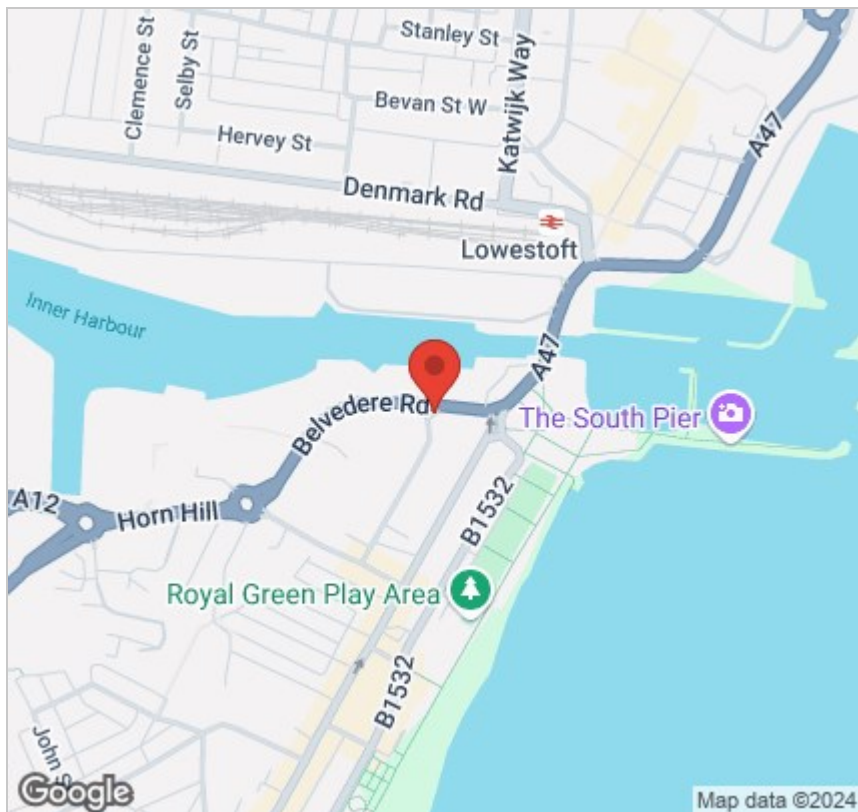




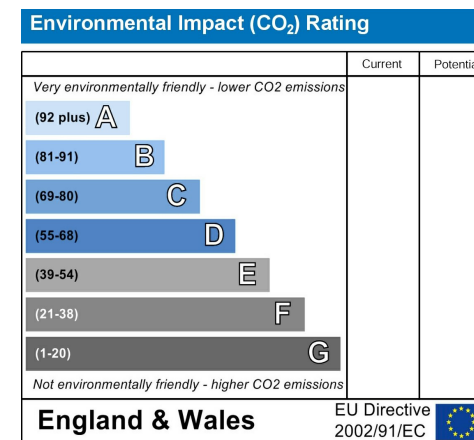
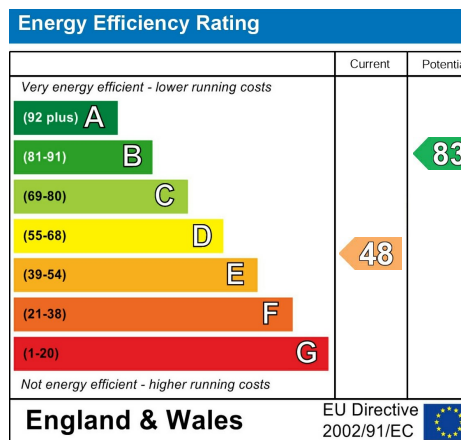
# Floor Plan



## Area Map



## Energy Efficiency Graph



## Viewing

Please contact our Lowestoft Office on 01502 515999 if you wish to arrange a viewing appointment for this property or require further information.

These particulars, whilst believed to be accurate are set out as a general outline only for guidance and do not constitute any part of an offer or contract. Intending purchasers should not rely on them as statements of representation of fact, but must satisfy themselves by inspection or otherwise as to their accuracy. No person in this firm's employment has the authority to make or give any representation or warranty in respect of the property.



134 London Road North, Lowestoft, Suffolk NR32 1HB  
**Tel: 01502 515999**  
[www.hardimans.co.uk](http://www.hardimans.co.uk) E: [info@hardimans.co.uk](mailto:info@hardimans.co.uk)

