



54 Churchill Rise

, Chelmsford, CM1 6FD

£1,000 PCM



Elwell Taylor are pleased to offer this spacious one bedroom ground floor flat for rent with parking.



ENTRANCE

Communal entrance to building with fob access.

HALLWAY

New front door, laminate flooring, 2 x storage cupboards, airing cupboard.

LOUNGE 14'2" > 12'0" x 12'9" (4.32 > 3.66 x 3.89)

Laminate wood flooring, patio doors to garden, radiator.

KITCHEN

Selection of wall and base units in white. Free standing fridge, freezer and washing machine. Integrated electric cooker and 4 ring gas hob. Splash back tiles. Window to rear.

BEDROOM 12'8" x 10'1" (3.86 x 3.07)

Double sized room with wood laminate floor, window to rear, radiator.

BATHROOM

Three piece suite comprising panel enclosed bath with electric shower, washbasin with cupboard under, WC as well as radiator, window to rear, toiled floor and part tiled walls.

EXTERNAL

To the front of the property, accessed from the lounge, there is a communal garden space. The garden is surrounded by a large hedge offering privacy.
1 parking space availale in communal car park, although the bays are not allocated.

INFORMATION

Holding fee: £230.00
Deposit: £1153.00

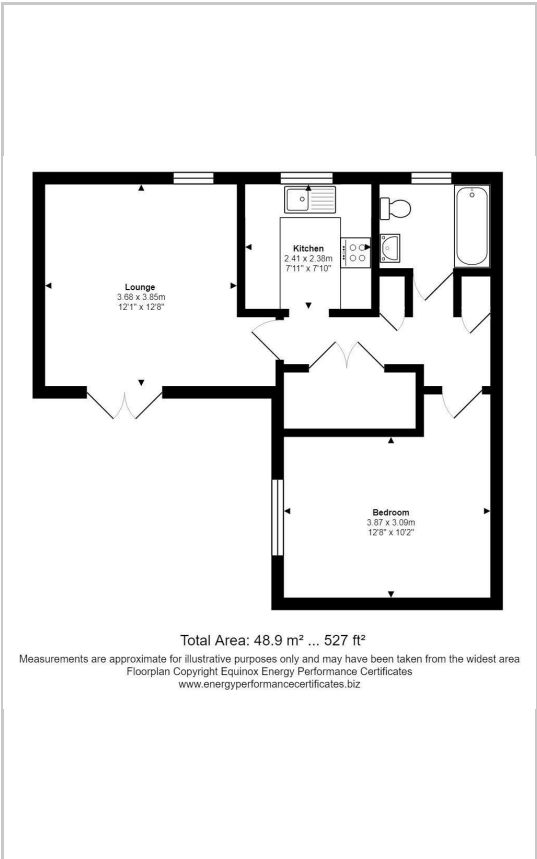
Applicants must be able to prove an annual salary of £30,000.00 or more.

Available: Feb 2026
No Pets.

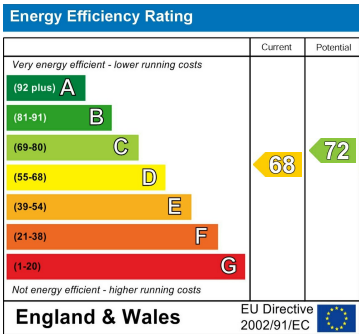
Area Map



Floor Plans



Energy Efficiency Graph



These particulars, whilst believed to be accurate are set out as a general outline only for guidance and do not constitute any part of an offer or contract. Intending purchasers should not rely on them as statements of representation of fact, but must satisfy themselves by inspection or otherwise as to their accuracy. No person in this firms employment has the authority to make or give any representation or warranty in respect of the property.