



171 Gloucester Avenue

Moulsham, Chelmsford, CM2 9DX

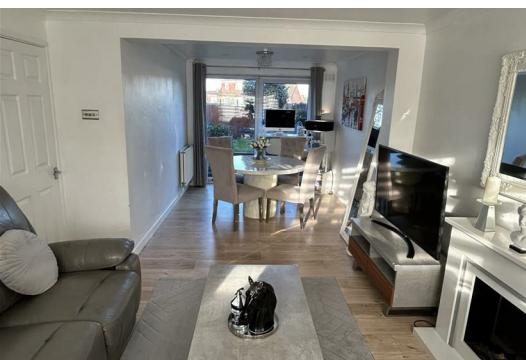
Offers In The Region Of £385,000



Upon entering, you are greeted by a spacious reception room that provides a warm and welcoming atmosphere, perfect for both relaxation and entertaining. The modern kitchen is equipped with integrated appliances, while the new doors and some new windows throughout the property add a touch of contemporary elegance. This property also benefits from a recent rewire throughout.

The house boasts a modern well-appointed bathroom, catering to all your daily needs. Additionally, the property benefits from a garage, providing valuable storage space or the potential for a workshop.

One of the notable features of this home is the boiler, which still has two years of warranty remaining, offering peace of mind for the new owner.



- Originally a 3 bedroom but converted to a spacious 2 bedroom house
- Highly sought-after Chelmsford location of Moulsham Lodge
- Driveway for 2 cars & garage to the rear
- Modern fitted kitchen with integrated washer/drier & Dishwasher
- New doors & some new windows
- Modern bathroom with shower over bath
- Local to Chelmsford City Centre
- Great school catchment area
- Recently rewired throughout
- Close to local amenities

INFORMATION
FREEHOLD

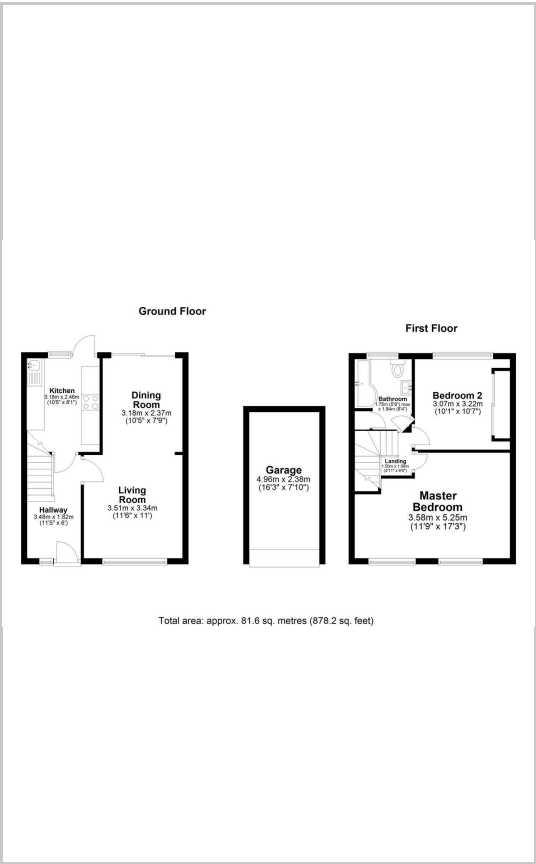
Call us on 01245 266088 to arrange a viewing.



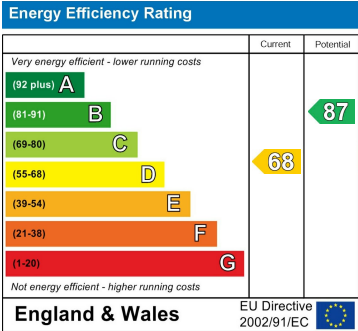
Area Map



Floor Plans



Energy Efficiency Graph



These particulars, whilst believed to be accurate are set out as a general outline only for guidance and do not constitute any part of an offer or contract. Intending purchasers should not rely on them as statements of representation of fact, but must satisfy themselves by inspection or otherwise as to their accuracy. No person in this firms employment has the authority to make or give any representation or warranty in respect of the property.