



11 Mildmay Road

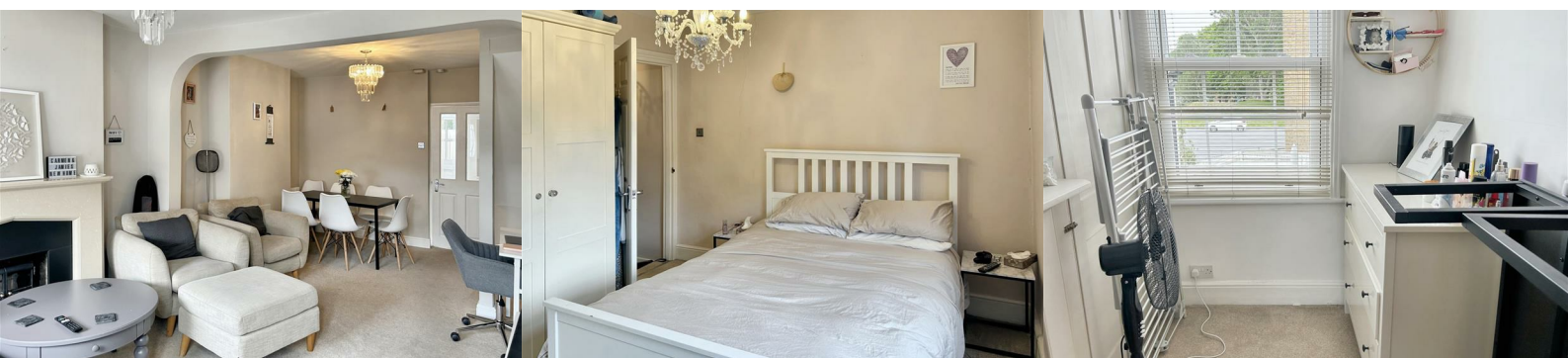
Old Moulsham, Chelmsford, CM2 0DN

£1,600



Delightful two bedroom period property in Old Moulsham, close to Chelmsford City Centre.

- * MODERN FITTED KITCHEN
- * 2 BEDROOMS
- * TERRACED HOUSE
- * CLOSE TO CITY CENTER
- * AVAILABLE FROM EARLY NOVEMBER 2025



ENTRANCE

Front door to lounge.

LOUNGE / DINING ROOM 20'7 x 12'01 (6.27m x 3.68m)

Carpet to floor, fireplace with electric fire, open plan to dining area. Window to front and door to street. Door to stairwell.

KITCHEN

Selection of wall and base level units in cream, sink and drainer. Space for washing machine. Dishwasher, electric oven and hob. Fridge/freezer. Tiled floor, window and door to rear courtyard garden.

BEDROOM 1 12'06 x 10'06 (3.81m x 3.20m)

Double bedroom with carpet to floor, window to front, fitted wardrobes and original feature fireplace.

BEDROOM 2 9'10 x 5'08 - + cupboards (3.00m x 1.73m - + cupboards)

Single bedroom with carpet to floor, window to rear, 2 x built in cupboards.

BATHROOM

Suite comprising a panel enclosed bath with shower over. Washbasin, WC and heated towel rail. Tiled floor, down lights.

EXTERNAL

To the rear there is a lovely courtyard garden space.

INFORMATION

Holding Fee: £369

Deposit: £1846

Available: mid November 2025

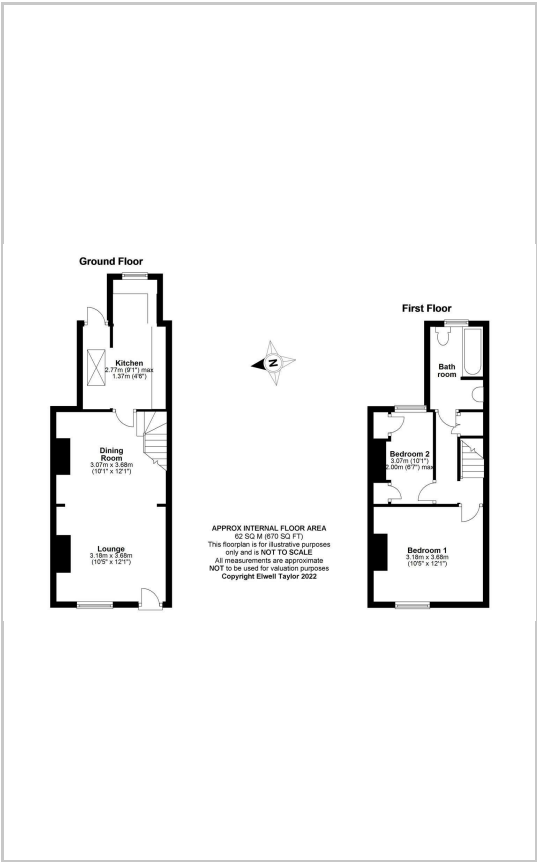
Applicants must be able to show an annual income of £48,000 or more.

Pets are not permitted.

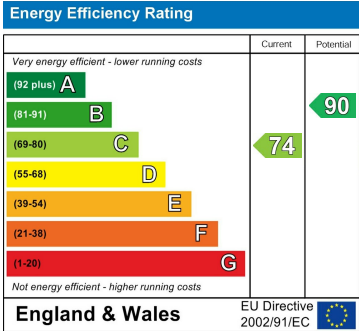
Area Map



Floor Plans



Energy Efficiency Graph



These particulars, whilst believed to be accurate are set out as a general outline only for guidance and do not constitute any part of an offer or contract. Intending purchasers should not rely on them as statements of representation of fact, but must satisfy themselves by inspection or otherwise as to their accuracy. No person in this firms employment has the authority to make or give any representation or warranty in respect of the property.