



# 1 Rectory Lane

, Chelmsford, CM1 1RR

£995

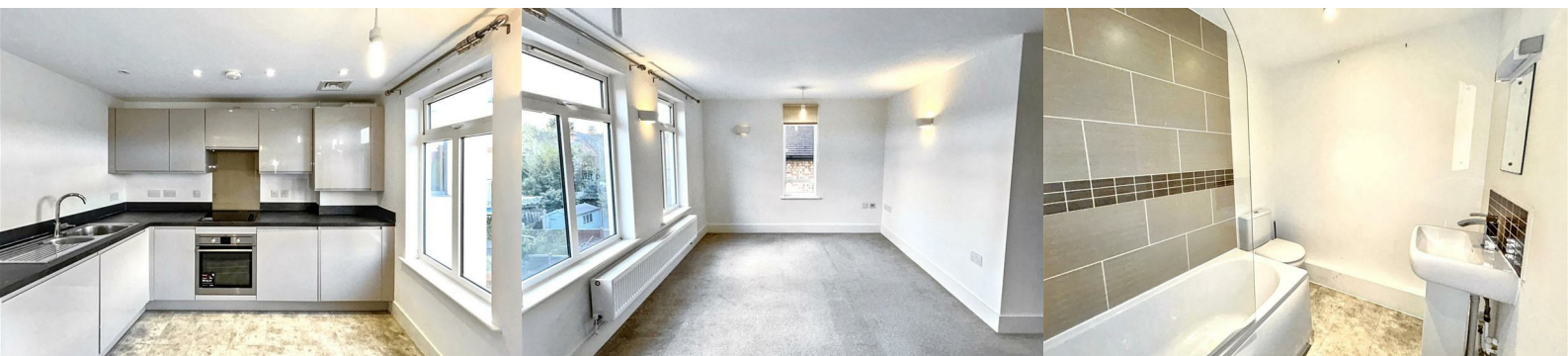


## "PRICE REDUCED"

Elwell Taylor have to offer this modern second floor 1 bedroom apartment for rent. With a large open plan living & dining space leading onto the kitchen with integrated appliances. Benefiting from gas central heating and double glazed windows. As well as being within walking distance to Chelmsford Train Station and the City Center.

Note: No Parking.

Please contact 01245 266088 or email [property@elwelltaylor.co.uk](mailto:property@elwelltaylor.co.uk) if you are interested in booking a viewing.



ENTRANCE

Video entry system, doors leading to all rooms.

LOUNGE/DINING

Open plan living and dining space. Carpet to floor, double glazed window and radiator.

KITCHEN

Selection of wall and base units in grey with integrated washing machine, oven and hob with extractor fan.

BEDROOM

Double sized bedroom with carpet to floor, double glazed window and radiator.

BATHROOM

3 piece suite consisting of WC, basin, bath with shower attachment.

EXTERNAL

No Parking available

INFORMATION

Holding Fee: £229.00

Deposit: £1148.00

Available: immediately - subject to referencing.

Applicants must be able to show an annual income of £30,000 or more.

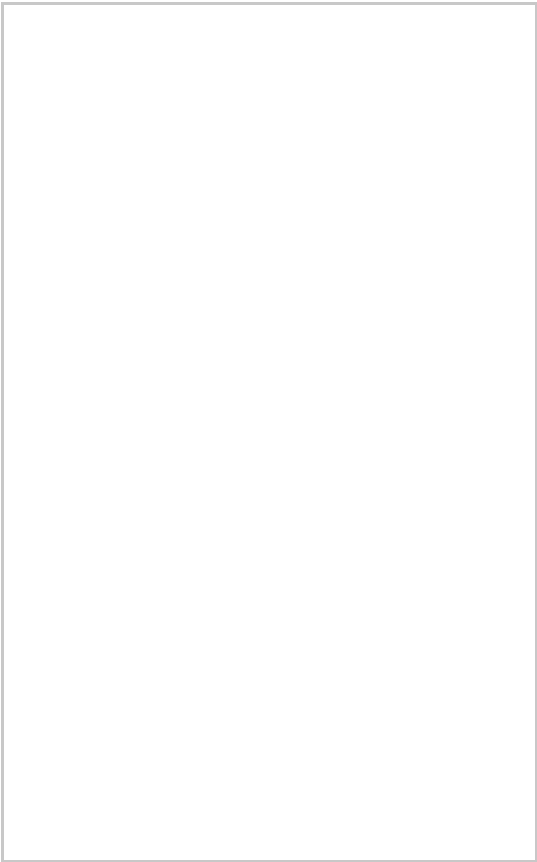
No Smokers.

Pets are not allowed under the head lease of the building.

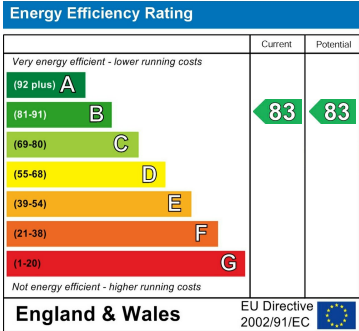
Area Map



Floor Plans



Energy Efficiency Graph



These particulars, whilst believed to be accurate are set out as a general outline only for guidance and do not constitute any part of an offer or contract. Intending purchasers should not rely on them as statements of representation of fact, but must satisfy themselves by inspection or otherwise as to their accuracy. No person in this firms employment has the authority to make or give any representation or warranty in respect of the property.