



5 Douglas Walk

, Chelmsford, CM2 9XQ

£440,000



Link detached 3 bedroom family home being sold with no onward chain and located in a sought after area of Chelmsford. The property offers a ground floor cloakroom, fully fitted kitchen, a lounge/diner, family bathroom with modern white suite, garage & driveway and good size rear garden.



ENTRANCE PORCH

Upvc door, wooden effect flooring, coving, artex effect ceiling, radiator, door to:

CLOAKROOM

Low level w.c, washbasin, radiator, wooden effect flooring, window to front, coving, artex effect ceiling.

LOUNGE 15'8" x 12'9" (4.78 x 3.89)

Door from entrance porch, stairs to first floor, window to front, radiator, electric fire, open plan to:

DINING AREA 9'7" x 7'9" (2.92 x 2.36)

Carpet, radiator, window to side, open plan to kitchen and door to conservatory.

KITCHEN 9'5" x 7'5" (2.87 x 2.26)

Selection of base and eye level units in high gloss white, fitted electric oven and hob, washing machine, fridge/freezer, stainless steel sink and drainer, part tiles walls, vinyl floor, window to rear.

LANDING

Window to side, carpet, loft access and airing cupboard.

BEDROOM 1 10'7" + wardrobes x 9'0" (3.23 + wardrobes x 2.74)

Window to rear, carpet, radiator, wardrobe.

BEDROOM 2 9'6" + wardrobe x 8'4" (2.90 + wardrobe x 2.54)

Carpet, window to front, wardrobe, radiator.

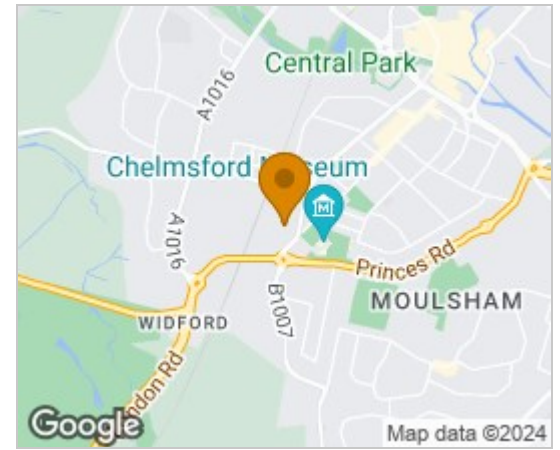
BEDROOM 3 10'8">8'3" x 6'11" (3.25>2.51 x 2.11)

Window to front, carpet, radiator..

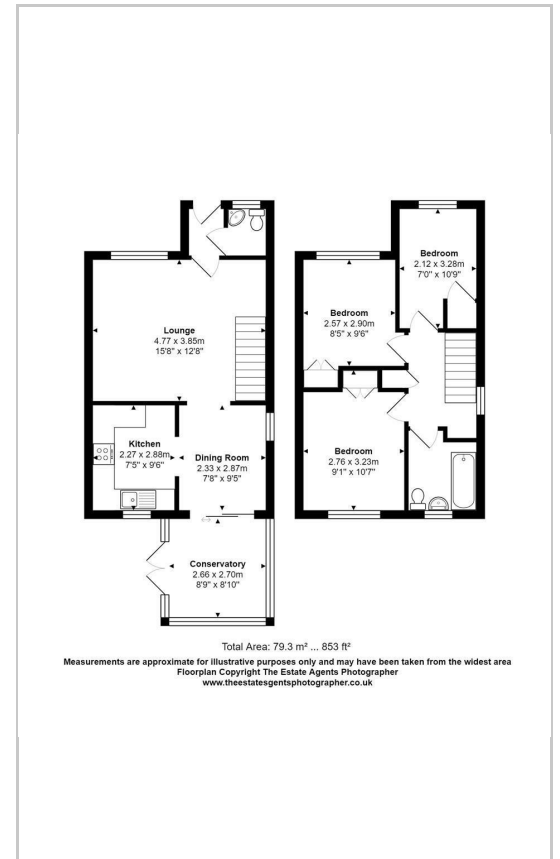
BATHROOM

White suite comprising a panel enclosed bath with shower over and screen, low level w.c, washbasin. Window to rear.

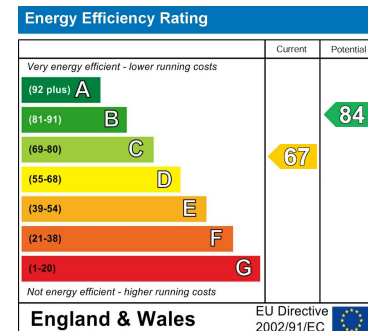
Area Map



Floor Plans



Energy Efficiency Graph



These particulars, whilst believed to be accurate are set out as a general outline only for guidance and do not constitute any part of an offer or contract. Intending purchasers should not rely on them as statements of representation of fact, but must satisfy themselves by inspection or otherwise as to their accuracy. No person in this firm's employment has the authority to make or give any representation or warranty in respect of the property.

38 Rayne Road, Braintree, Essex, CM7 2QP

Tel: 01245 266088 Email: property@elwelltaylor.co.uk <https://www.elwelltaylor.co.uk>