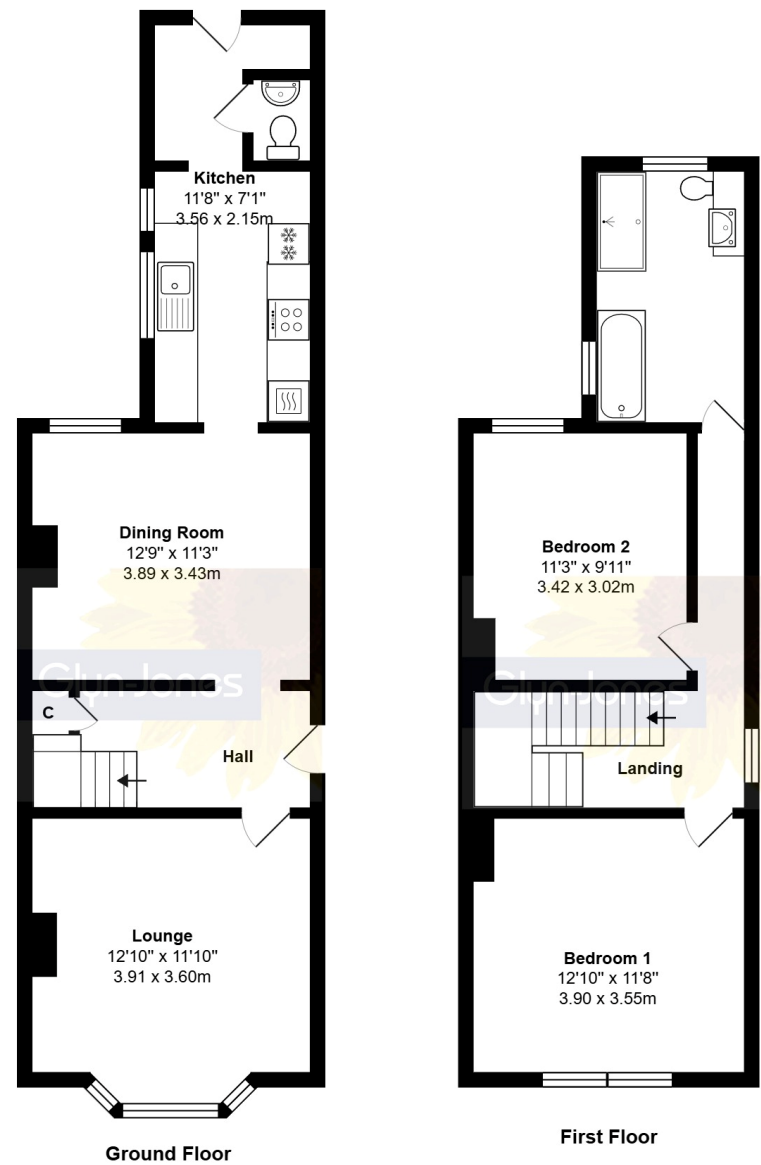


22, Stanhope Road, Littlehampton
West Sussex BN17 6AQ
£320,000 Freehold



Total Area: 989 ft² ... 91.9 m²

Whilst every attempt has been made to ensure the accuracy of the floor plan contained here, measurements are approximate and no responsibility is taken for error, omission or mis-statement.
This plan is for illustrative purposes only and should be used as such by any prospective purchaser.
Created by 1st Image 2025



Presenting this immaculate end terrace, two double bedroom Victorian property in West Sussex, offering spacious accommodation and recently renovated to the highest standards.

Innovatively designed to blend modern living with period features, this property features a landscaped garden, perfect for outdoor gatherings. Ideally located within walking distance of the seafront and local amenities, this property is perfect for several types of purchasers including first-time buyers and investors.

Upon entering, you will find a well-proportioned entrance hall leading to a spacious sitting room with a bay window and a charming period fireplace. The adjacent dining room offers a formal space for entertaining, leading to a contemporary galley kitchen with integrated appliances. The ground floor also features a utility area and cloakroom.

Upstairs, the property boasts two generously proportioned double bedrooms, both featuring high ceilings that create a sense of light and space. The stunning family bathroom is beautifully appointed and includes a separate shower for added convenience.

Outside, the recently landscaped rear garden is a true highlight, complete with raised borders, a charming paved millstone circle, and decorative paving stones set within shingle—perfect for relaxed outdoor entertaining or quiet moments of retreat.

NOTE - For clarification we wish to inform prospective purchasers that we have prepared these sales particulars as a general guide. We have not carried out a detailed survey nor tested the services, appliances and specific fittings. Room sizes should not be relied upon for carpets and furnishings.



22, Stanhope Road, Littlehampton BN17 6AQ
£320,000 Freehold



Littlehampton is a seaside town located on the south coast of England in the county of West Sussex. Situated at the mouth of the River Arun, it is known for its attractive beaches, historic harbour, and traditional seaside charm.

The town offers a mix of leisure, tourism, and maritime activities, with highlights including the award-winning East Beach, the iconic East Beach Café designed by Thomas Heatherwick, and the family-friendly Harbour Park amusement area.

Littlehampton also boasts a scenic riverside, a working marina, and easy access to the South Downs National Park. It is well-connected by road and rail, making it a popular destination for both visitors and residents seeking a coastal lifestyle.



Energy Efficient Rating: D (61)
Council Tax Band: B