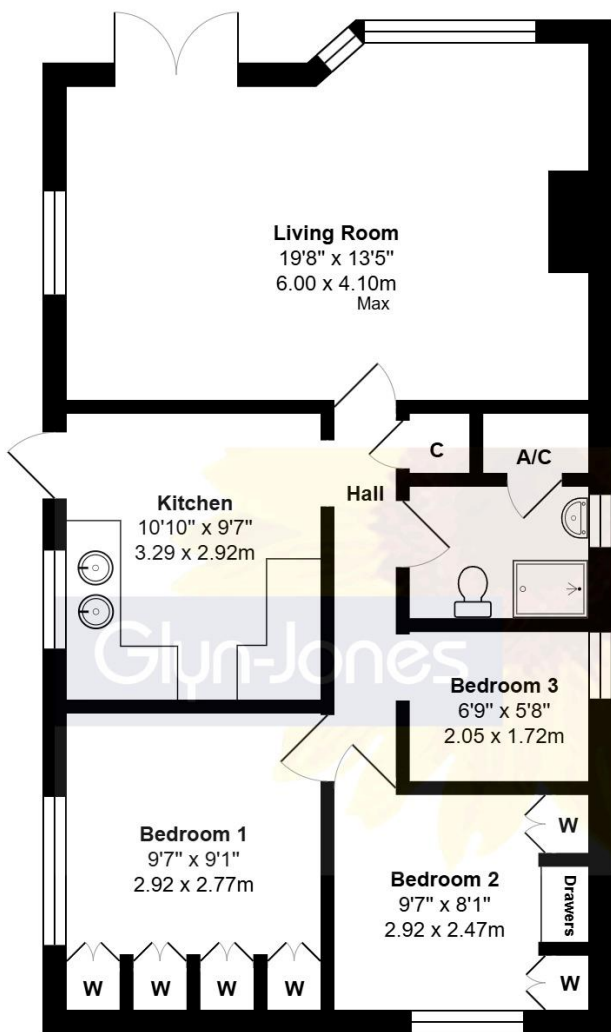


11, Parkside Court, Littlehampton
West Sussex BN17 6BN
£200,000 Leasehold



Total Approx.Floor Area 701 ft² ... 65.2 m²

Whilst every attempt has been made to ensure the accuracy of the floor plan contained here, measurements are approximate and no responsibility is taken for any error, omission or mis-statement.
This plan is for illustrative purposes only and should be used as such by any prospective purchaser.
Prepared by Jtm 2025

NOTE - For clarification we wish to inform prospective purchasers that we have prepared these sales particulars as a general guide. We have not carried out a detailed survey nor tested the services, appliances and specific fittings. Room sizes should not be relied upon for carpets and furnishings.

WITH OVER...



At an Average rating of



Glyn-Jones

Littlehampton Office

01903 739000

littlehampton@glyn-jones.com



Introducing a fantastic opportunity for first-time purchasers to secure a popular purpose-built ground floor apartment in the seaside town of Littlehampton, located in West Sussex. This delightful property boasts two spacious double bedrooms, a modern bathroom, a fitted kitchen with a rear door leading to a small, covered storage space, and a cosy reception room.

Noteworthy features include double glazing, gas central heating, and well-kept communal gardens at the front, with well-stocked borders to the rear of the development. Additionally, the property comes with the added benefit of a garage located in a compound within the development, providing ample parking space.

With a size of 669 sq ft, this ground floor apartment is in good condition throughout and offers a comfortable and stylish living space for those looking to take their first step onto the property ladder.

Situated in close proximity to the coast, residents can enjoy leisurely strolls along the beach or explore the charming seaside town of Littlehampton, with its array of local amenities, shops, restaurants, and recreational facilities.

Don't miss out on this attractive opportunity to view this lovely property firsthand - contact us now to arrange a viewing and secure your place in this sought-after location.



At an Average rating of



Littlehampton Office

01903 739000

www.glyn-jones.com

11, Parkside Court, Littlehampton BN17 6BN
£200,000 Leasehold



Littlehampton is a charming seaside town located on the southern coast of England, in the county of West Sussex. It lies on the eastern bank of the River Arun, where it meets the English Channel. Known for its beautiful beaches, the town attracts both tourists and locals seeking a relaxing coastal retreat.



Tenure: Leasehold – Tenure: Leasehold – We are advised by the vendor that a new lease will be a new 125-year lease granted upon completion. You are advised to have this confirmed by your legal representative at your earliest opportunity.

Maintenance Fee: £1,500 Per Annum

Ground Rent: £100 Per Annum

Energy Efficient Rating: 72 (C)

Council Tax Band: B

WITH
OVER...



COMPANY
REVIEWS

At an Average rating of

4.9/5 ★★★★★



Littlehampton Office
01903 739000
www.glyn-jones.com