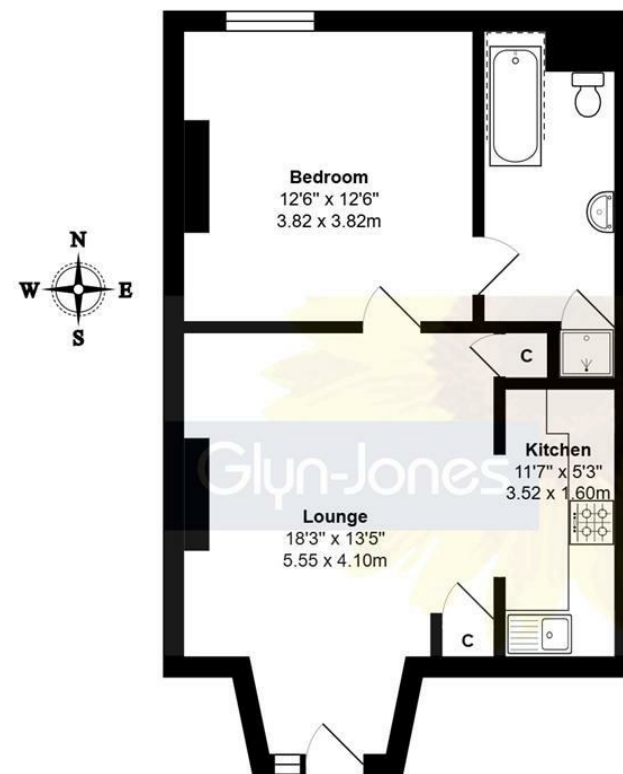


53a South Terrace, Littlehampton BN17 5LE

£167,500 - Leasehold



Lower Ground Floor

Total Approx. Floor Area 531 ft² ... 49.3 m²

Whilst every attempt has been made to ensure the accuracy of the floor plan contained here, measurements are approximate and no responsibility is taken for any error, omission or mis-statement. This plan is for illustrative purposes only and should be used as such by any prospective purchaser. Prepared by Jtm 2025



- Lower Ground Floor Apartment
- South Facing Living Room
- Bathroom with Separate Shower
- Double Glazing
- South Facing Garden
- One Bedroom
- Modern Fitted Kitchen
- Gas Fired Central Heating
- Private Entrance

Lower Ground Floor Apartment | One Bedroom | South Facing Living Room | Modern Fitted Kitchen | Bathroom with Separate Shower | Gas Fired Central Heating | Double Glazing | Private Entrance | South Facing Garden | EER - E

TENURE - Leasehold

Council Tax Band: A

Energy Performance Rating: E

AGENT'S NOTE - For clarification, we wish to inform prospective purchasers that we have prepared these sales particulars as a general guide. We have not carried out a detailed survey nor tested the services, appliances and specific fittings. Room sizes should not be relied upon for carpets and furnishings.

WITH OVER...



At an Average rating of **4.9/5** ★★★★★



Glyn-Jones & Company
Littlehampton Office Sales
01903 739000
littlehampton@glyn-jones.com



At an Average rating of **4.9/5** ★★★★★



Glyn-Jones & Company
Littlehampton
01903 739000

53a South Terrace, Littlehampton, BN17 5LE



Lower Ground Floor Apartment | One Bedroom | South Facing Living Room | Modern Fitted Kitchen | Bathroom with Separate Shower | Gas Fired Central Heating | Double Glazing | Private Entrance | South Facing Garden | EER - E



Lower Ground Floor Apartment | One Bedroom | South Facing Living Room | Modern Fitted Kitchen | Bathroom with Separate Shower | Gas Fired Central Heating | Double Glazing | Private Entrance | South Facing Garden | EER - E

