

Total Approx.Floor Area 495 ft<sup>2</sup> ... 45.9 m<sup>2</sup>

Whilst every attempt has been made to ensure the accuracy of the floor plan contained here, measurements are approximate and no responsibility is taken for any error, omission or mis-statement.  
This plan is for illustrative purposes only and should be used as such by any prospective purchaser.  
Prepared by Jtm 2025



Littlehampton Office  
01903 739000  
littlehampton@glyn-jones.com

NOTE - For clarification we wish to inform prospective purchasers that we have prepared these sales particulars as a general guide. We have not carried out a detailed survey nor tested the services, appliances and specific fittings. Room sizes should not be relied upon for carpets and furnishings.

## 6 Westfield Court Littlehampton BN17 5AQ £75,000 Leasehold

Glyn-Jones



Step into retirement living at its finest with this exquisite first-floor apartment in the sought-after Westfield Court retirement complex, presented by Glyn-Jones Estate Agents.

This well-presented property boasts a split-level entrance hall with ample storage space, a charming west-facing lounge featuring a bay window, a modern kitchen, and a luxurious bathroom. The entire apartment exudes a clean and modern aesthetic, sash windows, and electric heating.

Residents of Westfield Court can enjoy the tranquillity of well-tended communal gardens, a convenient laundry room, and a recently redecorated residents' lounge. With a resident house manager on hand, as well as non-allocated off-road parking, convenience and comfort are truly at your fingertips.

Situated to the east of Littlehampton town centre, Westfield Court offers easy access to the scenic beachfront within mere minutes. A local convenience store is right across the street, and bus routes are just a stone's throw away, providing effortless connections and convenience for day-to-day living.

This retirement complex presents the perfect opportunity for a seamless transition into a peaceful and welcoming community. Don't miss out on the chance to view this excellent one-bedroom apartment in Littlehampton. Book your viewing today and prepare to embrace the retirement lifestyle you deserve. NO FORWARD CHAIN.



At an Average rating of  
4.9/5 ★★★★★

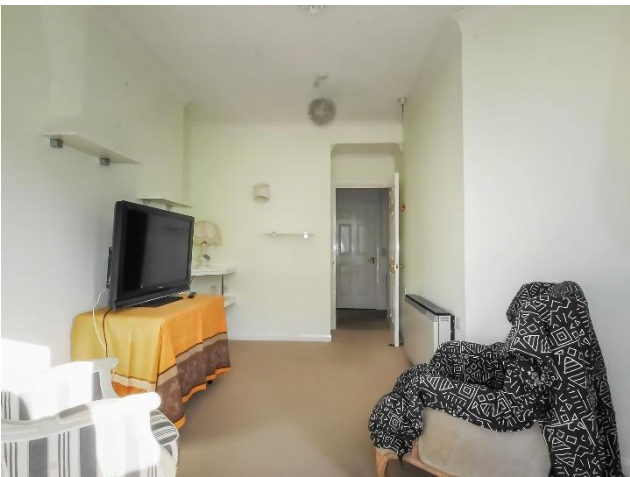


Littlehampton Office  
01903 739000  
www.glyn-jones.com

**6 Westfield Court Littlehampton BN17 5AQ**  
**£75,000 Leasehold**



Littlehampton is a charming seaside town located on the southern coast of England, in the county of West Sussex. It lies on the eastern bank of the River Arun, where it meets the English Channel. Known for its beautiful beaches, the town attracts both tourists and locals seeking a relaxing coastal retreat.



**Council Tax Band – B**

**Energy Efficiency – TBC**

**Tenure: Leasehold – We are advised that there are approximately 65 years remaining on the lease. You are advised to have this confirmed by your legal representative at your earliest opportunity.**

NOTE - For clarification we wish to inform prospective purchasers that we have prepared these sales particulars as a general guide. We have not carried out a detailed survey nor tested the services, appliances and specific fittings. Room sizes should not be relied upon for carpets and furnishings.

WITH  
OVER...



COMPANY  
REVIEWS

At an Average rating of

4.9/5



Littlehampton Office  
01903 739000  
www.glyn-jones.com