

Second Floor

Total Area: 437 ft² ... 40.6 m²

Whilst every attempt has been made to ensure the accuracy of the floor plan contained here, measurements are approximate and no responsibility is taken for error, omission or mis-statement.
This plan is for illustrative purposes only and should be used as such by any prospective purchaser.
Created by Jtm 2025

9 Church House, New Road Littlehampton West Sussex BN17 5AU £150,000 - Leasehold

Glyn-Jones



Are you looking to take your first step onto the property ladder? Look no further than this ideal first-time purchase in Littlehampton, West Sussex! This one-bedroom top floor apartment is perfect for those starting out on their homeownership journey.

Located in a popular area close to the town centre and just a short stroll from the seafront, this purpose-built property offers modern living in a prime location. Step inside to discover a bright and airy space featuring a contemporary shower room, a kitchen breakfast room, and replacement patio doors with a Juliet balcony, letting in plenty of natural light.

With gas central heating, double glazing, and allocated parking space, this apartment has everything you need for comfortable living. Boasting a long lease and in good condition throughout, this property is ready and waiting for its new owners to move right in.

Don't miss out on this fantastic opportunity - arrange a viewing today and take the first step towards owning your own slice of seaside living in Littlehampton.

WITH OVER...



At an Average rating of 4.9/5 ★★★★★

NOTE - For clarification we wish to inform prospective purchasers that we have prepared these sales particulars as a general guide. We have not carried out a detailed survey nor tested the services, appliances and specific fittings. Room sizes should not be relied upon for carpets and furnishings.



Littlehampton Office
01903 739000
littlehampton@glyn-jones.com



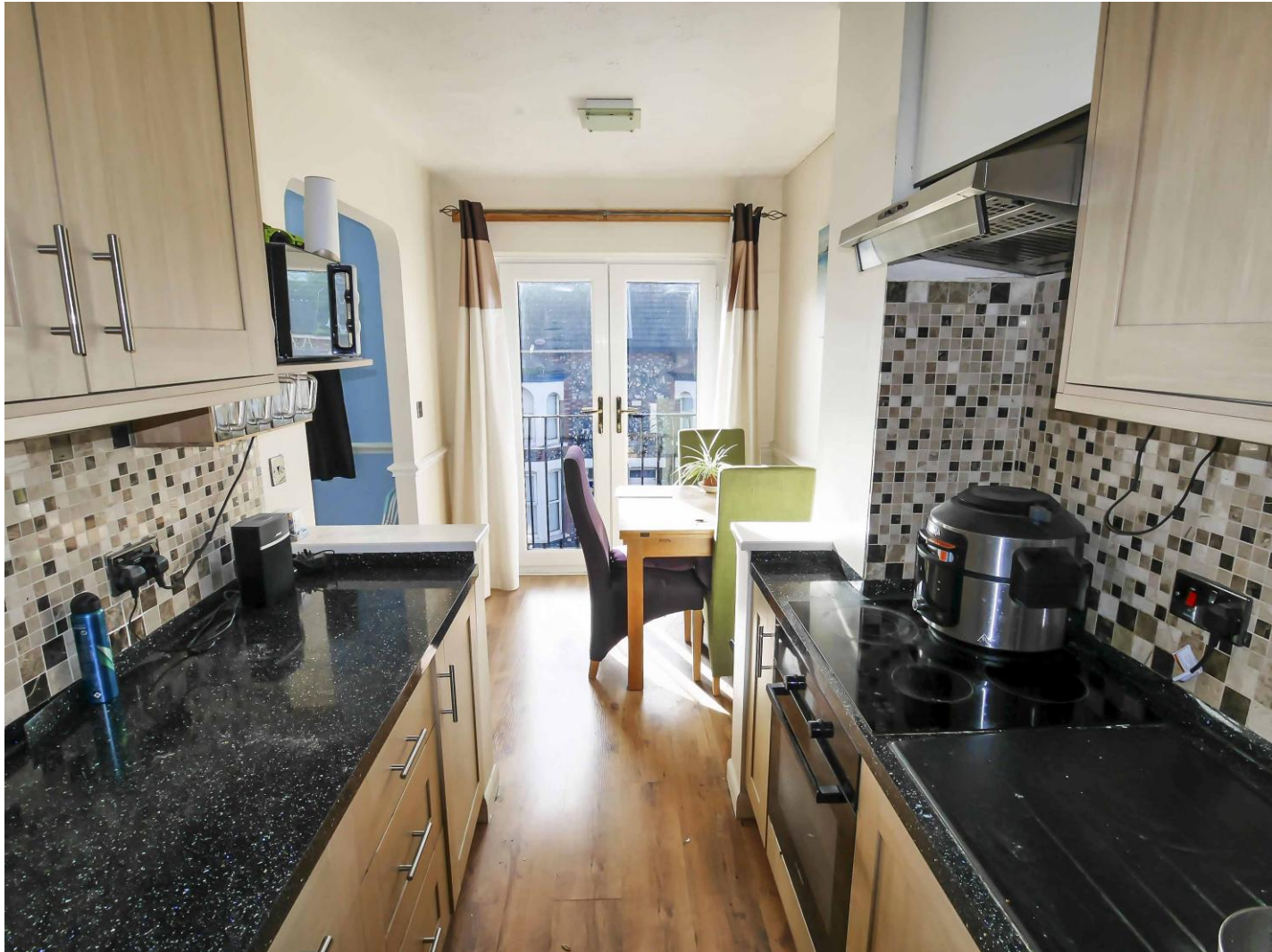
At an Average rating of

4.9/5 ★★★★★



Littlehampton Office
01903 739000
www.glyn-jones.com

9 Church House, Littlehampton BN17 5AU
£150,000 Leasehold



Council Tax Band – A
Energy Efficiency – TBC
Leasehold Information
Tenure: Leasehold – We are advised that there is approximately 113 years remaining on the lease (125 years from 27th September 2013). You are advised to have this confirmed by your legal representative at your earliest opportunity.
Service Charge: £1,220 per annum
Ground Rent £800 per annum
NOTE – For clarification we wish to inform prospective purchasers that we have prepared these sales particulars as a general guide. We have not carried out a detailed survey nor tested the services, appliances and specific fittings. Room sizes should not be relied upon for carpets and furnishings.

Littlehampton is a charming seaside town located on the southern coast of England, in the county of West Sussex. It lies on the eastern bank of the River Arun, where it meets the English Channel. Known for its beautiful beaches, the town attracts both tourists and locals seeking a relaxing coastal retreat.