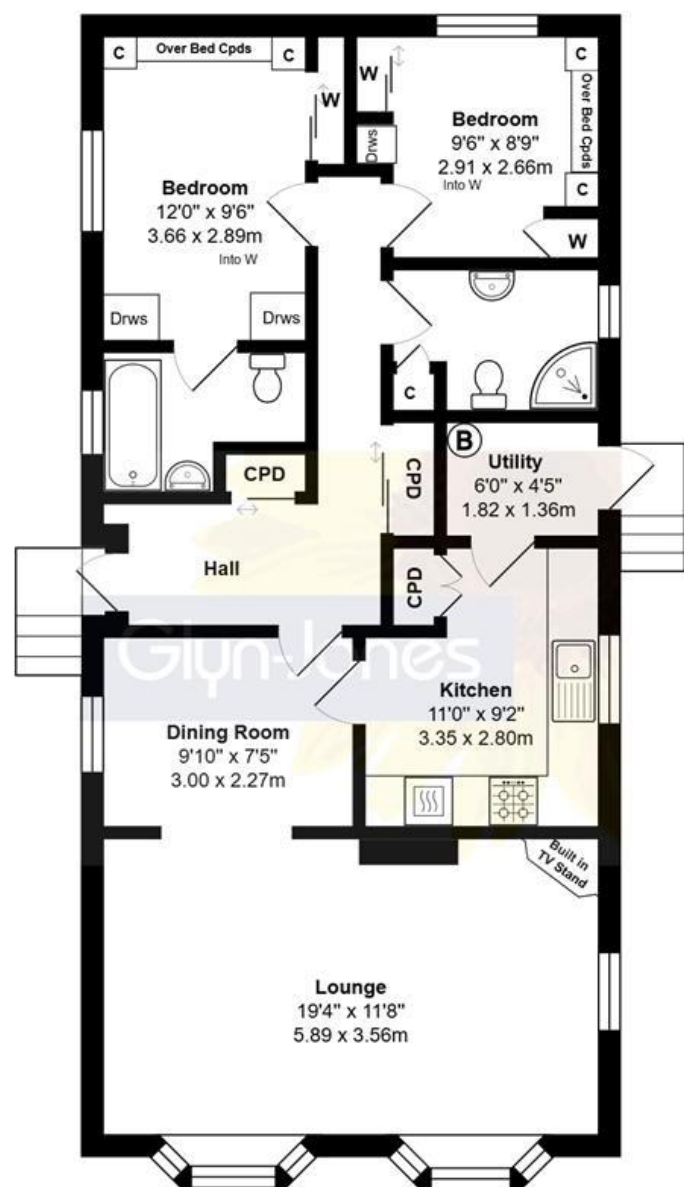


**18 Kingsmead, Thornlea Court,
Littlehampton, West Sussex, BN17 7QS**
£175,000 - Leasehold



Total Area: 858 ft² ... 79.7 m²

Whilst every attempt has been made to ensure the accuracy of the floor plan contained here, measurements are approximate and no responsibility is taken for error, omission or mis-statement.
This plan is for illustrative purposes only and should be used as such by any prospective purchaser.
Created by Jtm 2024



Glyn-Jones and Company are delighted to offer for sale this spacious double unit park home situated on a popular full residential site.

The accommodation comprises; an entrance hall with built-in cupboards, a full width dual aspect lounge, a separate dining area, a fitted kitchen with separate utility room, a shower room and two double bedrooms with built-in storage and an en-suite bathroom to the master. The property could benefit from some cosmetic updating yet does offer double glazing and gas fired central heating.

Externally there are low maintenance full wrap around gardens. There is also a driveway to the side.

NO FORWARD CHAIN.

WITH OVER...



At an Average rating of **4.9/5** ★★★★★

NOTE - For clarification we wish to inform prospective purchasers that we have prepared these sales particulars as a general guide. We have not carried out a detailed survey nor tested the services, appliances and specific fittings. Room sizes should not be relied upon for carpets and furnishings.

Glyn-Jones

Littlehampton Office
01903 739000
littlehampton@glyn-jones.com



At an Average rating of **4.9/5** ★★★★★



Littlehampton Office
01903 739000
www.glyn-jones.com

18 Kingsmead, Thornlea Court, Littlehampton, West Sussex, BN17 7QS
£175,000 - Leasehold



Kingsmead is situated within Thornlea Court, a gated full residential park home site on the outskirts of Littlehampton. The town centre, with its range of shops, banks and eateries can be found within 1.5 miles from the property and is easily accessible by car or bus, with the bus stop located just to the front of the park.

Thornlea Court is an aged restricted park, whose residents must be aged 50 or over.

Agents Note: Pets are permitted, but limited to no more than one dog and/or one cat.



Park Information Occupancy: Full 12 Months
Pitch Fee: £tbc per month (plus an additional £12 per month for drinking water).
Age Restriction: 50 Plus.
Council Tax Band - A
Tenure - Leasehold

We recommend you have this verified by your legal representative at your earliest convenience.



Littlehampton Office
01903 739000
www.glyn-jones.com