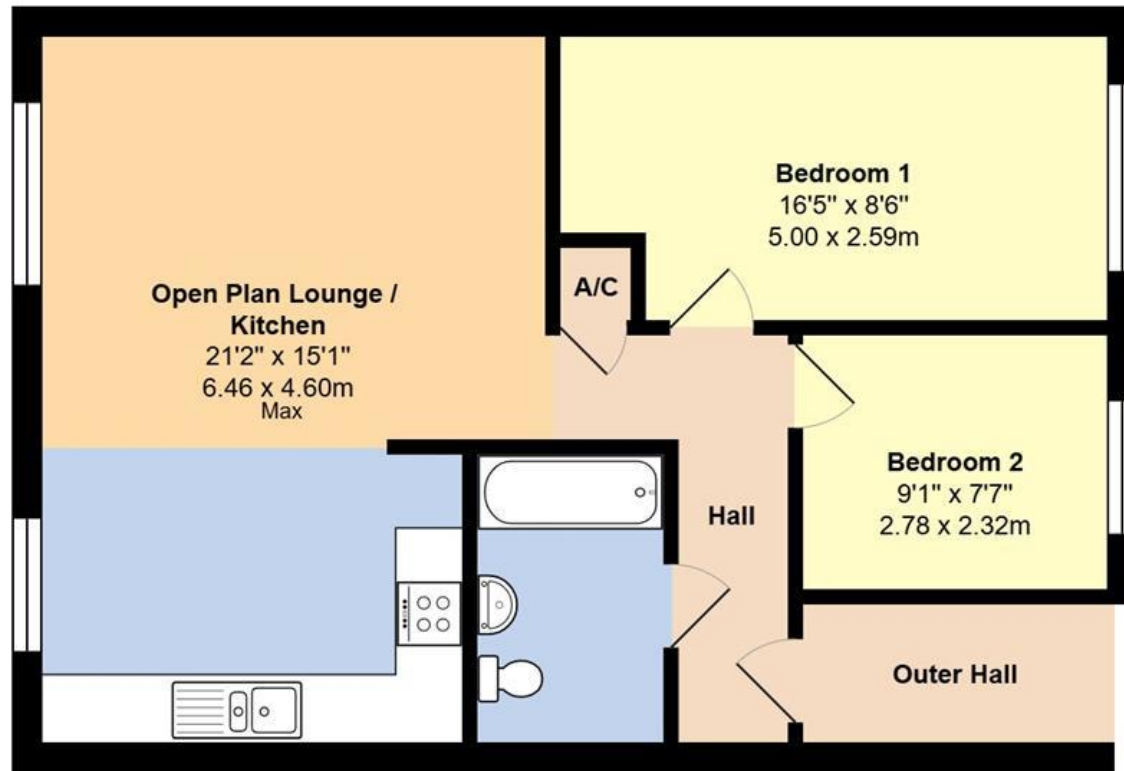




**20 Progress House, Arundel Road**  
**Littlehampton, West Sussex, BN17 7BA**  
**£90,000 (for 50% Share) - Leasehold**

**Glyn-Jones**



**Top Floor**

**Total Area: 614 ft<sup>2</sup> ... 57.0 m<sup>2</sup>**

Whilst every attempt has been made to ensure the accuracy of the floor plan contained here, measurements are approximate and no responsibility is taken for error, omission or mis-statement.  
 This plan is for illustrative purposes only and should be used as such by any prospective purchaser.  
 Created by Jtm 2024



**Glyn-Jones and Company are delighted to offer this rare opportunity to purchase this 50% shared ownership modern apartment.**

The accommodation comprises; an entrance lobby, a hallway, a spacious open plan living room with a kitchen area which has space for a dining table, two bedrooms and a bathroom with shower and skylight.

In our opinion, the property is presented in very good clean decorative order throughout and benefits from gas fired central heating and double glazing.

Residents of Progress House benefit from a communal garden and bike store/storage cupboard.

WITH OVER... **500** COMPANY REVIEWS NOW RECEIVED

At an Average rating of **4.9/5** ★★★★★

**Glyn-Jones**

Littlehampton Office  
 01903 739000  
[littlehampton@glyn-jones.com](mailto:littlehampton@glyn-jones.com)

NOTE - For clarification we wish to inform prospective purchasers that we have prepared these sales particulars as a general guide. We have not carried out a detailed survey nor tested the services, appliances and specific fittings. Room sizes should not be relied upon for carpets and furnishings.

WITH OVER... **500** COMPANY REVIEWS

At an Average rating of **4.9/5** ★★★★★

**Glyn-Jones**

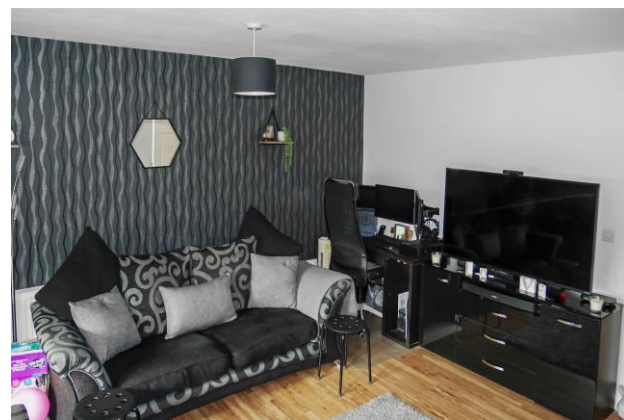
Littlehampton Office  
 01903 739000  
[www.glyn-jones.com](http://www.glyn-jones.com)

**20 Progress House, Arundel Road, Littlehampton, West Sussex, BN17 7BA**  
**£90,000 (for 50% Share) - Leasehold**



Progress House is situated on the corner of Arundel Road and Terminus Road which is situated less than a hundred metres from the town centre. The mainline train station and bus links can be found within very close proximity.

The River Arun and harbour can also be found within half a mile, as well as the footbridge, which takes you towards West Beach. The local shopping parade is within 0.5 miles where local supermarket and post office can be found.



**Property Information**

Tenure: 125 years from 25th March 2008  
Monthly Rent: £304.00 pcm  
Monthly Maintenance: £188.00 pcm  
Council Tax Band - B  
Energy Efficiency Rating - C  
Tenure - Leasehold

We recommend you have this verified by your legal representative at your earliest convenience.

