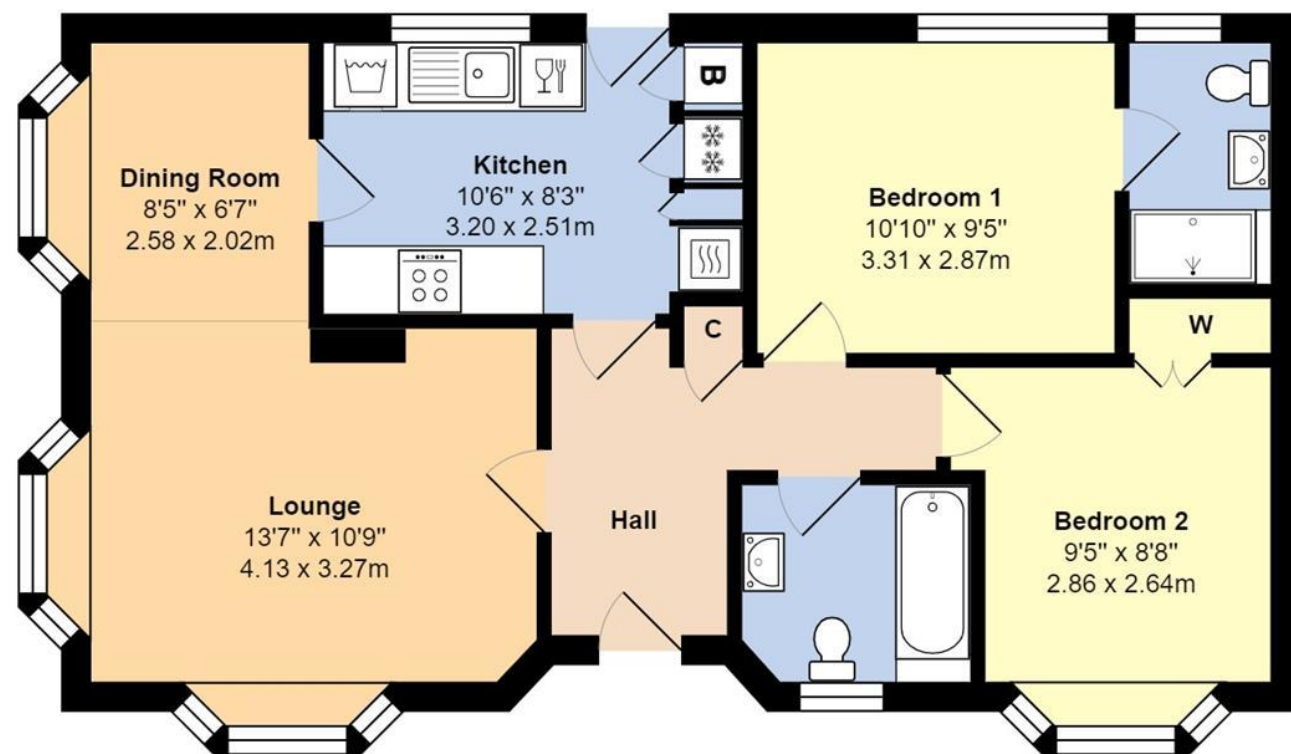


**3 Beechfield Park, Hook Lane
Aldingbourne, West Sussex, PO20 3XX
£224,995 - Leasehold**



Total Area: 711 ft² ... 66.1 m²

Whilst every attempt has been made to ensure the accuracy of the floor plan contained here, measurements are approximate and no responsibility is taken for error, omission or mis-statement.
This plan is for illustrative purposes only and should be used as such by any prospective purchaser.
Created by Jtm 2024

Council Tax Band - A
Tenure - Leasehold

WITH OVER... **500** COMPANY REVIEWS NOW RECEIVED

At an Average rating of **4.9/5** ★★★★★

NOTE - For clarification we wish to inform prospective purchasers that we have prepared these sales particulars as a general guide. We have not carried out a detailed survey nor tested the services, appliances and specific fittings. Room sizes should not be relied upon for carpets and furnishings.

Littlehampton Office
01903 739000
littlehampton@glyn-jones.com



Glyn-Jones and Company are delighted to offer for sale this BRAND NEW 36' x 20' Willerby Hazelwood park home situated on a popular full residential site.

The accommodation comprises; an entrance hall with ample cloaks storage and a recessed cupboard, an L-shaped dual aspect lounge/diner, a fully equipped fitted kitchen with integral appliances, which include a dishwasher, oven, hob, washing machine and fridge/freezer. Further accommodation on offer are a bathroom, two double bedrooms with built-in wardrobes and an en-suite shower room to the master. The property is finished to a high specification throughout and benefits from gas fired central, double glazing and full furnishings to be included.

Externally there is a shingled garden with a power point and water tap as well as a driveway to the side.

NO FORWARD CHAIN.

WITH OVER... **500** COMPANY REVIEWS

At an Average rating of **4.9/5** ★★★★★

Littlehampton Office
01903 739000
www.glyn-jones.com

3 Beechfield Park, Hook Lane, Aldingbourne, West Sussex, PO20 3XX £224,995 - Leasehold



Property information

Site fees (at time of listing): £383.01 per month

Please note that the site fee (also known as pitch fee, or ground rent) is subject to change and reviewed annually. Ground rent can only be increased in line with the Consumer Price Index.

NOTE: The information in this property listing is correct to the best of our knowledge. We recommend any potential purchaser is aware of all details including park rules and conditions before sale completion. We also recommend consulting the Mobile Homes Act 2013 for conditions of any future sale of this property.

We recommend you have this verified by your legal representative at your earliest convenience.

Beechfield Park is located approximately four miles north of Bognor Regis and four miles east of Chichester in Aldingbourne and ideally positioned to enjoy the beautiful area surrounded by beautiful countryside, sandy beaches, fishing villages, historical and family attractions, offering incredible things to do for everyone.

Local amenities

- Aldingbourne tennis club 0.7 miles - Six Villages Sports Centre 1.3 miles - Chichester Cathedral 7 miles - Bognor Beach 4.5 miles - Goodwood House 5.6 miles - Bishop-s Palace Garden 6.9 miles - The Novium Museum 7 miles - Chichester Festival Theatre 6.8 miles.



Littlehampton Office
01903 739000
www.glyn-jones.com