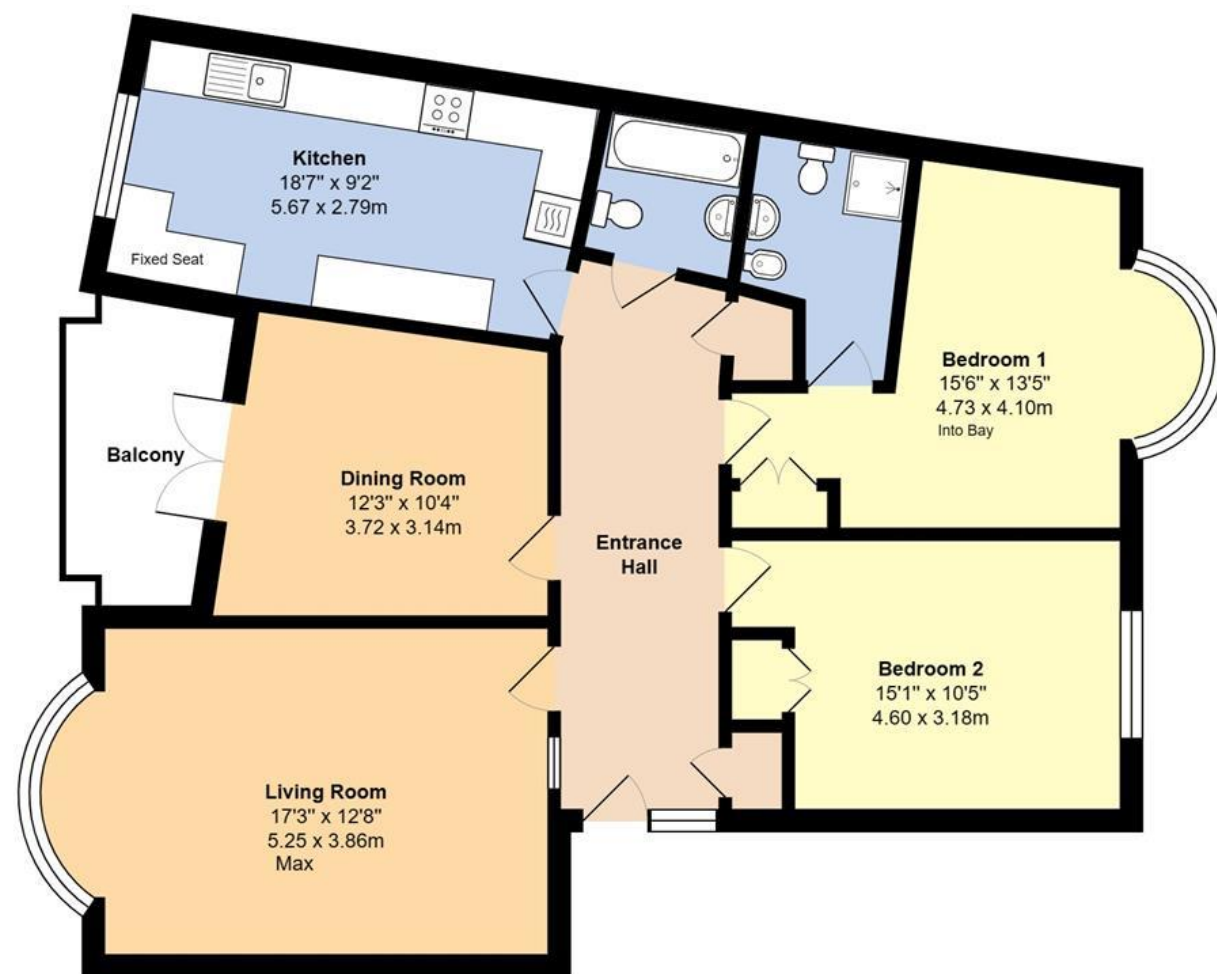


**17 Beach Crescent, Littlehampton
West Sussex, BN17 5NT**

£425,000 - Leasehold



Total Area: 1123 ft² ... 104.4 m² (Excluding Balcony)

Whilst every attempt has been made to ensure the accuracy of the floor plan contained here, measurements are approximate and no responsibility is taken for error, omission or mis-statement.
This plan is for illustrative purposes only and should be used as such by any prospective purchaser.
Created by Jtm 2023

Council Tax Band - E
Energy Efficiency Rating - TBC
Tenure - Leasehold

WITH OVER...



At an Average rating of **4.9/5** ★★★★★

NOTE - For clarification we wish to inform prospective purchasers that we have prepared these sales particulars as a general guide. We have not carried out a detailed survey nor tested the services, appliances and specific fittings. Room sizes should not be relied upon for carpets and furnishings.



Littlehampton Office
01903 739000
littlehampton@glyn-jones.com



Glyn-Jones and Company are delighted to offer for sale this luxury sea front apartment which is situated within the highly desirable Beach Crescent development.

The apartment offers spacious accommodation comprising of a large entrance hall with built in cupboards, a spacious lounge with bay window, an opening through to a dining room, a fitted kitchen, two double bedrooms with the master bedroom benefitting from a four-piece suite en-suite shower room and built in wardrobes, and an additional bathroom.

Furthermore, the property benefits from a private balcony accessed via the dining room, a lift service, extensive communal gardens, a garage, double glazing and gas fired central heating.

No forward chain.



At an Average rating of **4.9/5** ★★★★★



Littlehampton Office
01903 739000
www.glyn-jones.com

17 Beach Crescent, Littlehampton, West Sussex, BN17 5NT

£425,000 - Leasehold



Beach Crescent is situated on the former site of the Beach Hotel. The apartment is located on the first floor of the luxury development built in the late 90's on Littlehampton Seafront.

Residents of Beach Crescent benefit from use of extensive, landscaped communal gardens and ample off road parking.

Littlehampton town centre can be found within half a mile of the property, offering a range of shops and eateries, as well as Littlehampton Train Station, which provides links to London Victoria, Brighton and Portsmouth.



Leasehold Information

Tenure: 99 year lease from 1/6/97, leaving 72 year lease remaining
Ground Rent: £TBC
Maintenance: £TBC

We recommend you have this verified by your legal representative at your earliest convenience.



At an Average rating of 4.9/5



Littlehampton Office
01903 739000
www.glyn-jones.com