

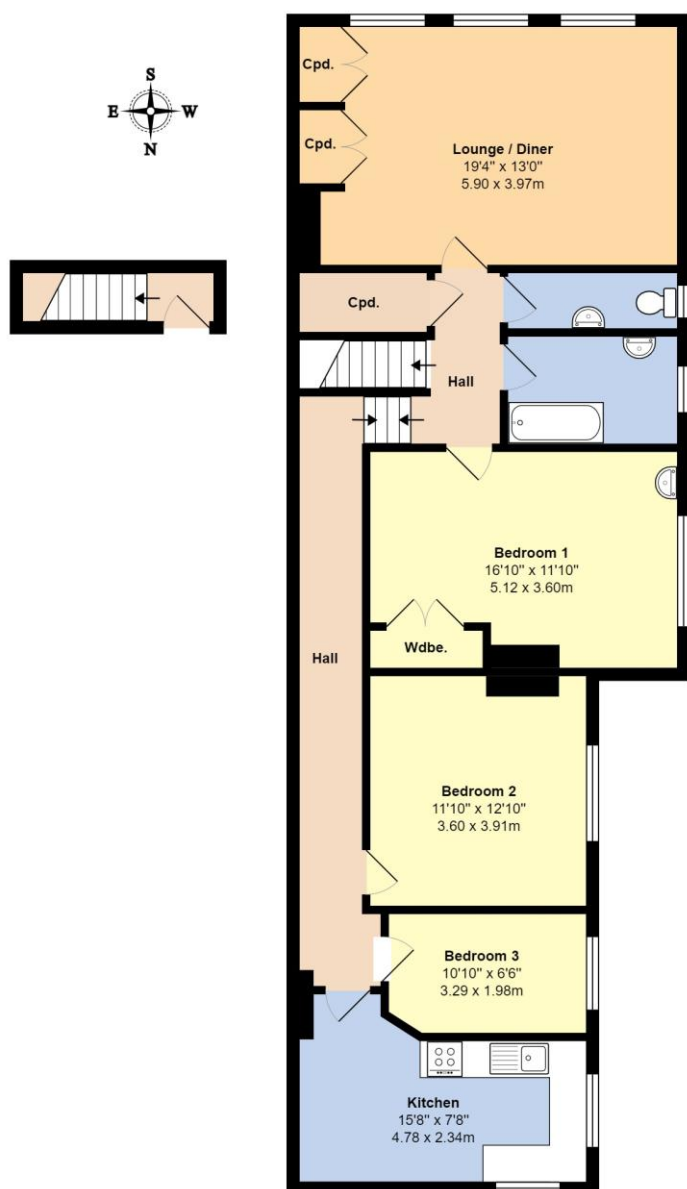


68a South Terrace Littlehampton

£245,000 - Leasehold

Glyn-Jones

Spacious Top Floor Seafront Apartment | Stunning Sea Views | Substantial Accommodation In Excess Of 110sq Metres | Three Bedrooms | Large Lounge / Diner | Gas Central Heating | Double Glazing | Property To Be Sold With New 125 Year Lease Upon Completion | No Forward Chain | EER – C72



Total Area: 1194 ft² ... 110.9 m²

Whilst every attempt has been made to ensure the accuracy of the floor plan contained here, measurements are approximate and no responsibility is taken for error, omission or mis-statement.
This plan is for illustrative purposes only and should be used as such by any prospective purchaser.
Created by Jtm 2021



Littlehampton Office
01903 739000
www.glyn-jones.com



BOGNOR REGIS EAST PRESTON LITTLEHAMPTON RUSTINGTON WEST WORTHING