

KINGFISHER CLOSE

ROWLANDS CASTLE | HAMPSHIRE | PO9 6HG



£325,000
FREEHOLD

- Three Bedroom Terraced Home
- Popular Cul-de-sac Location
- Downstairs Cloakroom
- Garage and Parking
- Two Double Bedrooms
- Living Room With Conservatory

www.fryandkent.com





In Brief

We are delighted to welcome to the market this three bedroom terraced home nestled in a quiet cul-de-sac of Rowlands Castle.

The property is conveniently located close to local amenities and transport links and in brief the accommodation comprises; entrance hallway, downstairs cloakroom, fitted kitchen and spacious living room with double doors opening out to the conservatory.

On the first floor are three bedrooms, two of which are doubles, and the family bathroom.

The fence enclosed rear garden is mainly laid to lawn with a raised patio area to the rear and offers a good degree of privacy.

With a garage and parking space, we highly recommend viewing at your earliest convenience.

£325,000

KEY FACTS

Council Tax Band - D

EPC Rating - C

Approximate Internal Area = 910 Sq Ft



KINGFISHER CLOSE

ROWLANDS CASTLE | HAMPSHIRE | PO9 6HG

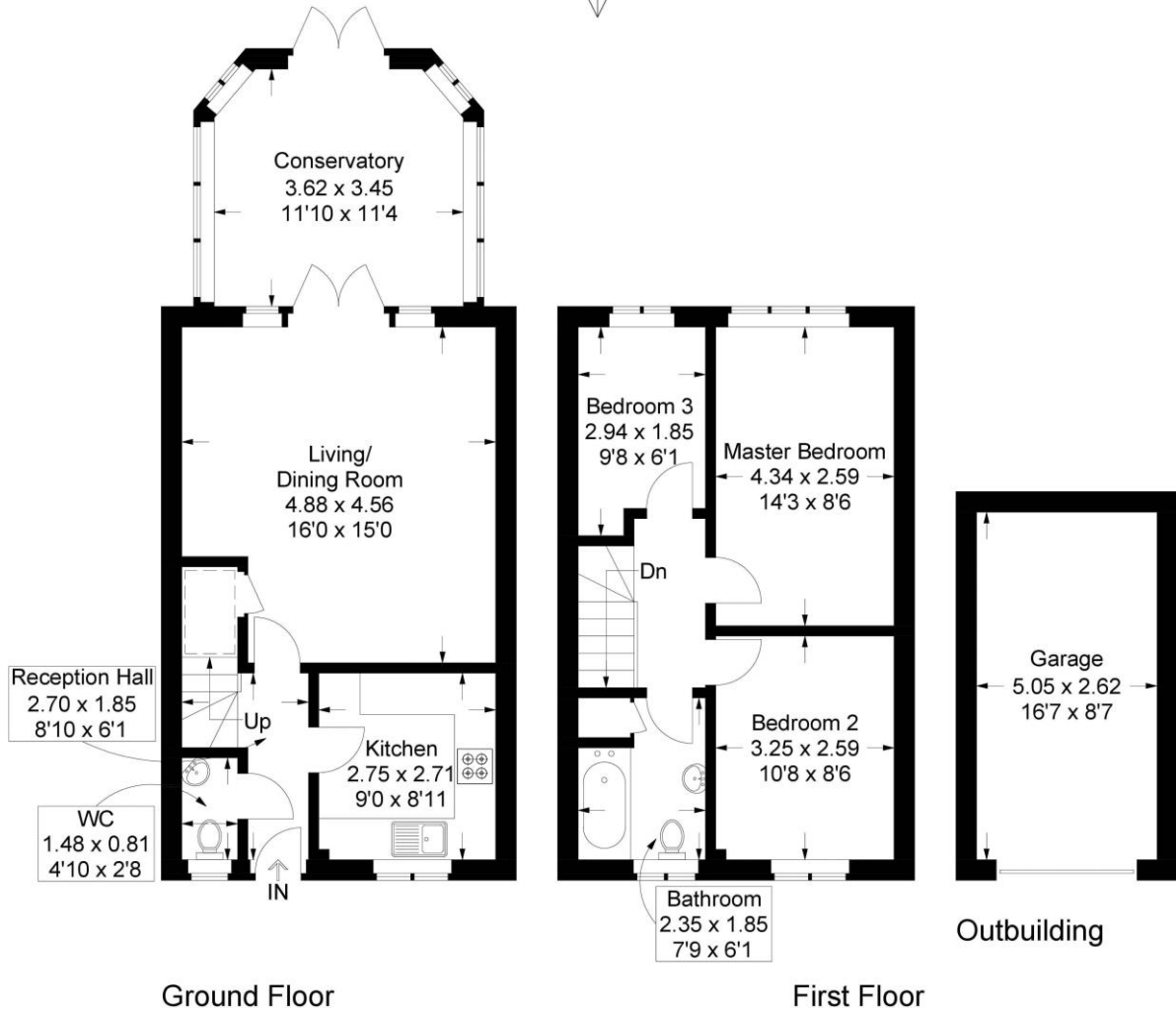


Kingfisher Close, Rowlands Castle

Approximate Gross Internal Area = 84.5 sq m / 910 sq ft

Outbuilding = 13.5 sq m / 145 sq ft

Total = 98 sq m / 1055 sq ft



This plan is for layout guidance only. Not drawn to scale unless stated. Windows and door openings are approximate. Whilst every care is taken in the preparation of this plan, please check all dimensions, shapes and compass bearings before making any decisions reliant upon them.

Southsea
Sales & Lettings
7/9 Stanley Street,
Southsea, PO5 2DS
Tel: 023 9281 5221

Old Portsmouth & Gunwharf Quays
Sales & Lettings
The Seagull, 13 Broad Street,
Old Portsmouth, PO1 2JD
Tel: 023 9281 5221

Drayton & Out of Town
Sales & Lettings
139 Havant Road,
Drayton, PO6 2AA
Tel: 023 9221 0101

London
Sales & Lettings
Mayfair Office, Cashel House,
15 Thayer Street, W1U 3JT
Tel: 0870 112 7099

Southsea
Admin Centre
12 Marmion Road,
Southsea, PO5 2BA
Tel: 023 9282 2300

www.fryandkent.com