

CARRONADE WALK

HILSEA | PORTSMOUTH | PO3 5LX



£200,000
Leasehold

- Two Bedroom First Floor Apartment
- Pleasant Cul-De-Sac Location
- Fitted Kitchen and Spacious Living Room
- Within Proximity to Hilsea Train Station
- No Chain!
- Two Reserved Parking Spaces



In Brief

We are pleased to offer for sale this very well presented first floor two bedroom apartment located in a pleasant cul-de-sac in Hilsea, a short walk from Hilsea Train Station.

The apartment comprises entrance hallway with stairs leading into the living area, fitted kitchen with appliances, two bedrooms with built in wardrobes. the property is double glazed with gas central heating.

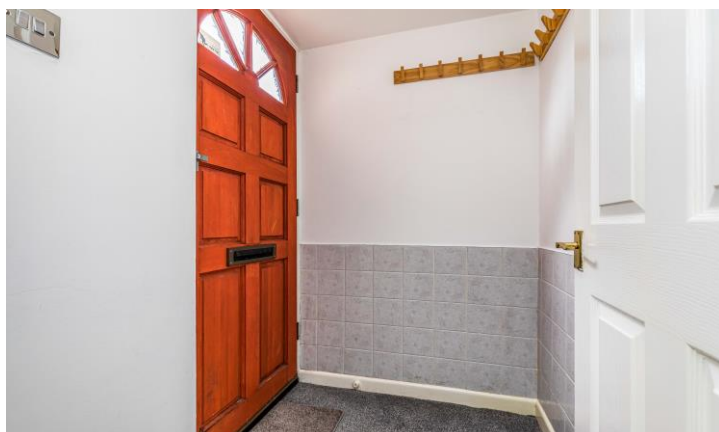
Externally there is allocated parking for two cars.

Offered with no forward chain, we recommend viewing at your earliest convenience.

£200,000

KEY FACTS

Leasehold
84 Years Remaining On Lease
Ground Rent - £80 Per Annum
Council Tax Band - B
EPC Rating - TBC



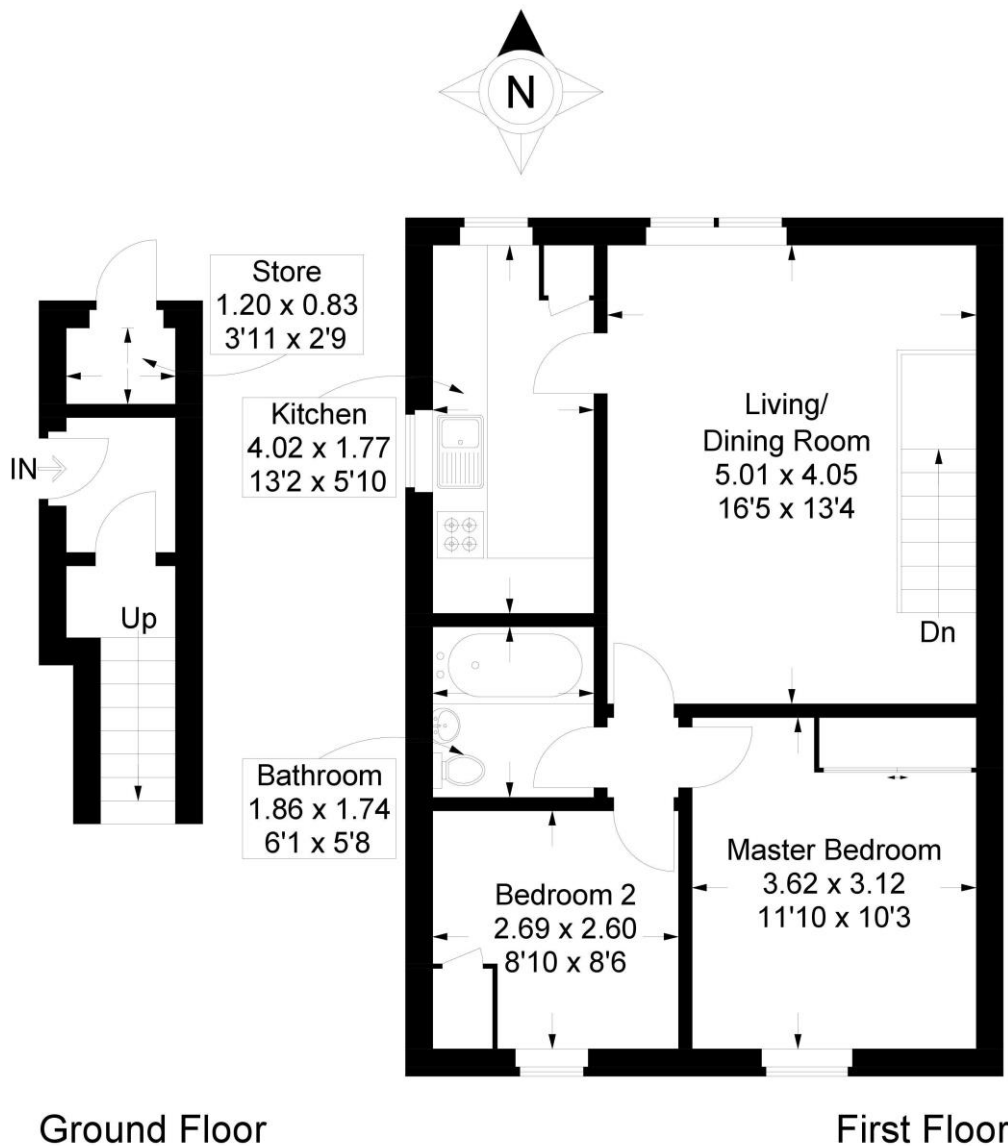
CARRONADE WALK

HILSEA | PORTSMOUTH | PO3 5LX



Carronade Walk, Portsmouth

Approximate Gross Internal Area = 60.6 sq m / 652 sq ft



This plan is for layout guidance only. Not drawn to scale unless stated. Windows and door openings are approximate. Whilst every care is taken in the preparation of this plan, please check all dimensions, shapes and compass bearings before making any decisions reliant upon them.

Southsea
Sales & Lettings
7/9 Stanley Street,
Southsea, PO5 2DS
Tel: 023 9281 5221

Old Portsmouth & Gunwharf Quays
Sales & Lettings
The Seagull, 13 Broad Street,
Old Portsmouth, PO1 2JD
Tel: 023 9281 5221

Drayton & Out of Town
Sales & Lettings
139 Havant Road,
Drayton, PO6 2AA
Tel: 023 9221 0101

London
Sales & Lettings
Mayfair Office, Cashel House,
15 Thayer Street, W1U 3JT
Tel: 0870 112 7099

Southsea
Admin Centre
12 Marmion Road,
Southsea, PO5 2BA
Tel: 023 9282 2300

www.fryandkent.com