

ABERDARE AVENUE

DRAYTON | PORTSMOUTH | PO6 2AU



OFFERS IN EXCESS OF £500,000 FREEHOLD

- 1930's Built Four Bedroom Semi-Detached House
- Excellent Cul-de-Sac Location Close to Shops & Schools
- Extended Layout of over 1,600 sq.ft (149 sq.m)
- Two Main Reception Rooms : Garden Room
- Galley Style Kitchen with Utility Area : Cloakroom
- Lovely Master Bedroom with En-Suite Shower Room
- 50ft x 25ft Easterly Facing Garden : Sea & Harbour Views
- 20ft Attached Garage plus Ample Additional Parking





In Brief

We have pleasure in marketing for sale this **EXTENDED** 1930's semi-detached family home situated in a convenient cul-de-sac setting on the highly **REQUESTED** Welsh Avenues just around the corner from local shops and excellent schooling.

Set well back from the road and providing over 1,600 sq.ft (149sq.m) of accommodation spanning three floors, the layout comprises; reception hall, living room with double doors to a separate dining room, fitted galley style kitchen with additional utility area and door to a double glazed **GARDEN ROOM** and cloakroom.

There are three bedrooms and a family bathroom on the first floor plus stairs leading to the master bedroom with **EN-SUITE** shower room and access to useful eaves storage space. **FINE VIEWS** can also be enjoyed from the upper floors towards Langstone Harbour and Hayling Island.

Externally, there is a large block paved driveway leading to a 19'11 x 7'11 attached garage with rear door to the 50ft (15.2 sq.m) x 25ft (7.6sq.m) **LANDSCAPED** garden with two patios plus an additional patio suitable for hot tub. With the benefit of gas central heating and double glazing throughout, we strongly recommend viewing as soon as possible.

Offers In Excess Of £500,000

KEY FACTS

TENURE: Freehold

EPC RATING: 'D'

COUNCIL TAX BAND: 'D'



ABERDARE AVENUE

DRAYTON | PORTSMOUTH | PO6 2AU



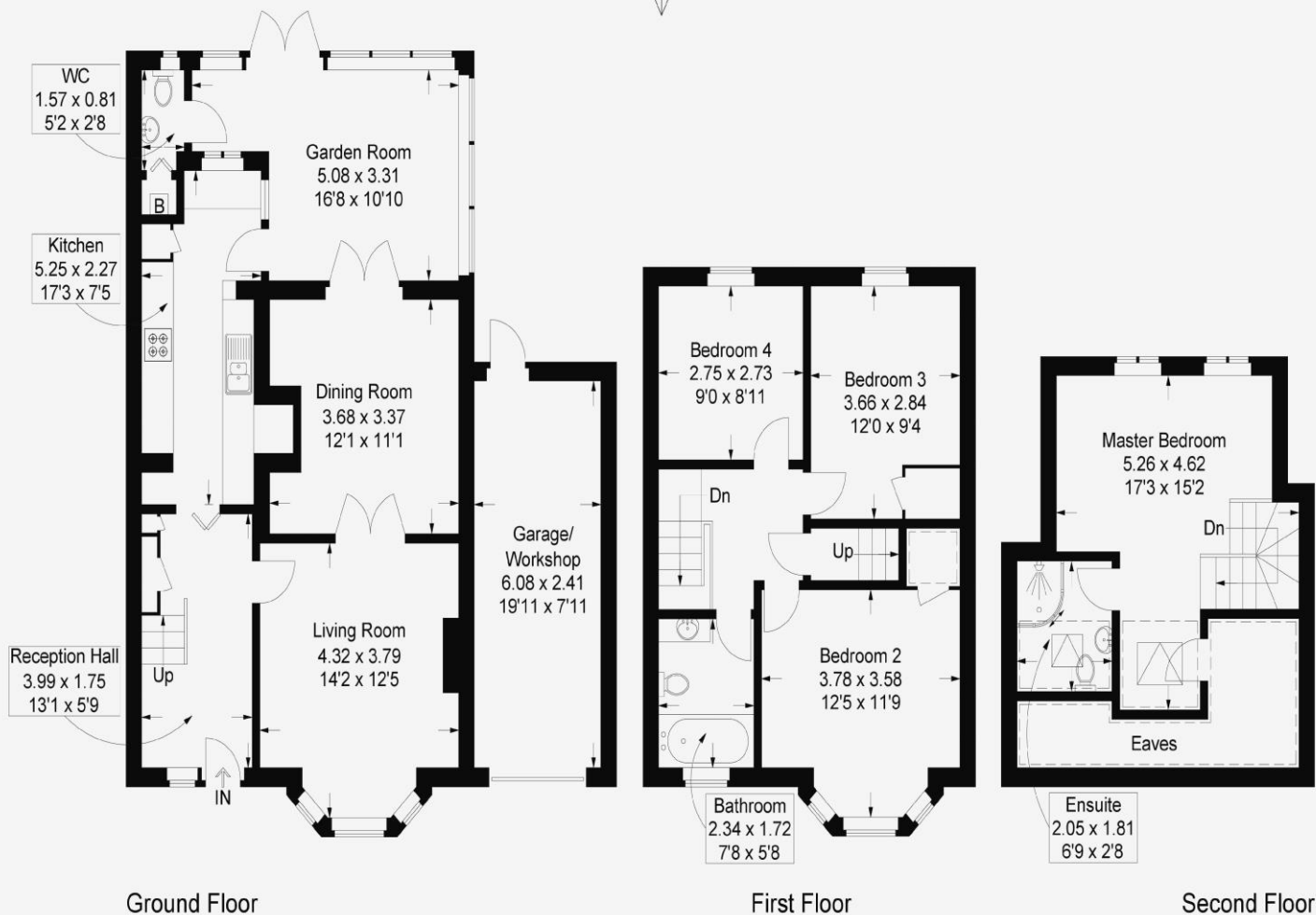
Aberdare Avenue, Portsmouth

Approximate Gross Internal Area = 149 sq m / 1604 sq ft

(Excluding Reduced Headroom / Eaves)

Reduced Headroom = 11 sq m / 118 sq ft

Total = 160 sq m / 1722 sq ft



= Reduced headroom below 1.5m / 5'0"

This plan is for layout guidance only. Not drawn to scale unless stated. Windows and door openings are approximate. Whilst every care is taken in the preparation of this plan, please check all dimensions, shapes and compass bearings before making any decisions reliant upon them.

Southsea
Sales & Lettings
7/9 Stanley Street,
Southsea, PO5 2DS
Tel: 023 9281 5221

Old Portsmouth & Gunwharf Quays
Sales & Lettings
The Seagull, 13 Broad Street,
Old Portsmouth, PO1 2JD
Tel: 023 9281 5221

Drayton & Out of Town
Sales & Lettings
139 Havant Road,
Drayton, PO6 2AA
Tel: 023 9221 0101

London
Sales & Lettings
Mayfair Office, Cashel House,
15 Thayer Street, W1U 3JT
Tel: 0870 112 7099

Southsea
Admin Centre
12 Marmion Road,
Southsea, PO5 2BA
Tel: 023 9282 2300

www.fryandkent.com



The services or appliances, plumbing, heating or electric installations have not been tested by the selling agent so we are unable to confirm that they are in working order. Whilst we endeavour to make our sales details accurate and reliable, they should not be relied upon as statements or representations of fact, and do not constitute any part of an offer contract. The seller does not make or give, nor do we or our employees have the authority to make or give, any representation or warranty in relation to the property.

