

# KHANDALA GARDENS

WATERLOOVILLE | HAMPSHIRE | PO7 5UA



£680,000  
Freehold

- Four Double Bedroom Detached House
- Family Bathroom and Two En-Suites
- Generous Block Paved Driveway
- Large Living Room and Separate Dining Room
- Kitchen/Breakfast Room and Utility Area
- Conservatory and Double Garage
- Westerly Facing Rear Garden Offering Privacy
- Approximate Internal Area = 2655 Sq Ft



## In Brief

This individual detached house is positioned in a corner of a cul-de-sac location within Waterlooville, offering ease of access to the local amenities, transport links, schools and Crookhorn College. This substantial house has accommodation measuring approximately 2655 Sq Ft and comprises; Spacious entrance hallway, ground floor W.C, living room with a bay window to the front elevation, feature fireplace and doors opening to the rear garden, separate dining room, fitted kitchen/breakfast room with access to the conservatory, utility room and access to the double garage. On the first floor with its galleried landing are four double bedrooms with fitted wardrobes and the family bathroom. The master bedroom and bedroom two also benefit from en-suite facilities. On the outside and to the front you have the spacious block paved driveway with space for numerous vehicles and pedestrian access to the rear garden from both sides of the property. The westerly facing, enclosed rear garden offers an excellent degree of privacy and is mainly laid to lawn flanked by mature flower and shrub borders and a patio area that wraps around the rear of the house. We highly recommend viewing to fully appreciate the size of accommodation on offer.

£680,000

### KEY FACTS

Freehold

Council Tax Band - G

EPC - T.B.C

Approximate Internal Area = 2655 Sq Ft



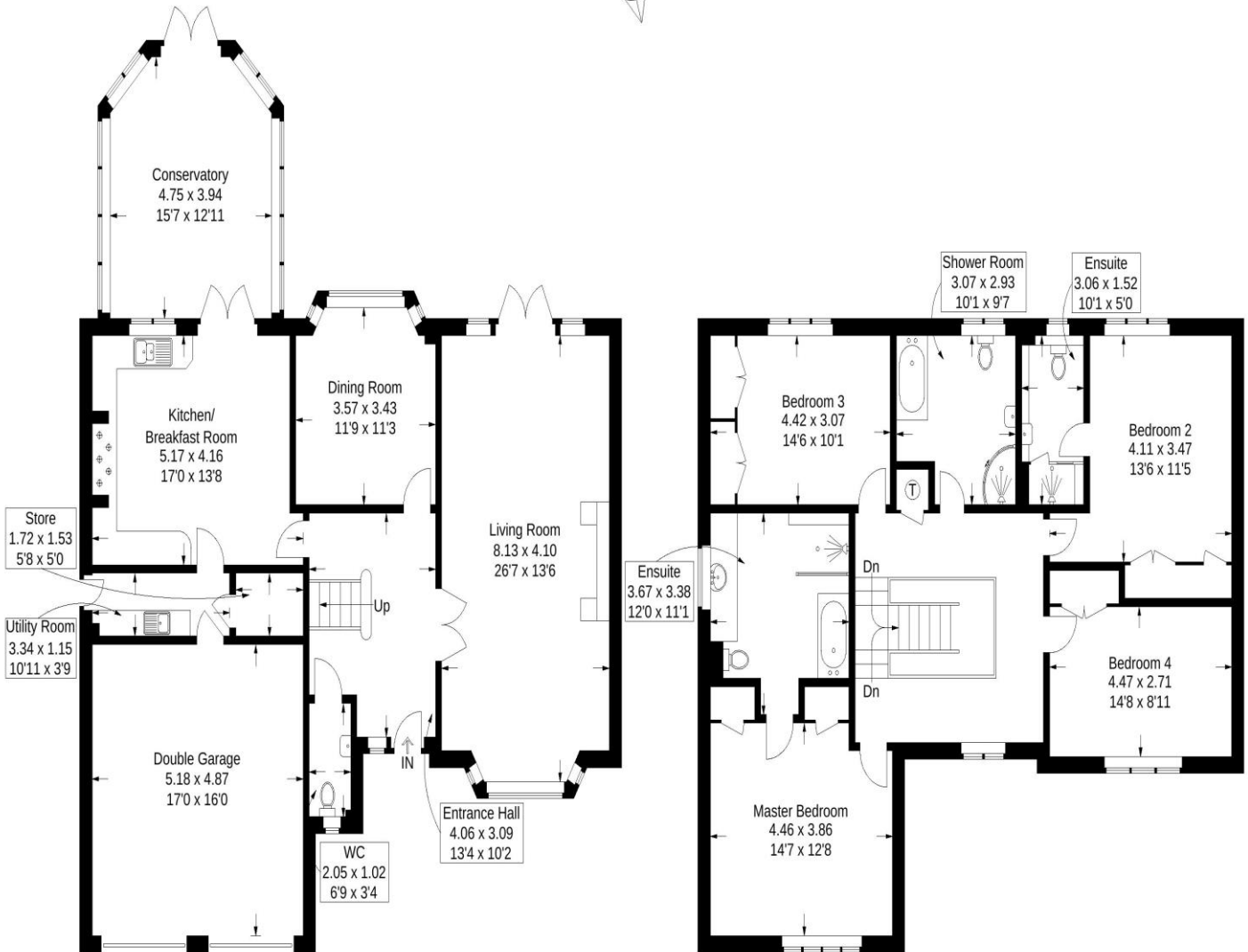
# KHANDALA GARDENS

WATERLOOVILLE | HAMPSHIRE | PO7 5UA



### Khandala Gardens, Purbrook

Approximate Gross Internal Area = 246.6 sq m / 2655 sq ft



Ground Floor

First Floor

This plan is for layout guidance only. Not drawn to scale unless stated. Windows and door openings are approximate. Whilst every care is taken in the preparation of this plan, please check all dimensions, shapes and compass bearings before making any decisions reliant upon them.

**Southsea**  
Sales & Lettings  
7/9 Stanley Street,  
Southsea, PO5 2DS  
Tel: 023 9281 5221

**Old Portsmouth & Gunwharf Quays**  
Sales & Lettings  
The Seagull, 13 Broad Street,  
Old Portsmouth, PO1 2JD  
Tel: 023 9281 5221

**Drayton & Out of Town**  
Sales & Lettings  
139 Havant Road,  
Drayton, PO6 2AA  
Tel: 023 9221 0101

**London**  
Sales & Lettings  
Mayfair Office, Cashel House,  
15 Thayer Street, W1U 3JT  
Tel: 0870 112 7099

**Southsea**  
Admin Centre  
12 Marnion Road,  
Southsea, PO5 2BA  
Tel: 023 9282 2300

[www.fryandkent.com](http://www.fryandkent.com)



The services or appliances, plumbing, heating or electric installations have not been tested by the selling agent so we are unable to confirm that they are in working order. Whilst we endeavour to make our sales details accurate and reliable, they should not be relied upon as statements or representations of fact, and do not constitute any part of an offer contract. The seller does not make or give, nor do we or our employees have the authority to make or give, any representation or warranty in relation to the property.

