

# HAMILTON ROAD

SOUTHSEA | PO5 2LX | PO5 2LX



£750,000  
Freehold

- Link-Detached House within Hamilton Road
- Located within a Popular Road, South of Albert Road
- Five Double Bedrooms, En Suite to Master
- Walking Distance to Shops, Restaurants and Seafront
- Private Rear Garden
- Double Glazing : Gas Central Heating
- Character Features Throughout
- Viewing Advised!





## In Brief

This impressive residence in Hamilton Road, offers a harmonious blend of period charm and modern living. Spread across three floors, the property boasts five bedrooms, with a generous primary bedroom, and spacious rear garden. The entrance hallway sets the tone with its ornate details, including a stained-glass door, intricate wall moldings, and a patterned runner. The living areas showcase the home's character, with the living room featuring wood paneling, a large bay window and a featured fireplace. The dining room exudes elegance with its mint-green walls, chandelier, and high ceilings. The kitchen combines functionality with charm, offering white cabinetry, appliances, and an arched doorway leading to the conservatory/garden room. The bathroom, while compact, makes a statement with its checkerboard floor and sunny yellow accents. Bedrooms are individually styled, ranging from the Oriental-inspired primary bedroom to a cozy attic room with floral wallpaper. Each space is thoughtfully decorated, maintaining the home's overall character. Outdoor living is a highlight, with a delightful deck area featuring potted plants, comfortable seating, and a glass extension that seamlessly connects indoor and outdoor spaces. This property offers a unique combination of spacious living, period features, and modern updates, making it a truly distinctive home in the heart of Southsea.

£750,000

## KEY FACTS

**TENURE:** Freehold

**EPC RATING:** 'E'

**COUNCIL TAX BAND:** 'E'





# HAMILTON ROAD

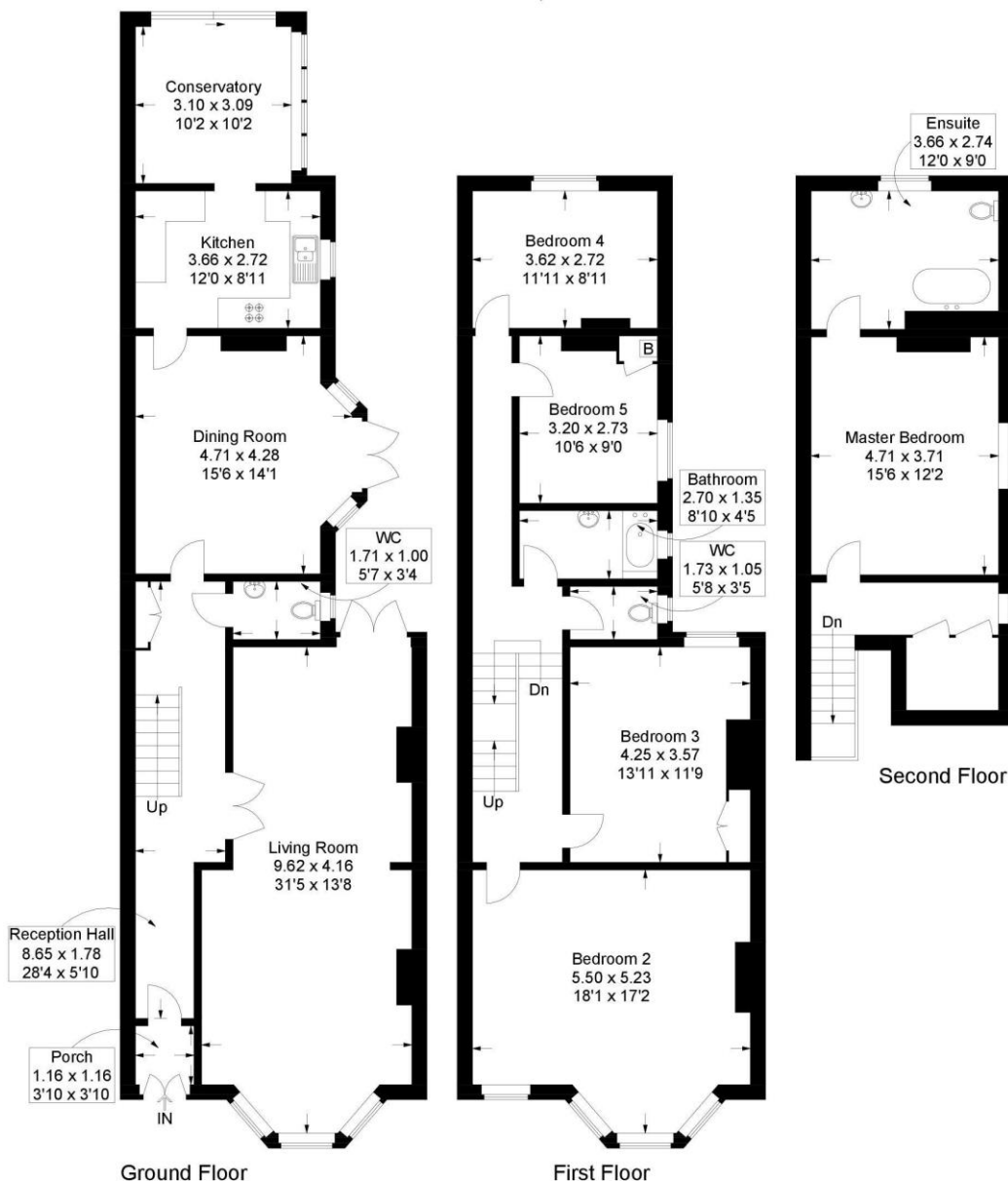
SOUTHSEA | PO5 2LX | PO5 2LX





## Hamilton Road, Southsea

Approximate Gross Internal Area = 215.1 sq m / 2315 sq ft



This plan is for layout guidance only. Not drawn to scale unless stated. Windows and door openings are approximate. Whilst every care is taken in the preparation of this plan, please check all dimensions, shapes and compass bearings before making any decisions reliant upon them.

**Southsea**  
Sales & Lettings  
7/9 Stanley Street,  
Southsea, PO5 2DS  
Tel: 023 9281 5221

**Old Portsmouth & Gunwharf Quays**  
Sales & Lettings  
The Seagull, 13 Broad Street,  
Old Portsmouth, PO1 2JD  
Tel: 023 9281 5221

**Drayton & Out of Town**  
Sales & Lettings  
139 Havant Road,  
Drayton, PO6 2AA  
Tel: 023 9221 0101

**London**  
Sales & Lettings  
Mayfair Office, Cashel House,  
15 Thayer Street, W1U 3JT  
Tel: 0870 112 7099

**Southsea**  
Admin Centre  
12 Marnion Road,  
Southsea, PO5 2BA  
Tel: 023 9282 2300

[www.fryandkent.com](http://www.fryandkent.com)