

DOLPHIN COTTAGE

PENNY STREET | PORTSMOUTH | PO1 2NH



£650,000
Freehold

- An Exceptional Town House within Old Portsmouth
- Walking Distance to Southsea Seafront, Gunwharf Quays
- Renovated Throughout : New Wiring and Plumbing
- Ensuite to the Master : Modern Shower Room
- Bespoke Kitchen with Premium Integrated Appliances
- Two Double Bedrooms with Two Balconies
- Underfloor Heating Throughout : No Forward Chain
- Brand New Double Glazing : Viewing Advised!





In Brief

This four-floor townhouse in Portsmouth boasts a harmonious blend of modern luxury and practical living. The property spans 83.0 m², with each floor offering unique features. The kitchen is a standout, featuring sleek white cabinetry, marble-effect backsplash, and high-end Miele and Siemens appliances. An island with seating adds functionality and style. The primary bedroom, measuring 18.0 m², is a serene retreat with large windows, plush furnishings, and an elegant chandelier. The second bedroom continues the sophisticated theme with blue accents and patterned wallpaper. Both bathrooms exude luxury, one with a freestanding tub and patterned floor tiles, the other with a glass-enclosed shower and navy blue vanity. Throughout the home, warm wood flooring contrasts beautifully with the crisp white walls and ceilings. Strategically placed skylights and large windows flood the space with natural light. The living areas are adorned with statement lighting fixtures and comfortable, stylish furniture. A notable feature is the modern staircase with wooden treads and glass balustrades, connecting all four floors. The property's attention to detail is evident in its high-quality finishes and thoughtful design elements, creating a sophisticated and inviting atmosphere throughout.

£650,000

KEY FACTS

TENURE: Freehold

EPC RATING: Exempt – Grade II Listed

COUNCIL TAX BAND: 'D'



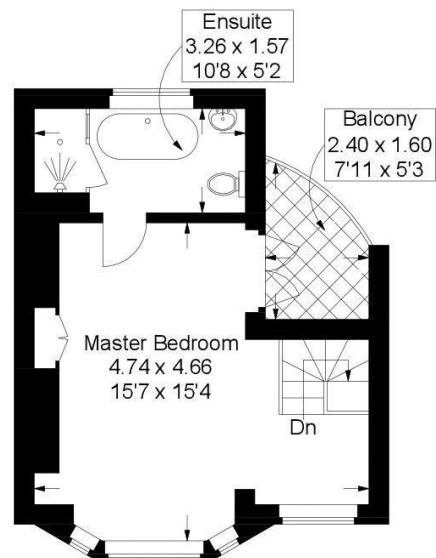
DOLPHIN COTTAGE

PENNY STREET | PORTSMOUTH | PO1 2NH

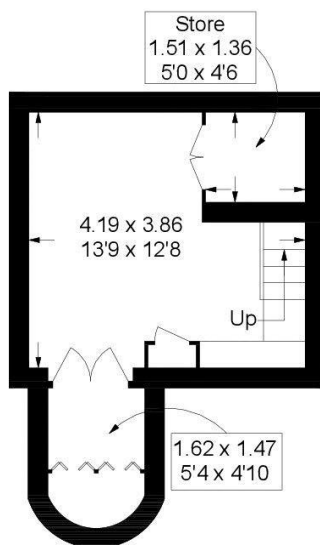


Penny Street, Old Portsmouth

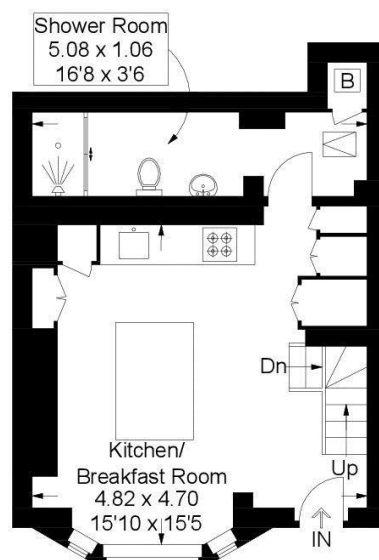
Approximate Gross Internal Area = 102.4 sq m / 1102 sq ft



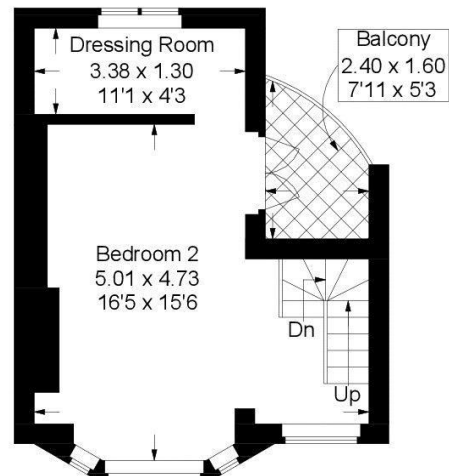
Second Floor



Lower Ground Floor



Ground Floor



First Floor

This plan is for layout guidance only. Not drawn to scale unless stated. Windows and door openings are approximate. Whilst every care is taken in the preparation of this plan, please check all dimensions, shapes and compass bearings before making any decisions reliant upon them.

Southsea
Sales & Lettings
7/9 Stanley Street,
Southsea, PO5 2DS
Tel: 023 9281 5221

Old Portsmouth & Gunwharf Quays
Sales & Lettings
The Seagull, 13 Broad Street,
Old Portsmouth, PO1 2JD
Tel: 023 9281 5221

Drayton & Out of Town
Sales & Lettings
139 Havant Road,
Drayton, PO6 2AA
Tel: 023 9221 0101

London
Sales & Lettings
Mayfair Office, Cashel House,
15 Thayer Street, W1U 3JT
Tel: 0870 112 7099

Southsea
Admin Centre
12 Marmion Road,
Southsea, PO5 2BA
Tel: 023 9282 2300

www.fryandkent.com