

# TUDOR ROSE COURT

SOUTH PARADE | SOUTHSEA | PO4 0DE



£350,000  
Leasehold

- Spacious One Bedroom Sea Facing Apartment
- Highly Requested Five Star Complex
- Balcony with Fabulous Panoramic Sea Views
- Living/Dining Room : Well Equipped Kitchen
- Impressive Bedroom with Walk-In Wardrobe
- Shower Room plus Useful Walk-In Store Room
- Superb Facilities including Bistro & Wellbeing Suite
- No Forward Chain : Viewing Advised!





## In Brief

Step into a world of refined elegance and modern comfort in this exquisite 57 square meter apartment. The spacious living room, bathed in natural light from large windows, sets the tone for a lifestyle of sophistication and ease. Imagine entertaining friends in this versatile space, where carefully curated artwork and chic furnishings create an ambiance of cultured living. The sleek, contemporary kitchen is a culinary enthusiast's dream, featuring high-end appliances and ample counter space for creating gourmet meals. The clean lines and neutral palette provide a canvas for your personal style, while the efficient layout maximizes functionality. Retreat to the tranquil bedroom, a generous 16 square meters of pure comfort. With plush carpeting underfoot and a serene colour scheme, this space promises restful nights and leisurely mornings. The built-in vanity area adds a touch of luxury to your daily routine. The bathroom is a testament to modern design, with a spacious walk-in shower, elegant tiling, and thoughtful accessibility features. Every detail has been considered to create a spa-like experience in your own home. Throughout the apartment, large windows and neutral tones create a sense of openness and possibility. This is more than just a living space; it's an opportunity to elevate your lifestyle. Embrace the art of refined living in this exceptional home.

£350,000

## KEY FACTS

**TENURE:** Leasehold

**TERM:** 996 years remaining

**GROUND RENT:** £510.00 per annum

**SERVICE CHARGE:** approx. £8,000.00 per annum

**EPC RATING:** 'C'

**COUNCIL TAX BAND:** 'B'





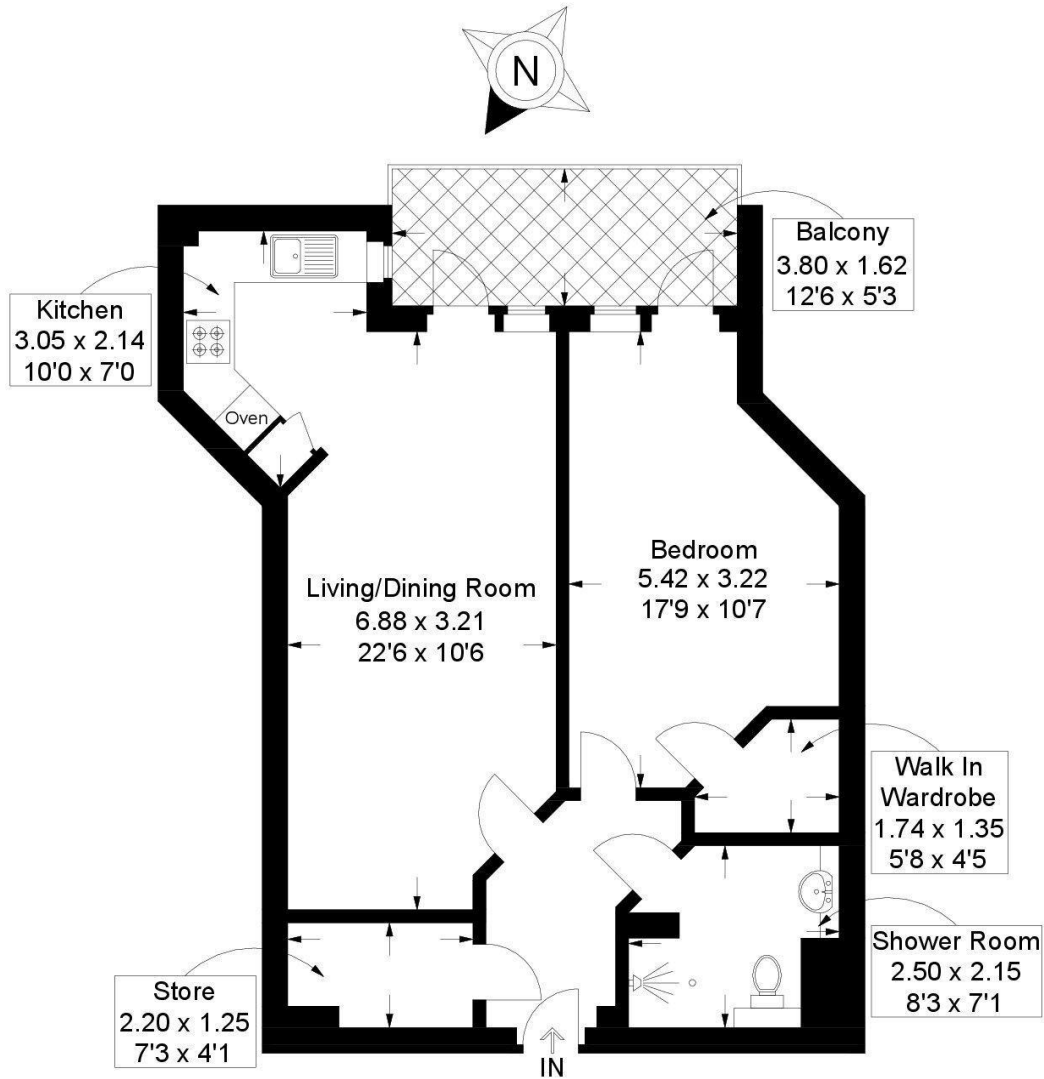
# TUDOR ROSE COURT

SOUTH PARADE | SOUTHSEA | PO4 0DE



## Tudor Rose Court, South Parade, Southsea

Approximate Gross Internal Area = 57.2 sq m / 616 sq ft



### Fourth Floor

This plan is for layout guidance only. Not drawn to scale unless stated. Windows and door openings are approximate. Whilst every care is taken in the preparation of this plan, please check all dimensions, shapes and compass bearings before making any decisions reliant upon them.

Southsea  
Sales & Lettings  
7/9 Stanley Street,  
Southsea, PO5 2DS  
Tel: 023 9281 5221

Old Portsmouth & Gunwharf Quays  
Sales & Lettings  
The Seagull, 13 Broad Street,  
Old Portsmouth, PO1 2JD  
Tel: 023 9281 5221

Drayton & Out of Town  
Sales & Lettings  
139 Havant Road,  
Drayton, PO6 2AA  
Tel: 023 9221 0101

London  
Sales & Lettings  
Mayfair Office, Cashel House,  
15 Thayer Street, W1U 3JT  
Tel: 0870 112 7099

Southsea  
Admin Centre  
12 Marmion Road,  
Southsea, PO5 2BA  
Tel: 023 9282 2300

[www.fryandkent.com](http://www.fryandkent.com)