

NORFOLK STREET

SOUTHSEA | HAMPSHIRE | PO5 4DR



£535,000
Freehold

- An Exceptional Three Bedroom Family Home
- Newly Renovated with Open Plan Living
- Walking Distance to Shops and Trains Stations
- Modern Kitchen with Brand New Integrated Appliances
- Utility Cupboard : Downstairs WC
- Master Bedroom with Spacious Ensuite
- Offered with No Forward Chain
- Viewing Advised!



In Brief

We are delighted to market this newly renovated three bedroom terraced house, located within a popular residential road and being offered with no forward chain. The property is conveniently located within walking distance of Castle Road, Southsea Seafront, and Train Stations, which allows easy access links to London.

The internal accommodation has been tastefully renovated to an exceptional standard and allows buyers to enjoy the modern open plan living, whilst living within a period home. The brand new Kitchen benefits from integral appliances, downstairs WC and double glazed sliding doors to the rear garden, which allows a vast amount of natural sunlight into the property. Upstairs you will find three double bedrooms, with the Master Bedroom benefitting from a brand new spacious ensuite. A utility cupboard and a separate Bathroom can be also found on the first floor.

The property further benefits from brand new double glazing and gas central heating throughout.

Discerning purchasers are strongly recommended to put forward the earliest of enquiries to avoid disappointment.

£535,000

KEY FACTS

TENURE: Freehold

EPC RATING: 'D'

COUNCIL TAX BAND: 'C'



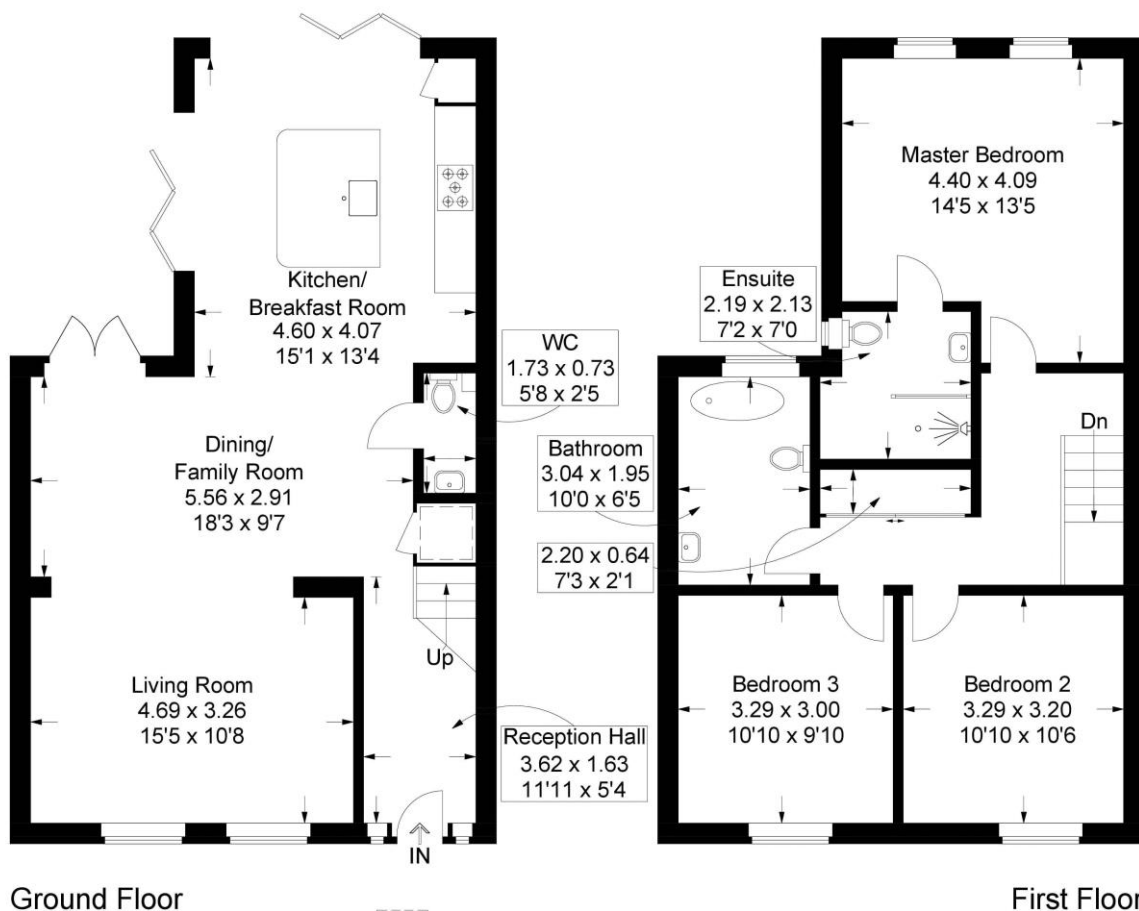
NORFOLK STREET

SOUTHSEA | HAMPSHIRE | PO5 4DR



Norfolk Street, Southsea

Approximate Gross Internal Area = 121.8 sq m / 1311 sq ft
 (Excluding Reduced Headroom / Eaves)
 Reduced Headroom = 0.6 sq m / 6 sq ft
 Total = 122.4 sq m / 1317 sq ft



This plan is for layout guidance only. Not drawn to scale unless stated. Windows and door openings are approximate. Whilst every care is taken in the preparation of this plan, please check all dimensions, shapes and compass bearings before making any decisions reliant upon them.

Southsea
 Sales & Lettings
 7/9 Stanley Street,
 Southsea, PO5 2DS
 Tel: 023 9281 5221

Old Portsmouth & Gunwharf Quays
 Sales & Lettings
 The Seagull, 13 Broad Street,
 Old Portsmouth, PO1 2JD
 Tel: 023 9281 5221

Drayton & Out of Town
 Sales & Lettings
 139 Havant Road,
 Drayton, PO6 2AA
 Tel: 023 9221 0101

London
 Sales & Lettings
 Mayfair Office, Cashel House,
 15 Thayer Street, W1U 3JT
 Tel: 0870 112 7099

Southsea
 Admin Centre
 12 Marnion Road,
 Southsea, PO5 2BA
 Tel: 023 9282 2300

www.fryandkent.com