

# HIGHLAND TERRACE

SOUTHSEA | HAMPSHIRE | PO4 9DE



£292,500

Freehold

- Secluded Two Bedroom Terraced House
- Short Walk to the Seafront and Shops
- Two Good Sized Bedrooms
- Large Front and Rear Garden
- Upstairs Bathrooms : Downstairs Shower Room
- Gas Central Heating Throughout
- Offered with No Forward Chain
- Viewing Advised!



## In Brief

We are delighted to offer to market this perfectly positioned two bedroom house with an additional loft room, which being offered with **NO FORWARD CHAIN**.

The property is conveniently located within walking distance of Palmerston Road, Southsea Seafront and Albert Road, where local restaurants and amenities can be found on your doorstep.

The internal accommodation comprises; Sitting Room with feature fireplace, Dining Room with access to the rear garden, Spacious Kitchen and a downstairs Shower Room. The first floor consists of two good sized bedrooms and a three piece bathroom suite.

The property further benefits from a sizable front and rear garden, which brings added privacy.

Discerning purchasers are strongly recommended to put forward the earliest of enquiries to avoid disappointment.

£292,500

## KEY FACTS

TENURE: Freehold

EPC RATING: 'TBC'

COUNCIL TAX BAND: 'B'



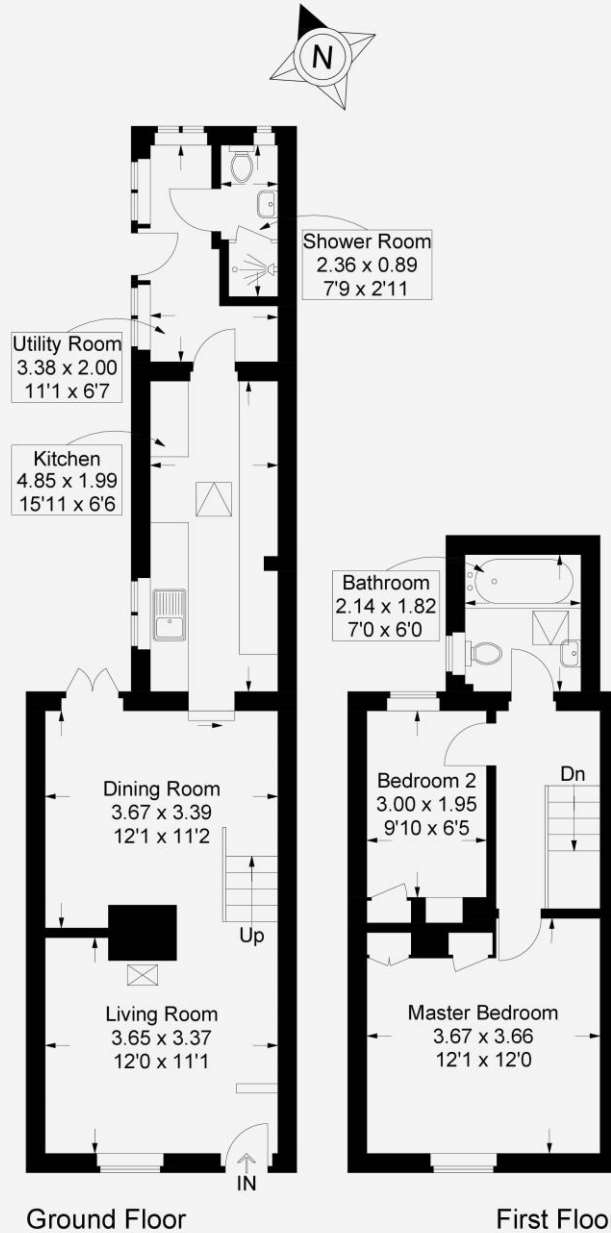
# HIGHLAND TERRACE

SOUTHSEA | HAMPSHIRE | PO4 9DE



## Highland Terrace, Southsea

Approximate Gross Internal Area = 73.1 sq m / 787 sq ft



This plan is for layout guidance only. Not drawn to scale unless stated. Windows and door openings are approximate. Whilst every care is taken in the preparation of this plan, please check all dimensions, shapes and compass bearings before making any decisions reliant upon them.

Southsea  
Sales & Lettings  
7/9 Stanley Street,  
Southsea, PO5 2DS  
Tel: 023 9281 5221

Old Portsmouth & Gunwharf Quays  
Sales & Lettings  
The Seagull, 13 Broad Street,  
Old Portsmouth, PO1 2JD  
Tel: 023 9281 5221

Drayton & Out of Town  
Sales & Lettings  
139 Havant Road,  
Drayton, PO6 2AA  
Tel: 023 9221 0101

London  
Sales & Lettings  
Mayfair Office, Cashel House,  
15 Thayer Street, W1U 3JT  
Tel: 0870 112 7099

Southsea  
Admin Centre  
12 Marmion Road,  
Southsea, PO5 2BA  
Tel: 023 9282 2300

[www.fryandkent.com](http://www.fryandkent.com)