

# 2 BALMORAL COURT, 43

CLARENCE PARADE | SOUTHSEA | PO5 2ES



£239,950  
Leasehold

- Lovely Two Bedroom Ground Floor Apartment
- Fabulous Seafront Location : Private Garage
- Spacious Living Room & Fitted Kitchen
- Two Double Bedrooms both with Fitted
- Modern Bathroom with Over Shower
- Gas Central Heating & Double Glazing
- Direct Access to Communal Gardens & Cycle Store
- No Forward Chain



## In Brief

We have pleasure in marketing for sale this well presented and deceptively **SPACIOUS** ground floor apartment with its own **PRIVATE** entrance situated in a very convenient central Southsea location directly opposite Southsea Common and the **SEAFRONT**. The main shopping facilities are within easy walking distance along with the many cafes, bars and restaurants associated in the **FASHIONABLE** area. Situated to the rear of Balmoral Court with separate gated entrance to the accommodation which comprises; entrance hall, spacious living/dining room, modern fitted kitchen with **INTEGRATED** oven and hob, two double bedrooms both with fitted wardrobes and a modern bathroom with over shower. Externally, the property has direct access onto the communal garden which is laid mainly laid to lawn with paved areas and a large cycle store. Of particular note is a **SEPARATE GARAGE**, unique for properties of this type. Providing gas central heating and double glazing throughout and a long lease, early viewings are highly recommended to avoid disappointment!

£239,950

## KEY FACTS





# 2 BALMORAL COURT, 43

CLARENCE PARADE | SOUTHSEA | PO5 2ES

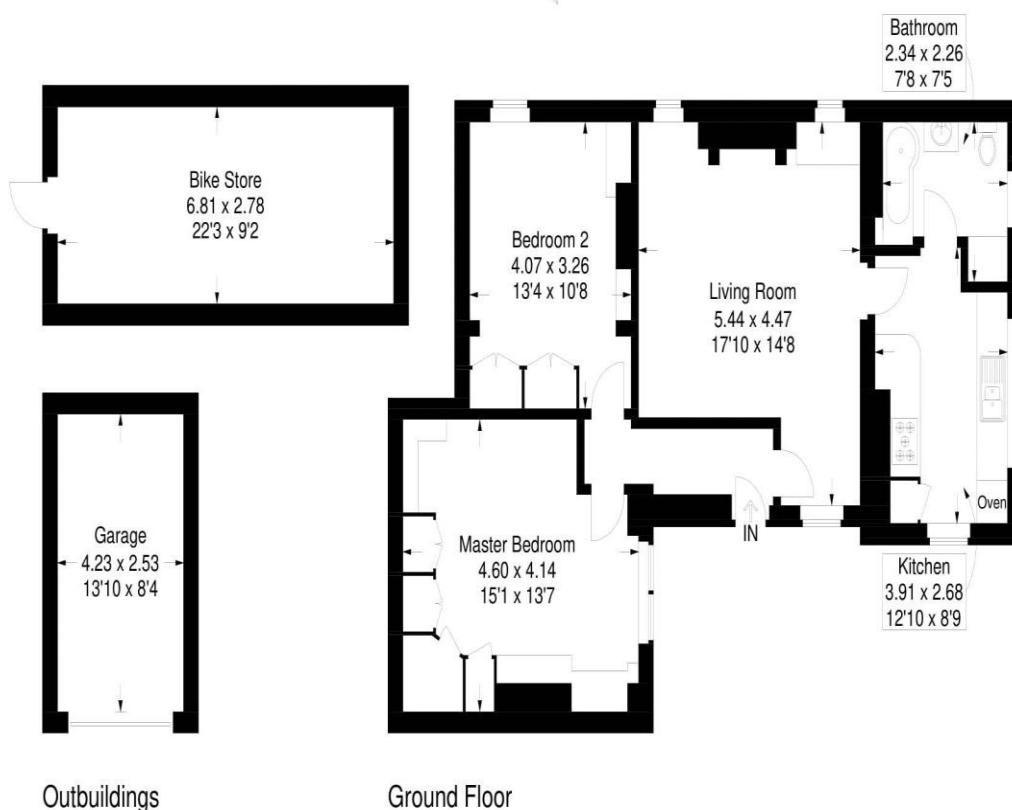


## Balmoral Court, Clarence Parade, Southsea

Approximate Gross Internal Area = 75.3 sq m / 810 sq ft

Outbuildings = 30.2 sq m / 325 sq ft

Total = 105.4 sq m / 1135 sq ft



This plan is for layout guidance only. Not drawn to scale unless stated. Windows and door openings are approximate. Whilst every care is taken in the preparation of this plan, please check all dimensions, shapes and compass bearings before making any decisions reliant upon them.

Southsea  
Sales & Lettings  
7/9 Stanley Street,  
Southsea, PO5 2DS  
Tel: 023 9281 5221

Old Portsmouth & Gunwharf Quays  
Sales & Lettings  
The Seagull, 13 Broad Street,  
Old Portsmouth, PO1 2JD  
Tel: 023 9281 5221

Drayton & Out of Town  
Sales & Lettings  
139 Havant Road,  
Drayton, PO6 2AA  
Tel: 023 9221 0101

London  
Sales & Lettings  
Mayfair Office, Cashel House,  
15 Thayer Street, W1U 3JT  
Tel: 0870 112 7099

Southsea  
Admin Centre  
12 Marmion Road,  
Southsea, PO5 2BA  
Tel: 023 9282 2300

[www.fryandkent.com](http://www.fryandkent.com)