



THE APARTMENT COMPANY®  
20TH ANNIVERSARY

1 Bedrooms  
Apartment  
Located in Bath  
£280,000



[sales@theapartmentcompany.co.uk](mailto:sales@theapartmentcompany.co.uk)

[www.theapartmentcompany.co.uk](http://www.theapartmentcompany.co.uk)

01225 471 144



# Lansdown Villas Camden Row

Bath BA1 5LD



PRICE RANGE £280,000 to £300,000

This well presented and purpose built one bedroom apartment is nestled on the Northern slopes of Bath and enjoys views back towards the city centre. Comprising; a large open plan sitting room and modern kitchen with integrated appliances, good sized bedroom with in-built storage, luxury bathroom and a private terrace. The apartment also boasts an allocated parking space which is a rarity in the city. Being just a short walk to the city centre and close to great transport links to the M4 this purpose built apartment will not disappoint.

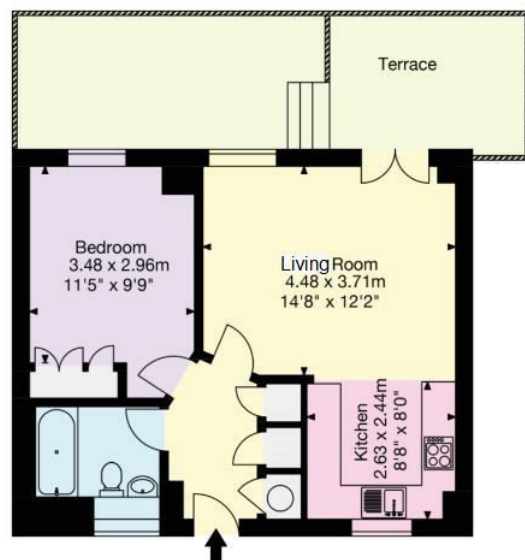
# Lansdown Villas

£280,000

- PRICE RANGE £280,000 to £300,000
- One Bedroom Ground floor
- Luxury Bathroom
- Decked courtyard garden
- Ideal for investor or First time buyer
- Purpose built - Modern
- Spacious & Well maintained
- Double glazed windows
- Allocated parking
- Viewing Highly Recommended



APPROXIMATE GROSS INTERNAL FLOOR AREA  
(No less than)  
46 sq.m (496 sq.ft)



First Floor



THE APARTMENT COMPANY®  
20TH ANNIVERSARY

4 Queen Street  
Bath  
BA1 1HE

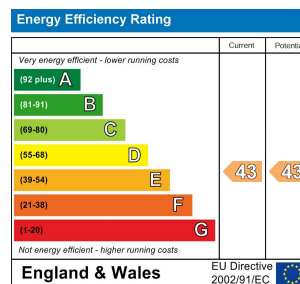
01225 471 144

sales@theapartmentcompany.co.uk

**Council Tax Band: B**

**Local Authority: BANES**

Agents Note: Whilst every care has been taken to prepare these particulars, they are for guidance purposes only. All measurements are approximate and are for general guidance purposes only and whilst every care has been taken to ensure their accuracy, they should not be relied upon and potential buyers/tenants are advised to recheck the measurements.



[www.theapartmentcompany.co.uk](http://www.theapartmentcompany.co.uk)