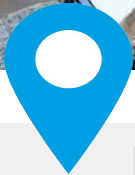




THE APARTMENT COMPANY®
20TH ANNIVERSARY



Beehive Yard, Bath

- Tramshed Development
- Open Plan Living/Kitchen space
- Modern bathroom with shower
- Fully Double Glazed windows
 - EPC rating C
- Ground Floor
- High Quality Fixtures
- Double Bedroom with storage
- Community heating Scheme
- Council Tax Band D





THE APARTMENT COMPANY®
20TH ANNIVERSARY

Offers Over £400,000





THE APARTMENT COMPANY®

20TH ANNIVERSARY

One double bedroom luxury apartment.

A delightful one bedroom ground floor apartment situated in the Tramshed development.

This stunning one bedroom apartment boast beautiful features and an immaculate finish.

It benefits from high ceilings and large picture windows creating a sense of light and space.

With a high quality finish throughout, the open plan living/kitchen space is ideal entertaining space.

The tasteful finish will appeal if you are looking for something very special.

It is centrally located with the city centre on your doorstep and is sure to attract significant interest.

Please contact The Apartment Company to arrange your viewing.

Leasehold 145 years with 122 years remaining

Ground Rent TBA

Service Charge TBA

Council Tax Band D



THE APARTMENT COMPANY®
20TH ANNIVERSARY



OPEN PLAN LIVING SPACE

Delightful open plan floor space with quality fitted kitchen with windows which provide for ample natural light.

DOUBLE BEDROOM

Double bedroom with storage space

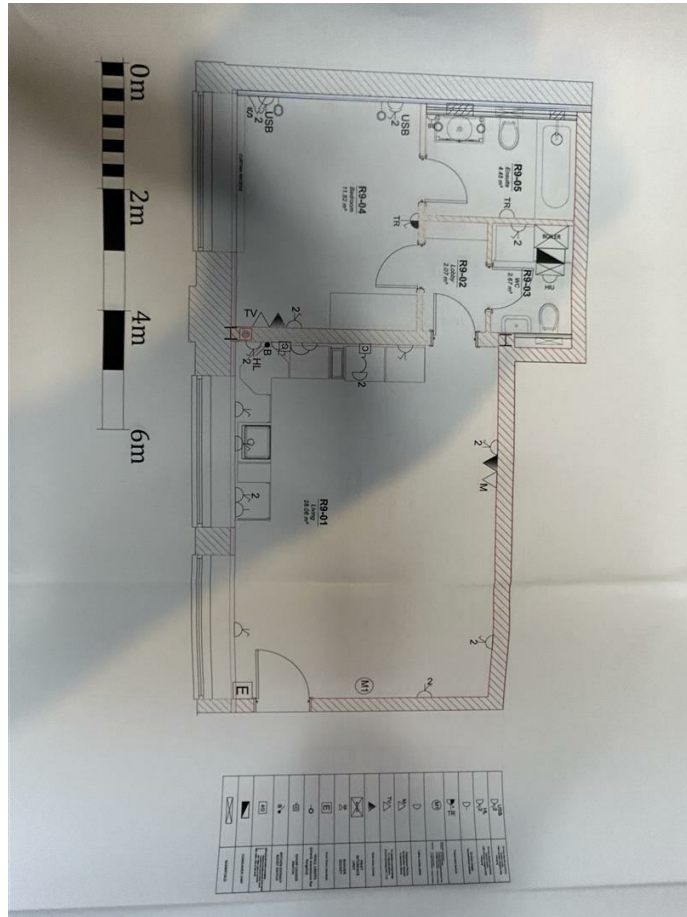
BATHROOM

With dual shower over bath



THE APARTMENT COMPANY®
20TH ANNIVERSARY

Beehive Yard, Bath



Energy Efficiency Rating

	Current	Potential
Very energy efficient - lower running costs		
(92 plus) A		
(81-91) B		
(69-80) C	71	71
(55-68) D		
(39-54) E		
(21-38) F		
(1-20) G		
Not energy efficient - higher running costs		
England & Wales	EU Directive 2002/91/EC	