



THE APARTMENT COMPANY®  
20TH ANNIVERSARY

2 Bedrooms

Apartment

Located in Bath

£400,000



[sales@theapartmentcompany.co.uk](mailto:sales@theapartmentcompany.co.uk)

[www.theapartmentcompany.co.uk](http://www.theapartmentcompany.co.uk)

01225 471 144



# Lansdown Place West

## Bath BA1 5EZ



PRICE RANGE £400,000 to £425,000

This property is a top-floor apartment located in a Georgian Grade II listed town house in popular Lansdown Place West forming part of the Lansdown Crescent.

Spanning over 730 square feet, it boasts stunning views across the city of Bath. Benefitting from two double bedrooms and spacious lounge with plenty of storage in the hallway.

Notably, the apartment is energy-efficient, offering both historical charm and modern sustainability.

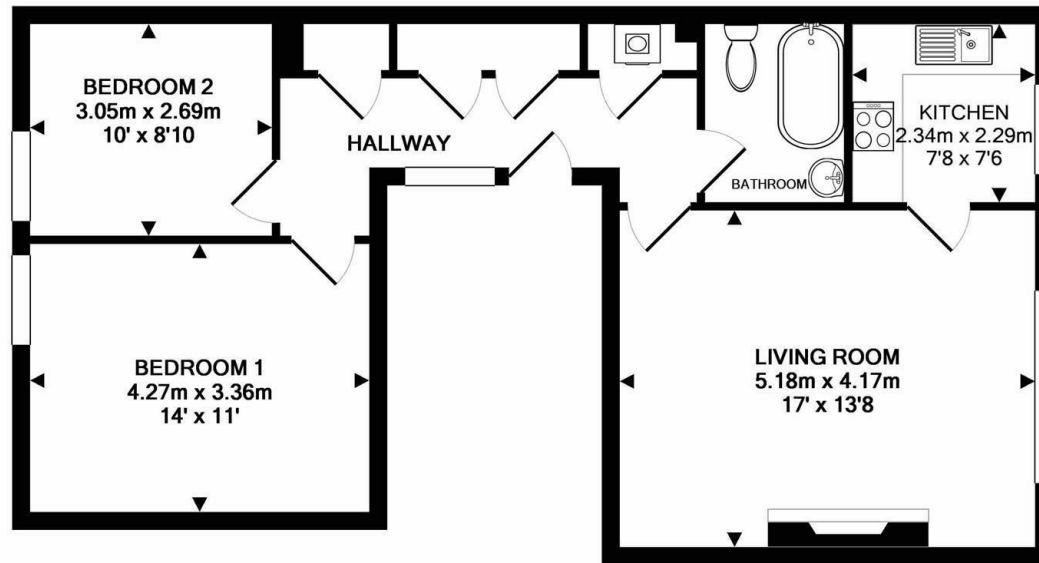
Viewing is highly recommended for this desirable apartment in this sought after location.

# Lansdown Place West

£400,000

- Grade II Listed Georgian Apartment
- Forming part of the Lansdown Crescent
- Two Double bedrooms
- Extensive Hallway with storage
- Stunning Views across Bath
- Offered with No onward Chain
- Spacious Sitting Room
- Service Charge £2,300 per annum
- Lease 957 years remaining
- Ground rent £10 per annum





TOTAL APPROX. FLOOR AREA 68.4 SQ.M. (736 SQ.FT.)

Whilst every attempt has been made to ensure the accuracy of the floor plan contained here, measurements of doors, windows, rooms and any other items are approximate and no responsibility is taken for any error, omission, or mis-statement. This plan is for illustrative purposes only and should be used as such by any prospective purchaser. The services, systems and appliances shown have not been tested and no guarantee as to their operability or efficiency can be given  
Made with Metropix ©2017



THE APARTMENT COMPANY®  
20TH ANNIVERSARY

4 Queen Street  
Bath  
BA1 1HE

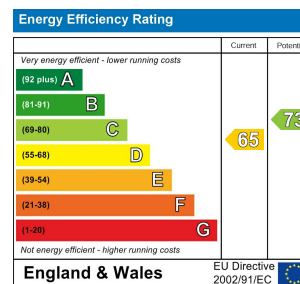
01225 471 144

sales@theapartmentcompany.co.uk

**Council Tax Band: C**

**Local Authority: Bath and North East Somerset**

Agents Note: Whilst every care has been taken to prepare these particulars, they are for guidance purposes only. All measurements are approximate and are for general guidance purposes only and whilst every care has been taken to ensure their accuracy, they should not be relied upon and potential buyers/tenants are advised to recheck the measurements.



www.theapartmentcompany.co.uk