



THE APARTMENT COMPANY®
20TH ANNIVERSARY

1 Bedrooms

Apartment

Located in Bath

Price Guide
£279,000



sales@theapartmentcompany.co.uk

www.theapartmentcompany.co.uk

01225 471 144



Kensington Place

Bath BA1 6AP



PRICE RANGE £279,000 to £300,000

An elegant Georgian apartment nestled in the heart of Bath, offering a blend of historical charm and contemporary comfort. Upon entering, you are greeted by a sense of sophistication and character that is characteristic of Georgian architecture.

Situated on the first floor, this one-bedroom residence boasts captivating bay sash windows that flood the space with natural light and frame breath-taking views of the surrounding landscape.

The property comes to market with the added benefit of no onward chain, streamlining the buying process. Competitively priced, this apartment offers a unique opportunity to own a piece of Bath's historic charm with the convenience of contemporary living. Don't miss the chance to call this enchanting property home.

Kensington Place

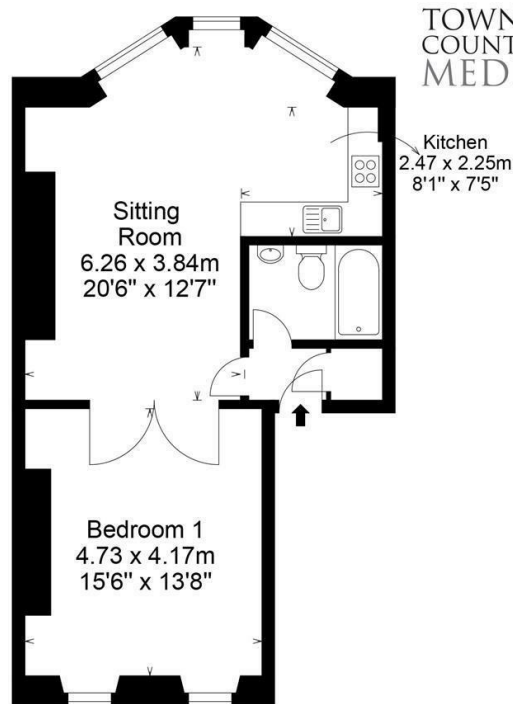
Price Guide £279,000



- PRICE RANGE £279,000 TO £300,000
- Grade II Listed
- Access to Local Amenities
- Bathroom with shower over
- Permit Parking
- Open Plan Living room with feature bay
- Bright and airy with Stunning Views
- One Double Bedroom
- Share of Freehold
- No onward Chain



1st Floor Apartment
 12 Kensington Place,
 Bath, BA1 6AP
 Approx. Gross Internal Area
 593 Sq Ft - 55.16 Sq M



TOWN &
 COUNTRY
 MEDIA

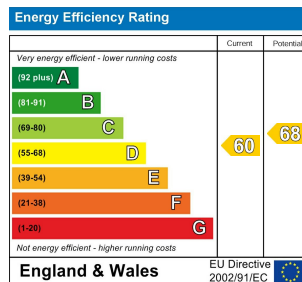
First Floor

These plans are prepared in accordance with the guidelines as set out by the RICS Code of Measuring Practice. Whilst every attempt has been made to ensure accuracy, all measurements should be treated as approximate and as such are for illustrative purposes only. Not to Scale. Photos | Floor Plans | Energy Performance Certificates | Design | Print www.townandcountrymedia.co.uk © Town & Country Media 2015

Council Tax Band: B

Local Authority: Bath and North East Somerset

Agents Note: Whilst every care has been taken to prepare these particulars, they are for guidance purposes only. All measurements are approximate and are for general guidance purposes only and whilst every care has been taken to ensure their accuracy, they should not be relied upon and potential buyers/tenants are advised to recheck the measurements.



THE APARTMENT COMPANY®
 20TH ANNIVERSARY

4 Queen Street
 Bath
 BA1 1HE

01225 471 144

sales@theapartmentcompany.co.uk

www.theapartmentcompany.co.uk