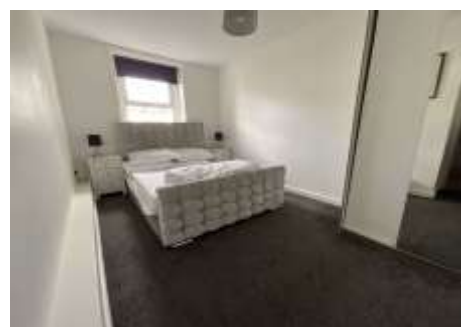


Estate Agents



Auctioneers



Christchurch Road, Bournemouth, BH1 3PD

Guide Price £180,000 - Leasehold

Two Bedroom First Floor Flat | Communal Entrance | Hallway | Lounge | Modern Kitchen
Modern Shower Room | Two Bedrooms | Allocated Parking | Long Lease | No Chain

Palm Court, Christchurch Road, Bournemouth, BH1 3PD

Guide Price £180,000 - Leasehold

This immaculately presented two-bedroom first-floor apartment is situated in a great location, within close proximity to Bournemouth town centre, Bournemouth University and the stunning clifftops and beaches. The property features double glazing, modern electric heating, a 13ft reception room, a modern kitchen equipped with a built-in oven and hob, two good-sized bedrooms, and a contemporary shower room. There is also allocated parking available.

The property has been successfully used as a holiday let, making it a great option for a second home by the sea, a rental investment, or a permanent residence. The well-maintained building offers the added convenience of a secure communal entrance, a lift service, and the benefit of being adjacent to a local supermarket for essential daily goods.

This property is offered with no chain, and viewing is highly recommended.

Tenure: Leasehold (Holiday Lets & Pets Allowed on Lease)

Service Charge: £1,400.00 per annum

Ground Rent: £150.00 per annum

Council Tax Band: A

EPC Rating: 53 | E



GROSS INTERNAL AREA
TOTAL: 546 sq.ft, 51 m²

SIZES AND DIMENSIONS ARE APPROXIMATE, ACTUAL MAY VARY SLIGHTLY