



Estate Agents



Auctioneers



# Thornbury Road, Hengistbury Head, Bournemouth, Dorset, BH6 4HU

**Offers In Excess Of £650,000 – Freehold**

**Four Bedroom Two Bathroom Detached Bungalow | Entrance Hallway | Reception Room | Kitchen/Diner  
Two Ground Floor Bedrooms | Modern Shower Room | Utility Room & Stairs to First Floor Landing  
Two First Floor Double Bedrooms | Modern Bathroom | Multiple Parking | Garage | Rear Garden**

A deceptively spacious four-bedroom, two-bathroom detached bungalow situated in a quiet location in the heart of Hengistbury Head, just a few minutes' walk from the picturesque coastline at Hengistbury Head and Southbourne, as well as walks along the River Stour to Christchurch Harbour. The bungalow is offered for sale in good condition throughout and boasts UPVC double glazing, gas central heating, a 16' x 15' reception room, two ground-floor bedrooms, an impressive 17' kitchen/diner, a modern ground-floor shower room and additional cloakroom, two double first-floor bedrooms, and a modern four-piece bathroom suite, multiple off-street parking, a garage converted into an office with a w/c, and a low-maintenance rear garden. Viewing is highly recommended. Enter via the front door into the hallway.

To the front aspect is the spacious 16' x 15' reception room, featuring a fireplace and a window overlooking the front. The kitchen/diner is fitted with an extensive range of wall and base units with contrasting work surfaces over and a range of built-in appliances including an oven and hob, fridge/freezer, plus space for a washing machine and plenty of room for a table and chairs; French doors then lead out to the patio. There are two double bedrooms on the ground floor - the first is to the front aspect, has a bay window, and a door leading to the shower room, which has a large walk-in shower, w/c, and basin with stylish tiling. The second bedroom is to the rear of the property, and there is also an additional w/c. A further room to the rear of the property has stairs to the first floor and a door leading out to the garden, along with fitted units, and is used as a utility space.

Upstairs, from the spacious landing, there are two generous double bedrooms and a modern four-piece bathroom suite, comprising a bath, shower cubicle, w/c, and basin again with stylish tiling.

Outside, there are multiple off-street parking spaces to the front of the property for 2-3 cars. A timber-built shed with double doors leads to the detached garage, which has been converted into a useful office room with its own w/c. The rear garden is low-maintenance, mainly laid to lawn, with a patio area.

Tenure: Freehold

EPC Rating: 68 | D

Council Tax Banding: D

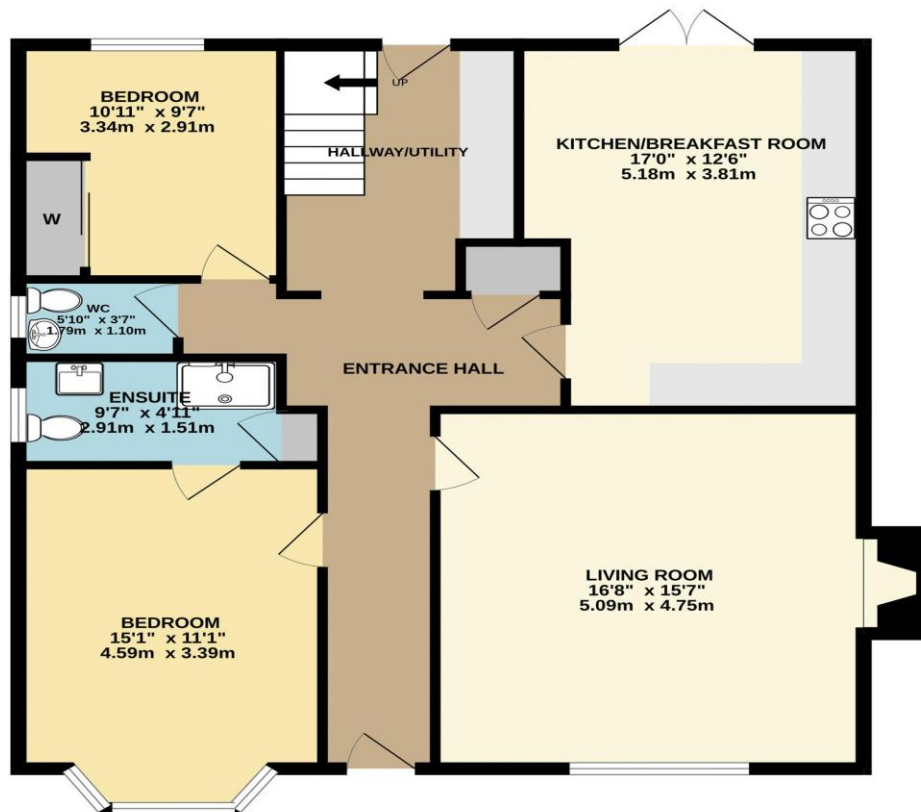




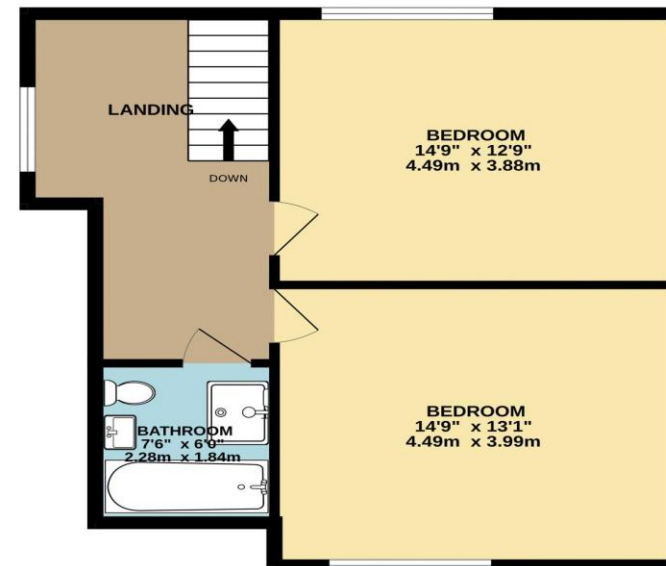




GROUND FLOOR



1ST FLOOR



Whilst every attempt has been made to ensure the accuracy of the floorplan contained here, measurements of doors, windows, rooms and any other items are approximate and no responsibility is taken for any error, omission or mis-statement. This plan is for illustrative purposes only and should be used as such by any prospective purchaser. The services, systems and appliances shown have not been tested and no guarantee as to their operability or efficiency can be given.  
Made with Metropix ©2024

Disclaimer These particulars, whilst believed to be accurate are set out as a general outline only for guidance and do not constitute any part of an offer or contract. Intending purchasers should not rely on them as statements of representation of fact, but must satisfy themselves by inspection or otherwise as to their accuracy. We have not carried out a detailed survey nor tested the services, appliances and specific fittings. Room sizes should not be relied upon for carpets and furnishings. The measurements given are approximate. No person in this firm's employment has the authority to make or give any representation or warranty in respect of the property.

**Richard Godsell – Estate Agents – Auctioneers**

3 Southbourne Grove • Southbourne • Bournemouth • BH6 3RE

Tel: 01202 424214 | Email: southbourne@richardgodsell.com

Offices at

**Southbourne • Christchurch • London**

www.richardgodsell.com

