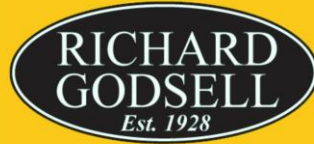


Estate Agents



Auctioneers



## **Carbery Mount, Carbery Avenue, Southbourne, BH6 3LJ** **£230,000 - Share of Freehold**

Two Bedroom Ground Floor Flat | Communal Entrance | Hallway | Modern Kitchen  
15' Reception Room with French Doors to Patio | Two Bedrooms | Modern Bathroom  
Garage | Communal Grounds | No Chain

Carbery Mount, Carbery Avenue, Southbourne, BH6 3LJ

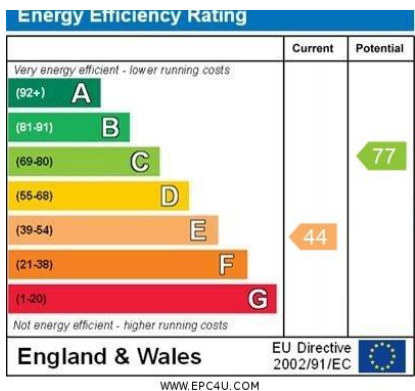
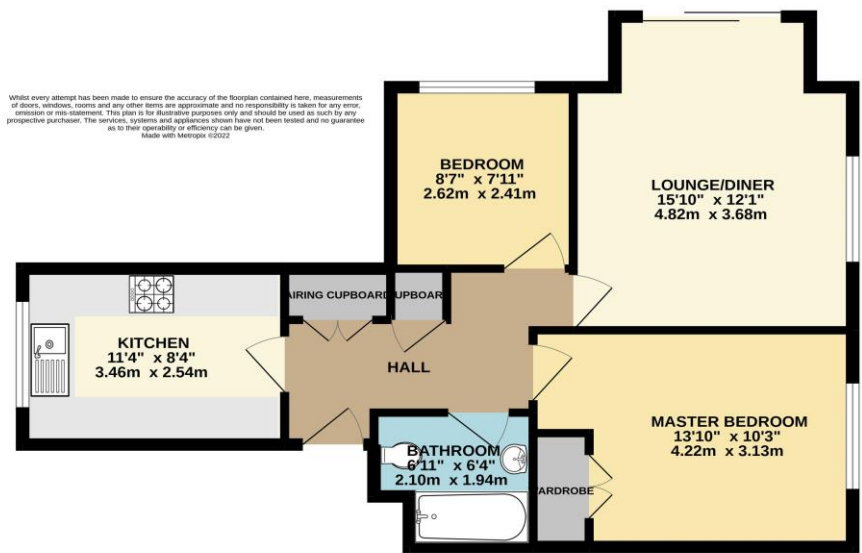
£230,000 - Share of Freehold

A well presented, purpose-built two-bedroom ground-floor flat is situated in a convenient location. It is close to the popular shopping parade at Southbourne Grove, with its array of coffee shops, bars, and restaurants, and the clifftop, with award-winning blue-flag beaches below.

The property features double glazing, newly installed electric heating, a modern kitchen with built-in oven and hob, and a modern bathroom with a white three-piece suite. There is a bright and spacious double-aspect 15-foot reception room with sliding doors leading to a private south-facing patio. The 13-foot main bedroom has a fitted cupboard, and bedroom two measures 8' x 7'11". There is no chain. Viewing is recommended.

Tenure: Share of Freehold  
Service Charge: £1,800 per annum  
EPC Rating: 44 | E  
Council Tax Band: C

GROUND FLOOR



See all our properties at  
 OnTheMarket.com

These particulars, whilst believed to be accurate are set out as a general outline only for guidance and do not constitute any part of an offer or contract. Intending purchasers should not rely on them as statements of representation of fact, but must satisfy themselves by inspection or otherwise as to their accuracy. We have not carried out a detailed survey nor tested the services, appliances and specific fittings. Room sizes should not be relied upon for carpets and furnishings. The measurements given are approximate. No person in this firms employment has the authority to make or give any representation or warranty in respect of the property.