

Estate Agents



Auctioneers



Southbourne Grove, Southbourne, Bournemouth. BH6 3RA £195,000 Leasehold

One Bedroom First Floor Flat

Lounge | Kitchen | Bedroom | Shower Room | Communal Bike Store | Long Lease

Southbourne Grove, Southbourne, Bournemouth. BH6 3RA

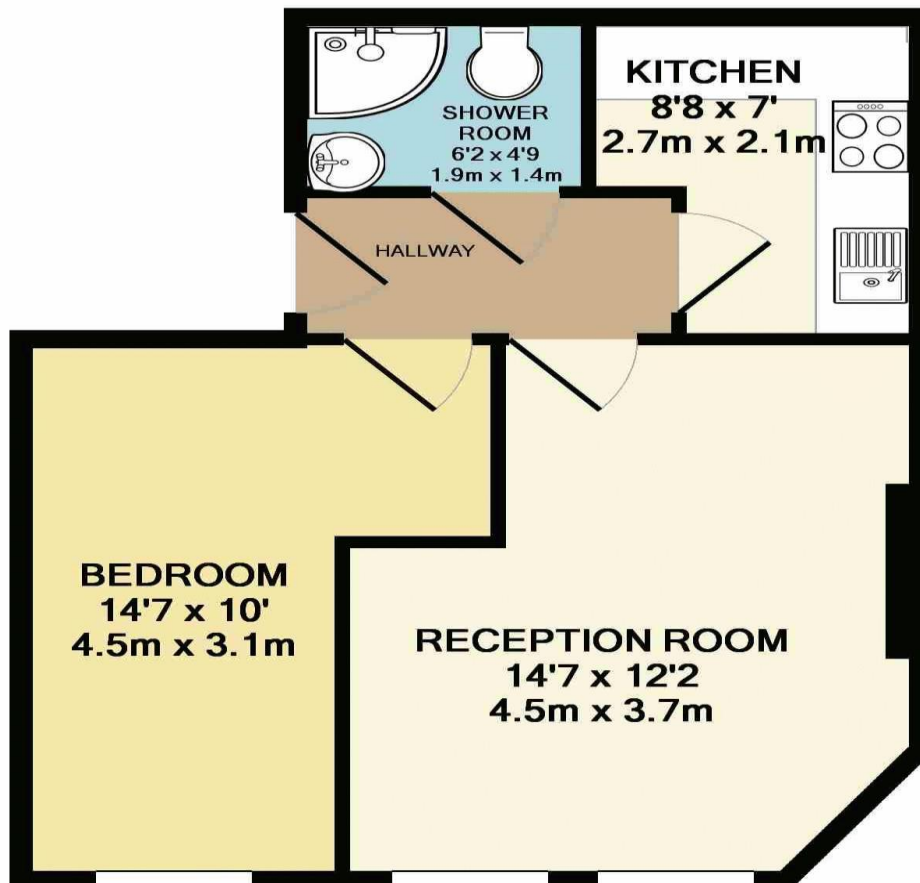
£195,000 Leasehold

A great flat situated in an ultra convenient location above shops in the heart of Southbourne Grove's bustling shopping area with its array of independent shops, cafes and bars - the stunning clifftops and award winning sandy beach is under half a mile away.

The flat features a 14' x 12' reception room, 14' double bedroom, modern shower room and kitchen with built-in appliances; further benefits include gas central heating and a communal bike store. Ideal First Time purchase or long term rental Investment.

Lease: Approx. 169 years remaining
Maintenance: Approx. £700 per annum

Ground Rent: £150 per annum
Council Tax Band: B



TOTAL APPROX. FLOOR AREA 382 SQ.FT. (35.5 SQ.M.)

Whilst every attempt has been made to ensure the accuracy of the floor plan contained here, measurements of doors, windows, rooms and any other items are approximate and no responsibility is taken for any error, omission, or mis-statement. This plan is for illustrative purposes only and should be used as such by any prospective purchaser. The services, systems and appliances shown have not been tested and no guarantee as to their operability or efficiency can be given

Made with Metropix ©2017