

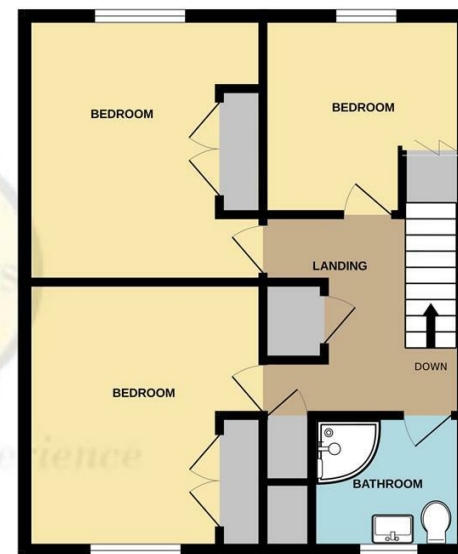
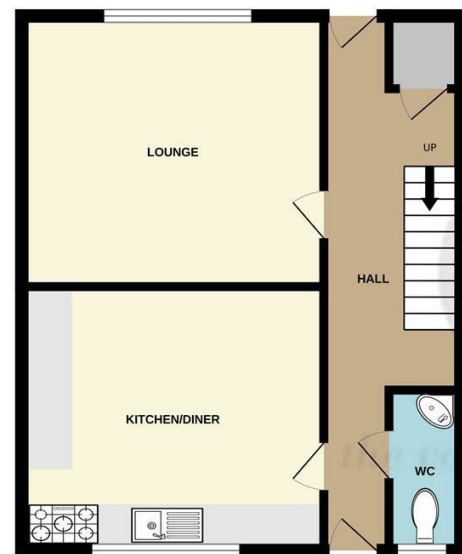


## Property Details

**TERSONS** *the voice of experience*

GROUND FLOOR

1ST FLOOR



Whilst every attempt has been made to ensure the accuracy of the floorplan contained here, measurements of doors, windows, rooms and any other items are approximate and no responsibility is taken for any error, omission or mis-statement. This plan is for illustrative purposes only and should be used as such by any prospective purchaser. The services, systems and appliances shown have not been tested and no guarantee as to their operability or efficiency can be given.  
Made with Metropix ©2025

Money laundering regulations - Intending purchasers will be asked to produce identification documentation at a later stage and we would ask for your co-operation in order that there will be no delay in agreeing the sale.

Tersons for themselves and for the vendors or lessors of this property whose agents they are give notice that:- (1) These particulars are set out as a general outline only for the guidance of intended purchasers or lessees and do not constitute part of an offer or contract. (2) All descriptions, dimensions, reference to condition, services or appliances and necessary commissions for use and occupation are given without responsibility and any intending purchasers or tenants must satisfy themselves as to their correctness. (3) The vendors or lessors do not make or give, and neither do Tersons for themselves nor any person in their employment any authority to make or give any representation or warranty whatever in relation to this property. (4) These details do not form part of any contract to purchase or lease the property.



**www.tersons.com**  
29 Castle Street, Dover, Kent, CT16 IPT



**£249,000**

**242 Anzio Crescent, Burgoyne Heights, Dover CT15 5LZ**

- **THREE BEDROOM FAMILY HOME**
- **POPULAR LOCATION**
- **CHAIN FREE**
- **ALLOCATED PARKING SPACE**
- **FRONTS ONTO A PLAYING FIELD**
- **ENERGY RATING - D (64)**



To arrange a viewing please call **01304 246111**





The property is arranged over two floors. On the ground floor there is a lounge, kitchen/diner, and cloakroom. On the first floor there are 3 bedrooms, shower room, and ample of storage space. The property benefits from double glazing and gas central heating. To the outside there is an enclosed rear garden and allocated parking space.

An early viewing is highly recommended on this chain free property.

This property is situated in the popular residential area of Burgoyne Heights, close to the village of Guston which boasts a local public house and primary school within walking distance. It is only a short drive to Dover town centre, the main-line railway station at Dover Priory with the fast link train to St Pancras in just over 1 hour 5 minutes and also Dover Port with its regular ferry service to France. There are excellent access routes to the A2/M2 to Canterbury and London. Dover offers a good range of primary and secondary schools, including the boys' and girls' grammar schools.

The accommodation comprises (measurements are maximum, taken into bays and extremes):-

#### GROUND FLOOR

Double glazed door to entrance hall.

#### Entrance Hall

Cupboard. Radiator. Stairs to first floor. Under stairs storage space/study area. Double glazed door to rear garden.

#### Kitchen/Diner

13'4" x 11'5" (4.06 x 3.48)

Fitted out with a range of worktop and base units with tiling around. 1½ bowl sink and drainer. Space for cooker, washing machine, fridge/freezer and dishwasher. Double glazed window to front. Radiator.

#### Lounge

13'4" x 11'9" (4.06 x 3.58)

Double glazed window to rear. Radiator.

#### WC

Low level WC. Hand wash basin. Double glazed window to front.

#### FIRST FLOOR

Landing. Loft access. Storage cupboard x 2. Radiator.

#### Bedroom 1

11'8" x 10'5" (3.56 x 3.18)

Double glazed window to rear. Built in wardrobes with cupboard containing the water cylinder. Radiator.

#### Bedroom 2

11'7" x 10'4" (3.53 x 3.15)

Double glazed window to front. Built in cupboards. Radiator.

#### Bedroom 3

8'11" x 8'8" (2.72 x 2.64)

Double glazed window to rear. Built in cupboards. Radiator.

#### Shower Room

6'6" x 5'5" (1.98m x 1.65m)

Corner shower cubicle. Low level WC. Hand wash basin. Radiator. Frosted double glazed window to front.

#### Outside

Front Garden - Footpath to entrance door. Small lawn area.

Outside Storage cupboard.



Rear Garden:- Laid to patio area. Rear access gate.

Allocated parking space.

The vendor has advised that the annual estate charges are approximately £480.

The above information should be checked by your legal representative before proceeding.

Council Tax - Band C

Energy Rating - D (64)

Viewing

Strictly by arrangement with the agents, Tersons  
01304 246111  
www.tersons.com



www.tersons.com



www.tersons.com