



## Property Details

**TERSONS** *the voice of experience*

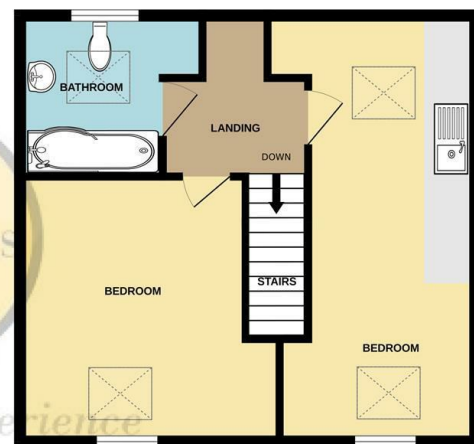


**£305,000**

**147B London Road , Dover CT17 0TG**

GROUND FLOOR

1ST FLOOR



Whilst every attempt has been made to ensure the accuracy of the floorplan contained here, measurements of doors, windows, rooms and any other items are approximate and no responsibility is taken for any error, omission or mis-statement. This plan is for illustrative purposes only and should be used as such by any prospective purchaser. The services, systems and appliances shown have not been tested and no guarantee as to their operability or efficiency can be given.  
Made with Metropix ©2025

Money laundering regulations - Intending purchasers will be asked to produce identification documentation at a later stage and we would ask for your co-operation in order that there will be no delay in agreeing the sale.

Tersons for themselves and for the vendors or lessors of this property whose agents they are give notice that:- (1) These particulars are set out as a general outline only for the guidance of intended purchasers or lessees and do not constitute part of an offer or contract. (2) All descriptions, dimensions, reference to condition, services or appliances and necessary commissions for use and occupation are given without responsibility and any intending purchasers or tenants must satisfy themselves as to their correctness. (3) The vendors or lessors do not make or give, and neither do Tersons for themselves nor any person in their employment any authority to make or give any representation or warranty whatever in relation to this property. (4) These details do not form part of any contract to purchase or lease the property.



**www.tersons.com**  
**29 Castle Street, Dover, Kent, CT16 IPT**

- **THREE BEDROOM DETACHED CHALET BUNGALOW**
- **CHAIN FREE**
- **OFF ROAD PARKING FOR 2-3 CARS**
- **REAR GARDEN**
- **BEDROOM WITH EN-SUITE SHOWER ROOM**
- **ENERGY RATING - C (79)**



To arrange a viewing please call **01304 246111**





THIS DETACHED CHALET BUNGALOW WITH OFF ROAD PARKING IS SET ON A PRIVATE DRIVE WITH TWO OTHER PROPERTIES, JUST BACK FROM THE LONDON ROAD. On the ground floor is a lounge/diner, kitchen and bedroom with en-suite shower room. On the first floor are two bedrooms and bathroom. Benefits include double glazing and gas central heating.

To the outside is off road parking for 2-3 cars and rear garden which back onto the river Dour,

An early viewing is highly recommended on this chain free property.

This property is situated, close to the town centre with its shops and amenities, however more locally are a parade of local shops too. Dover Priory main-line railway station with the fast-link train to London St Pancras in approx. 1 hour 5 mins, is also close by. There is excellent road access up to the A2/M2 and also the M20 via the Alkham Valley.

The accommodation comprises (measurements are maximum, taken into bays and extremes):-

#### GROUND FLOOR

Double glazed front door opening to entrance

hall. Stairs to first floor. Doors to lounge/diner and bedroom.

#### Lounge/Diner

22'7 x 10'10 (6.88m x 3.30m)

Double glazed window to front. Double glazed patio doors opening to rear garden. Two radiators. Doors to kitchen.

#### Kitchen

10'9 x 7'10 (3.28m x 2.39m)

Fitted with a range of worktop and base units. Space for cooker, fridge/freezer and washing machine. Wall mounted boiler. Double glazed window to rear and double glazed door to garden access.

#### Bedroom

10' x 7' (3.05m x 2.13m)

Double glazed window to front. Radiator. Wall mounted electric consumer board. Under stairs storage cupboard. Door to en-suite shower room.

#### En-Suite Shower Room

11'1 x 2'9 (3.38m x 0.84m)

Shower cubicle. Low level WC and wash basin. Radiator, Frosted double glazed window to front.

#### FIRST FLOOR

#### Landing

Storage space area. Doors to bedrooms and bathroom.

#### Bedroom

22' max x 7' (6.71m max x 2.13m)

Double glazed window to rear and frosted velux window to front. Radiator, Worktop and sink.

#### Bedroom

12'10 x 10'11 (3.91m x 3.33m)

Frosted velux window to front. Radiator.

#### Bathroom

8'11 max x 7' (2.72m max x 2.13m)

Panelled bath with separate shower over. Low level WC and wash basin. Radiator. Frosted velux to rear.

#### OUTSIDE

Off road parking for 2-3 cars.

Rear garden - Patio area, lawn and various shrubs and bushes. Garden is open to the river Dour.

Energy Rating - C (79)



Council Tax - Band C

Viewing

Strictly by arrangement with the agents, Tersons  
01304 246111

[www.tersons.com](http://www.tersons.com)



[www.tersons.com](http://www.tersons.com)



[www.tersons.com](http://www.tersons.com)