



## Property Details

*the voice of experience*



Whilst every attempt has been made to ensure the accuracy of the floorplan contained here, measurements of doors, windows, rooms and any other items are approximate and no responsibility is taken for any error, omission or mis-statement. This plan is for illustrative purposes only and should be used as such by any prospective purchaser. The services, systems and appliances shown have not been tested and no guarantee as to their operability or efficiency can be given.  
Made with Metapix ©2024

Money laundering regulations - Intending purchasers will be asked to produce identification documentation at a later stage and we would ask for your co-operation in order that there will be no delay in agreeing the sale.

Tersons for themselves and for the vendors or lessors of this property whose agents they are give notice that:- (1) These particulars are set out as a general outline only for the guidance of intended purchasers or lessees and do not constitute part of an offer or contract. (2) All descriptions, dimensions, reference to condition, services or appliances and necessary commissions for use and occupation are given without responsibility and any intending purchasers or tenants must satisfy themselves as to their correctness. (3) The vendors or lessors do not make or give, and neither do Tersons for themselves nor any person in their employment any authority to make or give any representation or warranty whatever in relation to this property. (4) These details do not form part of any contract to purchase or lease the property.



**www.tersons.com**  
29 Castle Street, Dover, Kent, CT16 IPT



**6 Park Street , Dover CT16 IEP**

- **FANTASTIC FAMILY HOME**
- **THREE DOUBLE BEDROOMS**
- **GOOD ORDER THROUGHOUT**
- **OFF ROAD PARKING**
- **LOW MAINTENANCE REAR GARDEN**
- **ENERGY RATING - D (61)**



To arrange a viewing please call **01304 246111**





THIS MID - TERRACE HOUSE WILL MAKE AN IDEAL FAMILY HOME, OFFERING THREE DOUBLE BEDROOMS AND IS IN GOOD ORDER THROUGHOUT. On the ground floor is a lounge, dining room, kitchen and store room. On the first floor is the spacious bathroom, bedroom 1 and a separate WC. On the top floor are two further bedrooms.

Further benefits include double glazing, gas central heating, rear garden and off road parking to the front.

An early viewing is highly recommended.

This terraced home is located on the level in a popular residential area just a short walk away from local shops including Asda & Morrisons, St James shopping area and the town centre. There is a good selection of primary and secondary schools, including the Girl's and Boy's Grammar close by. There are excellent access routes to the A2/M2 and the A20/M20. The main line railway station at Dover Priory with its fast link to London in just over an hour, is also a short drive away.

The accommodation comprises (measurements are maximum, taken into bays and extremes):-

#### GROUND FLOOR

Front door opening to entrance porch.

##### Entrance Porch

Glazed panel door to lounge.

##### Lounge

15'1 x 12'4 (4.60m x 3.76m)

Double glazed windows to front. Radiator. Gas fire with wooden mantelpiece over. Open to hallway and open to dining room.

##### Dining Room

12'7 x 10'1 (3.84m x 3.07m)

Double glazed window to rear. Two alcove storage cupboards. Door to hallway.

##### Hallway

Stairs to first floor. Under stairs storage cupboard. Wall mounted electric meter and consumer board. Door to kitchen.

##### Kitchen

14'1 x 7'2 (4.29m x 2.18m)

Fitted with a range of worktop base and wall units. Integrated oven and hob with extractor over. Space for fridge/freezer, washing machine and freezer. Double glazed window to side and double glazed door opening to garden access. Door to storage room.

##### Storage Room

7'9 x 4'7 (2.36m x 1.40m)

Storage space. Frosted double glazed windows to side and rear.

#### FIRST FLOOR

##### Landing

Stairs to top floor. Doors to bedroom 1, bathroom and separate WC.

##### Bedroom 1

15'2 x 12'5 (4.62m x 3.78m)

Double glazed window to front. Radiator.

##### Bathroom

12'8 x 10'2 (3.86m x 3.10m)

Spacious bathroom, with separate bath and large walk in shower tray. Low level WC and wash basin. Frosted double glazed window to rear. Radiator. Cupboard containing the boiler.

##### Separate WC

Low level WC and wash basin with cupboard under. Frosted double glazed window to rear.

#### TOP FLOOR

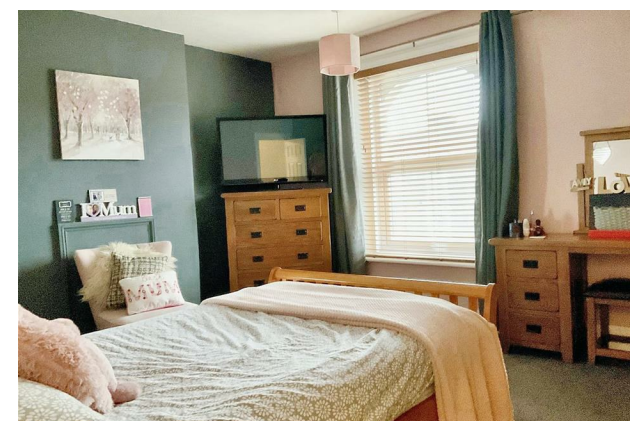
##### Landing

Double glazed window to rear. Doors to bedrooms 2 & 3.

##### Bedroom 2

15'3 x 12'5 (4.65m x 3.78m)

Double glazed window to front. Radiator.



##### Bedroom 3

12' x 10'2 (3.66m x 3.10m)

Double glazed window to rear with castle views. Radiator. Storage cupboard. Loft access.

##### Cellar

Useful cellar space, accessed via the under stairs cupboard. Limited head height.

#### OUTSIDE

Front - Driveway with off road parking for one car. Tap.

Rear - Laid to patio and shingle area. Shed. Gate for rear access.

Energy Rating - D (61)

Council Tax - Band D

##### Viewing

Strictly by arrangement with the agents, Tersons 01304 246111

www.tersons.com



www.tersons.com



www.tersons.com