

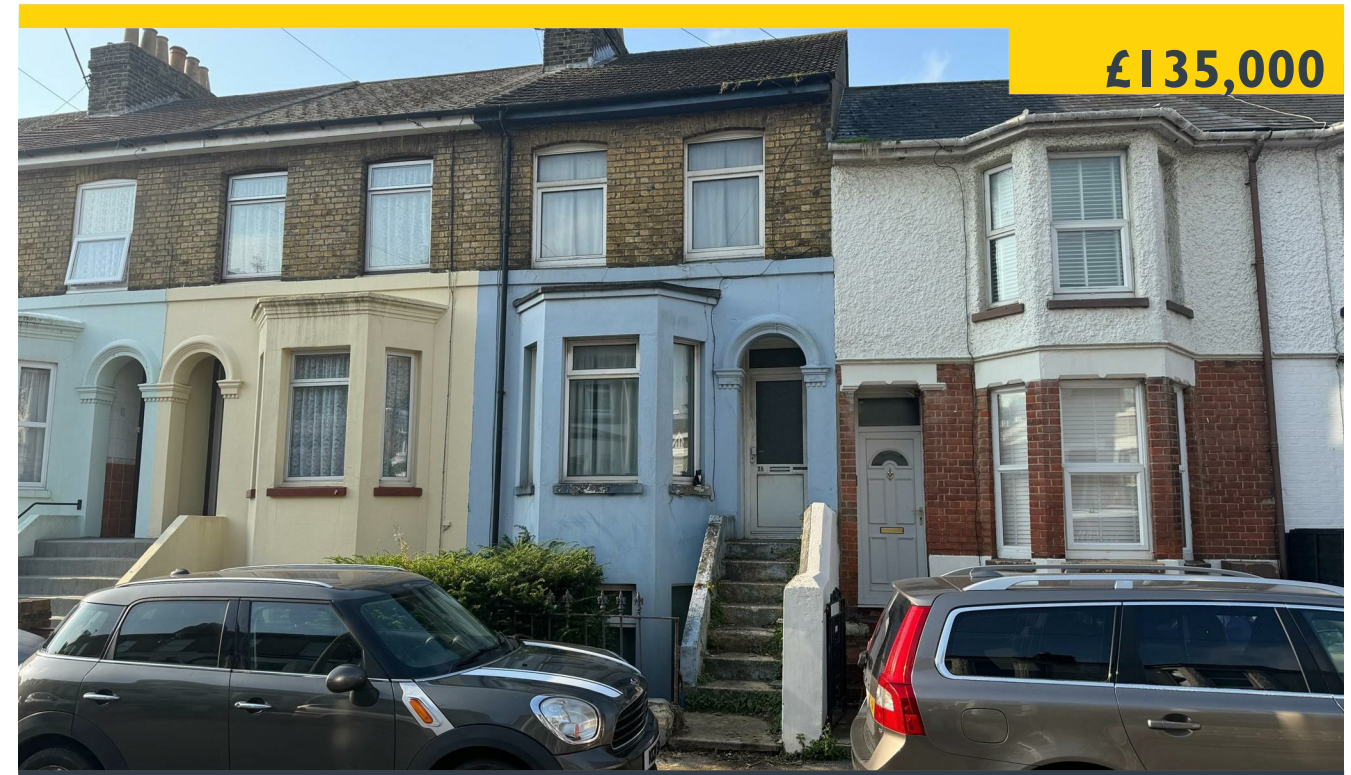


Property Details



the voice of experience

Auction Guide



£135,000

25 Avenue Road, , Dover CT16 2PX

- **AUCTION PROPERTY - CONTACT CLIVE EMSON AUCTION HOUSE**
- **GUIDE PRICE £135,000 - £140,000 + FEES**
- **TERRACED HOUSE FOR IMPROVEMENT**
- **FREEHOLD WITH VACANT POSSESSION**
- **ENERGY RATING - E (39)**

Money laundering regulations - Intending purchasers will be asked to produce identification documentation at a later stage and we would ask for your co-operation in order that there will be no delay in agreeing the sale.

Tersons for themselves and for the vendors or lessors of this property whose agents they are give notice that:- (1) These particulars are set out as a general outline only for the guidance of intended purchasers or lessees and do not constitute part of an offer or contract. (2) All descriptions, dimensions, reference to condition, services or appliances and necessary commissions for use and occupation are given without responsibility and any intending purchasers or tenants must satisfy themselves as to their correctness. (3) The vendors or lessors do not make or give, and neither do Tersons for themselves nor any person in their employment any authority to make or give any representation or warranty whatever in relation to this property. (4) These details do not form part of any contract to purchase or lease the property.



www.tersons.com
29 Castle Street, Dover, Kent, CT16 IPT



To arrange a viewing please call **01304 246111**



AUCTION PROPERTY *** GUIDE PRICE
£135,000 - £140,000 + FEES. CONTACT CLIVE
EMSON AUCTIONEERS TO ARRANGE A
VIEWING www.cliveemson.co.uk ***

TERRACE HOUSE FOR IMPROVEMENT

A mid terrace house situated on the level area
of Dover, within close proximity of various
supermarkets, with the town centre beyond.

This three storey property is in need of
improvement and refurbishment. It is considered
to offer potential to convert into a one
bedroom lower ground floor flat and a two
bedroom maisonette on the upper floors,
subject to all necessary consents being
obtainable.

Lower Ground Floor

Entrance porch, living room with bay window to
front, dining room, kitchen with door to garden.
WC and inner hall with stairs to upper ground
floor.

Upper Ground Floor

Entrance hall, bedroom one with bay window to
front, bedroom two and bathroom.

First Floor

Landing and two further bedrooms.

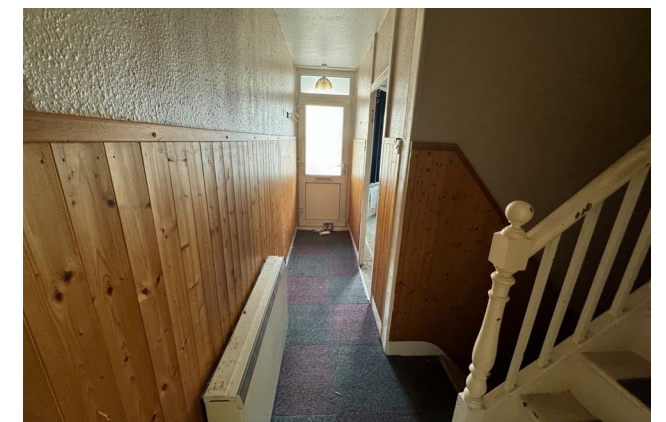
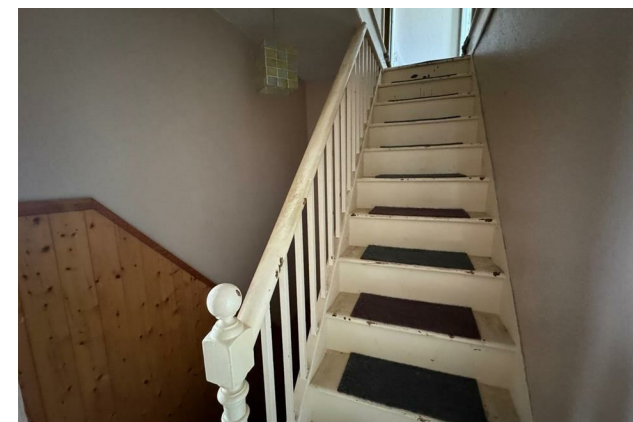
Outside
Rear garden.

Council Tax Band B

Energy Rating - E (39)

Local Planning Authority
Dover District Council

PLEASE CONTACT CLIVE EMSON AUCTION
HOUSE FOR VIEWING DETAILS, DATES,
LEGAL INFORMATION AND FEES



www.tersons.com



www.tersons.com