



38 Stanley Road, Warmley, Bristol, BS15 4NX

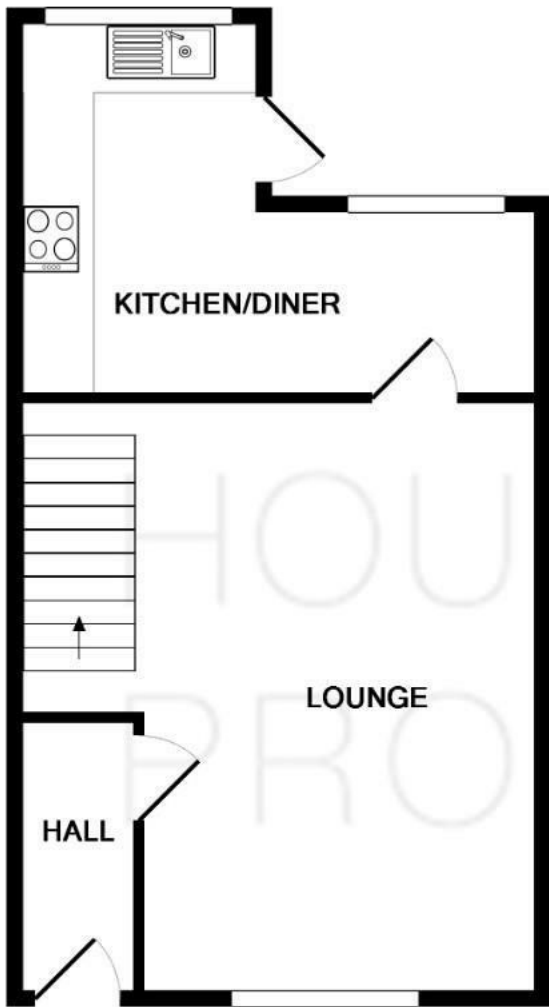
House + Co Property are delighted to offer this three bedroom middle terrace home situated in Stanley Road, Warmly. The accommodation comprises to the ground floor entrance hallway, spacious lounge, kitchen diner. Upstairs a four piece bathroom, two double bedrooms and a third single room. Further benefits include a large rear garden, gas central heating, double glazed windows, and white goods. Available now and offered unfurnished.

- Available now
- Unfurnished
- Large Garden

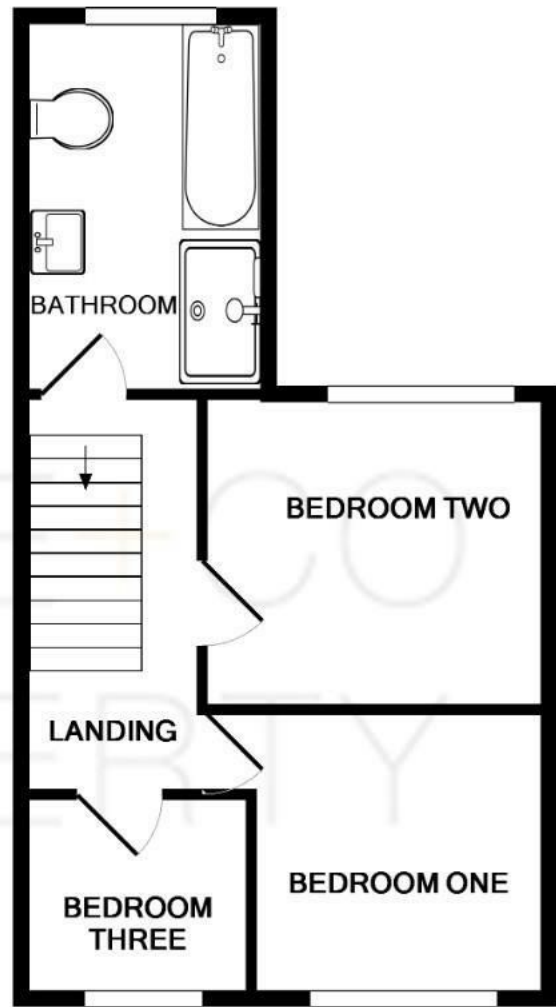
Minimum Tenancy Term - 6 or 12 months by agreement

Council Tax Band - Band B (South Gloucestershire)

£1,395 Per month



GROUND FLOOR



1ST FLOOR

Whilst every attempt has been made to ensure the accuracy of the floor plan contained here, measurements of doors, windows, rooms and any other items are approximate and no responsibility is taken for any error, omission, or mis-statement. This plan is for illustrative purposes only and should be used as such by any prospective purchaser. The services, systems and appliances shown have not been tested and no guarantee as to their operability or efficiency can be given

Made with Metropix ©2018

