



**3 West Mill,  
Easton On The Hill, PE9 3NX**



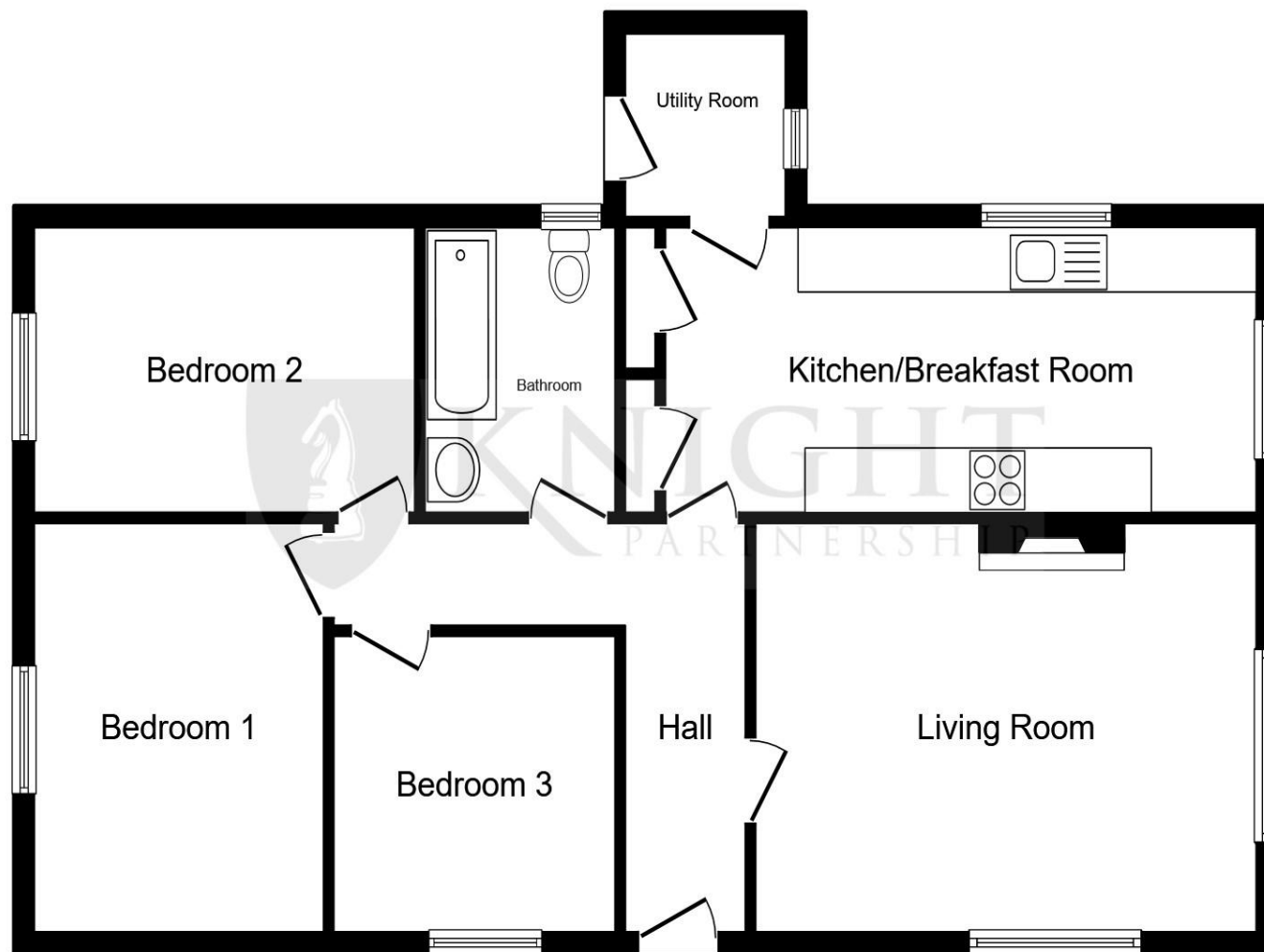
**KNIGHT**  
PARTNERSHIP



*Welcome to*  
**3 West Mill**

FOR SALE VIA MODERN METHOD OF AUCTION! A detached bungalow with no onward chain located in the sought after village of Easton on the Hill, in need of some updating this property offers an opportunity to improve to your own taste and style.





This floor plan is for illustrative purposes only. It is not drawn to scale. Any measurements, floor areas (including any total floor area), openings and orientation are approximate. No details are guaranteed, they cannot be relied upon for any purpose and they do not form part of any agreement. No liability is taken for any error, omission or misstatement. A party must rely upon its own inspection(s). Powered by [www.focalagent.com](http://www.focalagent.com)

## Auctioneer's Comments

This property is offered through Modern Method of Auction. Should you view, offer or bid your data will be shared with the Auctioneer, iamsold Limited. This method requires both parties to complete the transaction within 56 days, allowing buyers to proceed with mortgage finance (subject to lending criteria, affordability and survey). The buyer is required to sign a reservation agreement and make payment of a non-refundable Reservation Fee of 4.5% of the purchase price including VAT, subject to a minimum of £6600.00 including VAT. This fee is paid in addition to purchase price and will be considered as part of the chargeable consideration for the property in the calculation for stamp duty liability. Buyers will be required to complete an identification process with iamsold and provide proof of how the purchase would be funded. The property has a Buyer Information Pack containing documents about the property. The documents may not tell you everything you need to know, so you must complete your own due diligence before bidding. A sample of the Reservation Agreement and terms and conditions are contained within this pack. The buyer will also make payment of no more than £349 inc. VAT towards the preparation cost of the pack. Please confirm exact costs with the auctioneer. The estate agent and auctioneer may recommend the services of other providers to you, in which they will be paid for the referral. These services are optional, and you will be advised of any payment, in writing before any services are accepted. Listing is subject to a start price and undisclosed reserve price that can change.

### Entrance Hall

#### Lounge

16' 11" x 13' 1" ( 5.16m x 3.99m )

#### Kitchen

9' 1" x 19' 7" ( 2.77m x 5.97m )

#### Utility

5' 11" x 6' 6" ( 1.80m x 1.98m )

#### Bedroom One

9' 8" x 12' 10" ( 2.95m x 3.91m )

#### Bedroom Two

9' 2" x 13' ( 2.79m x 3.96m )

#### Bedroom Three

7' 11" x 9' 4" ( 2.41m x 2.84m )

#### Bathroom

9' 1" x 5' 1" ( 2.77m x 1.55m )

*Welcome to*

### 3 West Mill

- Sale by Modern Auction (T&Cs apply)
- Subject to an undisclosed Reserve Price
- Buyers fees apply
- Detached Spacious Bungalow
- Cul-de-sac Position
- Driveway & Garage
- No Chain

Tenure: Freehold EPC Rating: D  
Council Tax Band: D

guide price

**£240,000**

A spacious detached bungalow located in the popular village of Easton on the Hill which lies along the A43 just outside Stamford with amenities including a village pub, post office/general store and cafe. The accommodation is thoughtfully configured to offer the entrance hall accessed from the drive with door opening into the dual aspect lounge with feature fireplace. Also from the hall is the dual aspect kitchen breakfast room with pantry and integrated appliances including oven, hob and dishwasher and space for the fridge freezer. Beyond the kitchen is a utility room with plumbing and electric for both washing machine and tumble dryer. From the entrance hall a corridor leads to the rear of the property where there are three bedrooms and family bathroom fitted with a white three-piece suite including a shower over the bath.

Outside the property lies behind a lawned front garden with driveway leading to a single detached garage with power and light. To the rear is a low maintenance garden with summer house and shed.

The property is available with no onward chain and viewing is recommended.



Please note the marker reflects the postcode not the actual property

 **01780 765060**

 [mailroom@knightpartnership.com](mailto:mailroom@knightpartnership.com)

 3 Red Lion Street, STAMFORD, Lincolnshire, PE9 1PA

 **knightpartnership.com**

1. MONEY LAUNDERING REGULATIONS Intending purchasers will be asked to produce identification documentation at a later stage and we would ask for your co-operation in order that there is no delay in agreeing the sale. 2. These particulars do not constitute part or all of an offer or contract. 3. The measurements indicated are supplied for guidance only and as such must be considered incorrect. Potential buyers are advised to recheck measurements before committing to any expense. 4. We have not tested any apparatus, equipment, fixtures or services and it is in the buyers interest to check the working condition of any appliances. 5. Where an EPC, or a Home Report (Scotland only) is held for this property, it is available for inspection at the branch by appointment. If you require a printed version of a Home Report, you will need to pay a reasonable production charge reflecting printing and other costs. 6. We are not able to offer an opinion either written or verbal on the content of these reports and this must be obtained from your legal representative. 7. Whilst we take care in preparing these reports, a buyer should ensure that his/her legal representative confirms as soon as possible all matters relating to title including the extent and boundaries of the property and other important matters before exchange of contracts.

Knight Partnership is a trading name of Sequence (UK) Limited which is registered in England and Wales under company number 4268443, Registered Office is Cumbria House, 16-20 Hockliffe Street, Leighton Buzzard, Bedfordshire, LU7 1GN. VAT Registration Number is 500 2481 05.



Property Ref:  
SMD105164 - 0003



**KNIGHT**  
PARTNERSHIP