



Scotgate
Stamford PE9 2YB

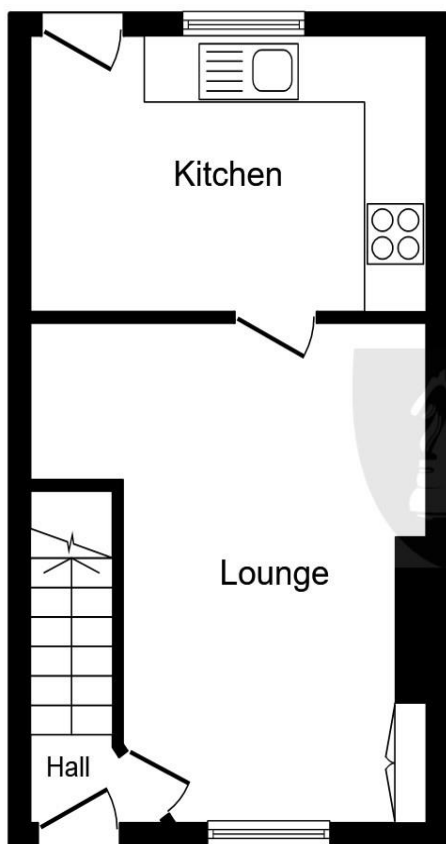


KNIGHT
PARTNERSHIP

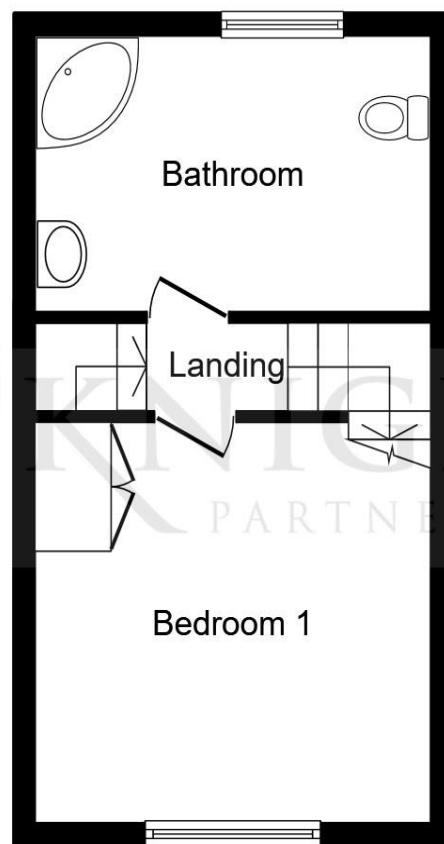
Welcome to **Scotgate**

This instantly recognisable edifice is found in the very heart of Stamford. If you are looking to soak up the sights and sounds of Stamford this property offers convenience and charm just steps away from All Saints Church, Red Lion Square and the Meadows beyond.

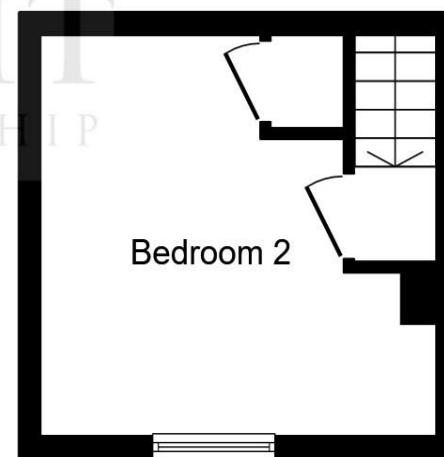




Ground Floor



First Floor



Second Floor

Entrance Hall

Lounge Dining Room

15' 8" x 9' 4" (4.78m x 2.84m)

Kitchen

10' 6" x 6' 11" (3.20m x 2.11m)

Stairs To The First Floor

Bedroom One

12' 9" x 14' 2" (3.89m x 4.32m)

Bathroom

10' 2" x 6' 7" (3.10m x 2.01m)

Stairs To The Second Floor

Bedroom Two

13' 3" x 13' 11" (4.04m x 4.24m)

This floor plan is for illustrative purposes only. It is not drawn to scale. Any measurements, floor areas (including any total floor area), openings and orientation are approximate. No details are guaranteed, they cannot be relied upon for any purpose and they do not form part of any agreement. No liability is taken for any error, omission or misstatement. A party must rely upon its own inspection(s). Powered by www.focalagent.com

Welcome to

Scotgate

- Stunning Grade II Listed Town House
- Two Double Bedrooms
- Period Home
- Beautifully Finished Kitchen & Bathroom
- Lounge Dining Room
- Centrally Located By All Saints Church
- Rear Access
- No Onward Chain

Tenure: Freehold EPC Rating: Exempt

offers over

£300,000



Please note the marker reflects the postcode not the actual property

 **01780 765060**

 mailroom@knightpartnership.com

 3 Red Lion Street, STAMFORD, Lincolnshire, PE9 1PA

 **knightpartnership.com**

1. MONEY LAUNDERING REGULATIONS Intending purchasers will be asked to produce identification documentation at a later stage and we would ask for your co-operation in order that there is no delay in agreeing the sale. 2. These particulars do not constitute part or all of an offer or contract. 3. The measurements indicated are supplied for guidance only and as such must be considered incorrect. Potential buyers are advised to recheck measurements before committing to any expense. 4. We have not tested any apparatus, equipment, fixtures or services and it is in the buyers interest to check the working condition of any appliances. 5. Where an EPC, or a Home Report (Scotland only) is held for this property, it is available for inspection at the branch by appointment. If you require a printed version of a Home Report, you will need to pay a reasonable production charge reflecting printing and other costs. 6. We are not able to offer an opinion either written or verbal on the content of these reports and this must be obtained from your legal representative. 7. Whilst we take care in preparing these reports, a buyer should ensure that his/her legal representative confirms as soon as possible all matters relating to title including the extent and boundaries of the property and other important matters before exchange of contracts.

Knight Partnership is a trading name of Sequence (UK) Limited which is registered in England and Wales under company number 4268443, Registered Office is Cumbria House, 16-20 Hockliffe Street, Leighton Buzzard, Bedfordshire, LU7 1GN. VAT Registration Number is 500 2481 05.



Property Ref:
SMD104852 - 0002



KNIGHT
PARTNERSHIP