



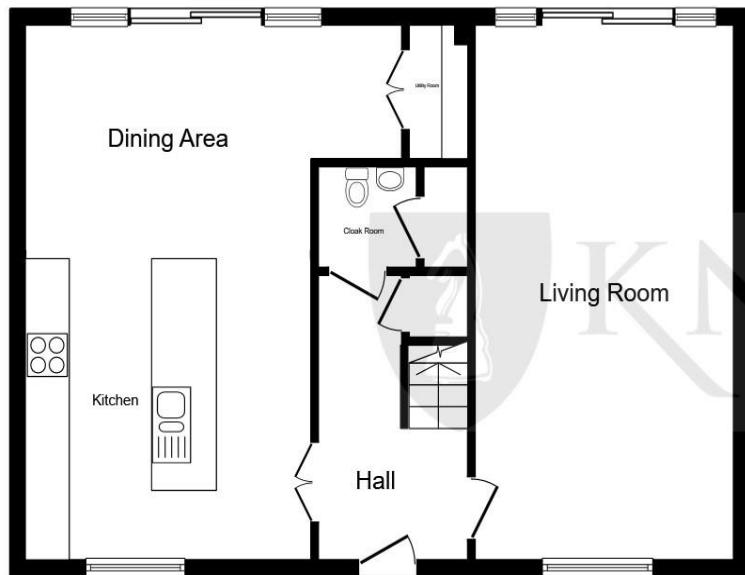
The Somerton The Crescent, Ketton Stamford PE9 3SY

welcome to

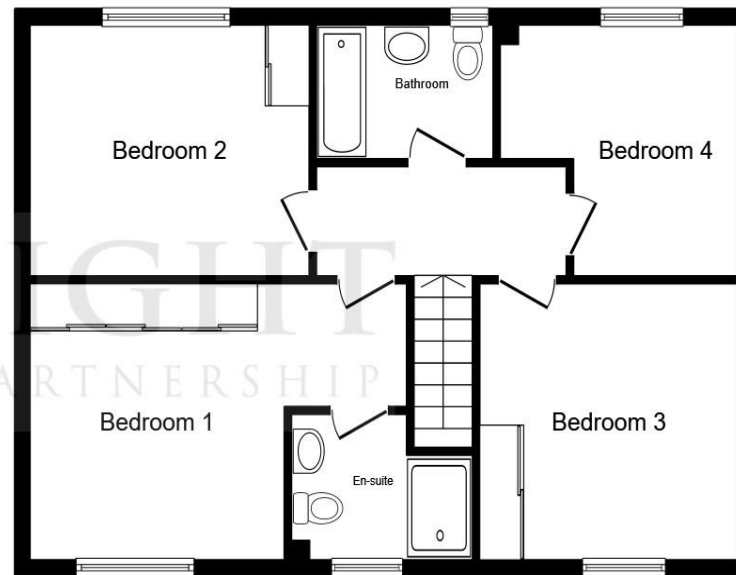
The Somerton The Crescent, Ketton Stamford

Plot 8 The Somerton is a four-bedroom detached family home. The ground floor boasts a spacious lounge and a well-appointed kitchen with dining area.





Ground Floor



First Floor

Entrance Hall

Cloakroom

Living Room

22' 1" x 11' 4" (6.73m x 3.45m)

Kitchen Area

8' 8" x 12' 7" (2.64m x 3.84m)

Dining Area

13' 3" x 12' 7" (4.04m x 3.84m)

Utility Room

5' 6" x 2' 8" (1.68m x 0.81m)

Bedroom One

11' 4" x 11' 4" (3.45m x 3.45m)

En-Suite Shower Room

6' x 8' 1" (1.83m x 2.46m)

Bedroom Two

10' 5" x 12' 5" (3.17m x 3.78m)

Bedroom Three

11' 4" x 11' 6" (3.45m x 3.51m)

Bedroom Four

10' 5" x 10' 7" (3.17m x 3.23m)

Bathroom

5' 5" x 7' 9" (1.65m x 2.36m)

This floor plan is for illustrative purposes only. It is not drawn to scale. Any measurements, floor areas (including any total floor area), openings and orientation are approximate. No details are guaranteed, they cannot be relied upon for any purpose and they do not form part of any agreement. No liability is taken for any error, omission or misstatement. A party must rely upon its own inspection(s). Powered by www.focalagent.com

welcome to

The Somerton The Crescent, Ketton Stamford

- Four double bedrooms with the principal bedroom benefiting from an en-suite and fitted wardrobes
- A "Symphony" fitted open plan kitchen to include an integrated oven, hob, extractor fan, fridge/freezer and dishwasher.
- Single detached garage with parking for two cars
- £15,000 Towards Stamp Duty Paid
- 10 year NHBC warranty

Tenure: Freehold EPC Rating: Exempt
Council Tax Band: Deleted



Please note the marker reflects the
postcode not the actual property

view this property online knightpartnership.com/Property/SMD104819



Property Ref:
SMD104819 - 0006

1. MONEY LAUNDERING REGULATIONS Intending purchasers will be asked to produce identification documentation at a later stage and we would ask for your co-operation in order that there is no delay in agreeing the sale. 2. These particulars do not constitute part or all of an offer or contract. 3. The measurements indicated are supplied for guidance only and as such must be considered incorrect. Potential buyers are advised to recheck measurements before committing to any expense. 4. We have not tested any apparatus, equipment, fixtures or services and it is in the buyers interest to check the working condition of any appliances. 5. Where an EPC, or a Home Report (Scotland only) is held for this property, it is available for inspection at the branch by appointment. If you require a printed version of a Home Report, you will need to pay a reasonable production charge reflecting printing and other costs. 6. We are not able to offer an opinion either written or verbal on the content of these reports and this must be obtained from your legal representative. 7. Whilst we take care in preparing these reports, a buyer should ensure that his/her legal representative confirms as soon as possible all matters relating to title including the extent and boundaries of the property and other important matters before exchange of contracts.

Knight Partnership is a trading name of Sequence (UK) Limited which is registered in England and Wales under company number 4268443, Registered Office is Cumbria House, 16-20 Hockliffe Street, Leighton Buzzard, Bedfordshire, LU7 1GN. VAT Registration Number is 500 2481 05.

Awaiting Photograph



01780 765060



mailroom@knightpartnership.com



3 Red Lion Street, STAMFORD, Lincolnshire,
PE9 1PA



knightpartnership.com