



221, High Street, Eastleigh, SO50 5LX
£1,100 PCM

Conveniently situated in High Street and within easy walk station, a 2 bedroom apartment. The accommodation on offer comprises kitchen / living room, good sized bedrooms, served with a three bathroom suite. Unfurnished & Available Mid July.

ESTATE AGENTS LETTING AGENTS PROPERTY MANAGEMENT AUCTIONEERS VALUERS PLANNING & DEVELOPMENT CONSULTANTS

David Evans Estate Agents is the trading name of David Evans Estate Agents Ltd. Registered Office: 4 High Street, Eastleigh, SO50 5LA Registered in England No. 3484796 VAT No. 704 5882 29



These particulars, whilst believed to be accurate are a general outline only and do not constitute any part of an offer or contract. Intending purchasers should not rely on them as statements or representations of fact, but must satisfy themselves by inspection or otherwise as to their accuracy. No person in the firm's employment has the authority to make or give any representation or warranty in respect of the property or any appliances or services at the property.

The property is accessed from the pavement via a upvc door with obscure glazed panel opening to the lounge / kitchen area.

Kitchen Area 9'10" x 9'4" (3.02 x 2.86)

Smooth plastered ceiling, ceiling light point, upvc obscure double glazed window to the rear aspect, continuation of the laminate floor covering from the lounge area.

The kitchen is fitted with a range grey gloss fronted handleless slow level cupboard and drawer base units, modern square edge heat resistant worksurface with a matching range of wall mounted cupboards over. Inset stainless steel sink unit with drainer and a mono bloc mixer tap over. Four burner electric 'Hotpoint' hob, stainless steel chimney style extractor hood over. 'Hotpoint' electric fan assisted oven, space for a tall fridge / freezer, space and plumbing for an automatic washing machine.



Lounge 8'3" x 13'10" (2.54 x 4.22)

Smooth plastered ceiling, six LED down lighters, upvc double glazed window to the front aspect, double panel radiator, provision of power points, Virgin point, laminate floor covering.



Master Bedroom 11'9" x 12'10" (3.60 x 3.93)

Smooth plastered ceiling, two ceiling light points, upvc double glazed window to the front aspect, double panel radiator and a provision of power points.



Bedroom 2 9'1" x 7'3" (2.79 x 2.22)

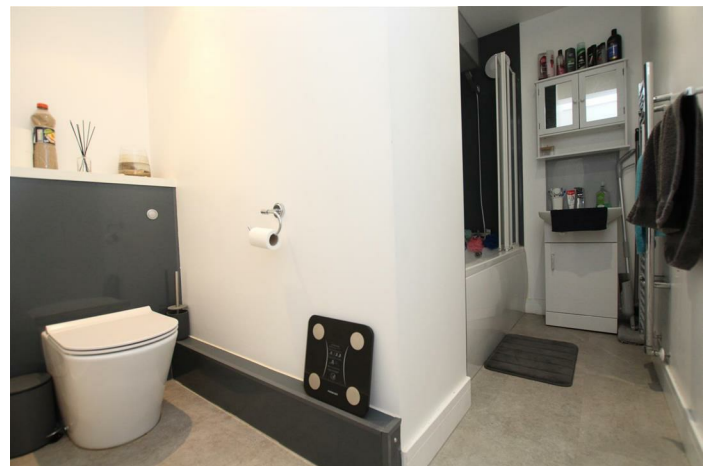
Smooth plastered ceiling, ceiling light point, upvc double glazed window to the front aspect, single panel radiator, provision of power points.

A large recessed area leads to a storage cupboard housing an 'Ariston' combination boiler and shelving.

Bathroom 9'4" x 7'7" (2.85 x 2.32)

Fitted with a three piece white suite comprising wash hand basin set within a vanity unit with storage below, concealed cistern low level wc with dual push flush. Panelled bath with a glass and chrome folding shower screen over and aqua board panelling within.

Smooth plastered ceiling, four LED down lighters, chrome heated towel rail, extractor fan and a laminate floor covering.



Council Tax Band A

