



**WREN'S NEST
MAIN STREET
BIGGIN-BY-HARTINGTON
SK17 0DQ**

PRICE: OFFERS AROUND £575,000





WREN'S NEST, MAIN STREET, BIGGIN-BY-HARTINGTON, SK17 0DQ

An idyllic, characterful three double bedroomed detached stone built country cottage occupying a rural village location within the picturesque Peak District National Park.

The cottage has been extensively and very sympathetically restored carefully retaining many fine original features complemented by a superb modern extension with full height windows to both floors taking full advantage of the open countryside views to the rear.

The extensive refurbishment programme includes: an extension to provide a fitted dining kitchen with full height windows and central French doors opening onto the rear garden; stunning master bedroom with bespoke full height gable window along with ensuite shower room; new bathroom suite; substantial newly built stone outbuilding; installation of double glazing to include upvc sash style windows to the front; a combination of engineered oak flooring, parquet flooring and quarry tiled flooring to the ground floor; vintage style radiators.

The accommodation briefly comprises: sitting room with exposed beams and feature fireplace, snug with exposed beams and stone fireplace with cast iron inset, dining kitchen, utility room and cloakroom to the ground floor. On the first floor there are three double bedrooms, ensuite shower room and family bathroom with roll top bath. The property stands on a generous plot with lawns and many pleasant, strategically placed seating areas along with summer house, stone built outbuilding and ample driveway parking.

Likely to suit a variety of buyers including families, professional couples and active retirees. There are many stunning Peak District countryside walks right from the doorstep, whilst remaining within easy access of the market towns of Ashbourne and Buxton.

ACCOMMODATION

A double-glazed front entrance door opens into the

Entrance Porch with double-glazed windows, tiled flooring and stained-glass door opening into the

Sitting Room 4.24m x 4.05m (13'11" x 13'3") (overall measurements) front aspect UPVC double-glazed sash style window, feature fireplace with wooden lintel and inset gas stove-style fire, three vintage style radiators, engineered oak flooring, staircase leading to the first floor and doors lead to the snug and dining kitchen.

Snug 3.92m x 2.87m (12'10" x 9'5") comprising front

aspect UPVC double glazed sash-style window, UPVC double-glazed side aspect window, vintage style radiator, parquet flooring, feature stone fireplace with cast iron inset, open fire grate and tiled hearth.

Dining Kitchen 5m x 4.41m (15'5" x 14'5") having a red and black quarry tiled floor, floor mounted kitchen units with worksurface over, integrated NEFF dishwasher, Belling range-style cooker with five ring electric hob and warming plate, two ovens, grill and warming drawer with extractor hood over. Complimentary tiled splashback, central island comprising base units and drawers with worksurface over and inset one and a half bowl ceramic sink and drainer unit. Two vintage radiators, recessed

ceiling spotlighting, two UPVC double-glazed side aspect windows, hardwood double-glazed French doors with full height side windows. Inbuilt cupboard housing the Worcester LPG gas combination boiler and consumer unit. A door leads to the

Utility Room 3.02m x 1.83m (9'11" x 6') having a continuation of the quarry tile flooring, fitted kitchen units matching those in the kitchen, work surface with space for two appliances below and plumbing for a washing machine. Vintage style radiator, rear aspect UPVC double-glazed window, double-glazed side entrance stable door and a door leads to the

Cloakroom having a continuation of the quarry tile flooring and comprising low-flush wc, wash-hand basin with vanity unit below, side aspect UPVC double glazed window and vintage style radiator.

First Floor Landing with inbuilt storage cupboard and doors leading to the bedrooms and family bathroom.

Master Bedroom 4.42m x 3.15m (14'6" x 10'4") (overall measurements including the En-Suite). An impressive room with hardwood double-glazed full height gable window taking full advantage of the open countryside views to the rear of the property. Two Velux windows, two vintage style radiators, inbuilt wardrobe and door leading into the

Ensuite Shower Room comprising a corner shower cubicle with mains control shower, pedestal wash-hand basin with tiled splashback, low-flush wc, vintage style radiator/heated towel rail, Velux window and extractor fan.

Bedroom Two 4.13m x 2.91m (13'6" x 9'6") having a vintage style radiator, front aspect UPVC sash-style window and in-built wardrobe over the stairs.

Bedroom Three 3.41m x 3.03m (11'2" x 9'11") having a vintage style radiator, front aspect UPVC double-glazed sash-style window and inbuilt cupboard over the stairs.

Family Bathroom 2.25m x 1.74m (7'4" x 5'8") comprising a roll-top bath on claw feet with shower attachment to the taps, low-flush wc, pedestal wash-hand basin with tiled splashback and vintage style radiator/ heated towel rail.

OUTSIDE

The property is approached over a gravelled driveway providing ample parking. To both sides of the driveway there are lawned gardens with shrub borders, enclosed by dry stone walling.

There is a gravelled seating area immediately to the front of the property which extends to the side where there is also a timber shed and

Stone Built Outbuilding 3.41m x 1.78m (11'2" x 5'10") with UPVC double-glazed windows, timber entrance door, light, power and water.

At the rear there is a paved patio with steps up to a raised lawn with shrub borders and pleasant seating areas enjoying the superb views over open countryside.

SERVICES

It is understood that mains electricity, water and drainage are connected. LPG gas central heating.

FIXTURES & FITTINGS

Other than those fixtures and fittings specifically referred to in these sales particulars no other fixtures and fittings are included in the sale. No specific tests have been carried out on any of the fixtures and fittings at the property.

TENURE

It is understood that the property is held freehold but interested parties should verify this position with their solicitors.

COUNCIL TAX

For Council Tax purposes the property is in band E

EPC RATING G

VIEWING

Strictly by prior appointment with the sole agents Messrs Fidler-Taylor & Co on 01335 346246.

WHAT3WORDS

pleasing.hopes.blush

Ref FTA2733



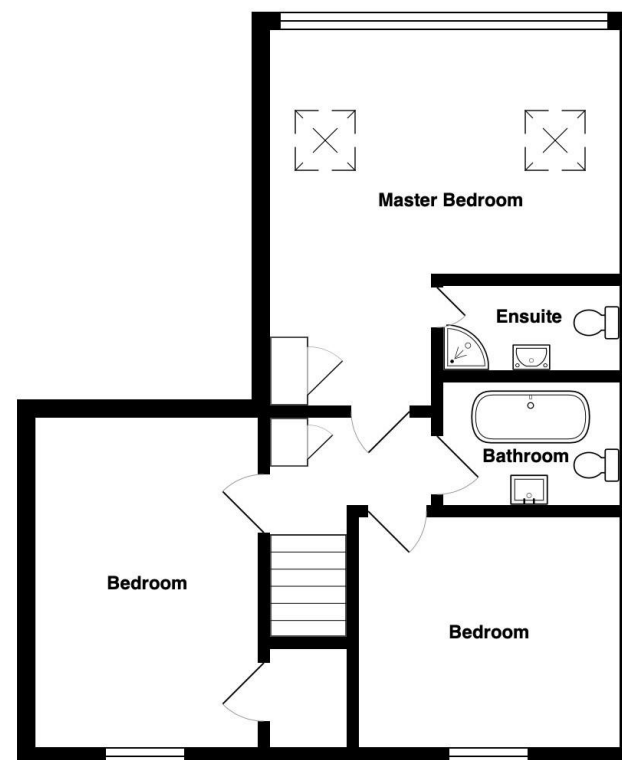
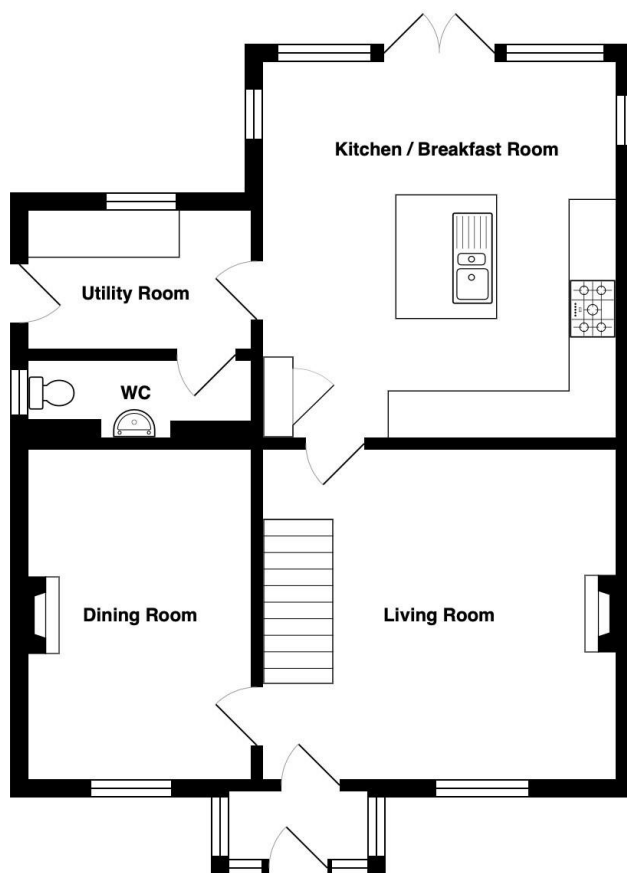








Wrens Nest, Main Street, Biggin, Buxton, SK17 0DQ



Total Area: 123.5 m² ... 1329 ft²

All measurements are approximate and for display purposes only



Independent Estate Agents, Surveyors, Valuers & Auctioneers

Distinctive Homes for Discerning Purchasers

11 Church Street, Ashbourne, Derbyshire, DE6 1AE

Telephone 01335 346246

also at

MATLOCK 01629 580228

www.fidler-taylor.co.uk

Note: These particulars are produced in good faith with the approval of the vendors and are given as a guide only. All measurements are approximate. The particulars form no part of a contract or lease.

