



Barns Court, Harlow,

Guide Price £700,000

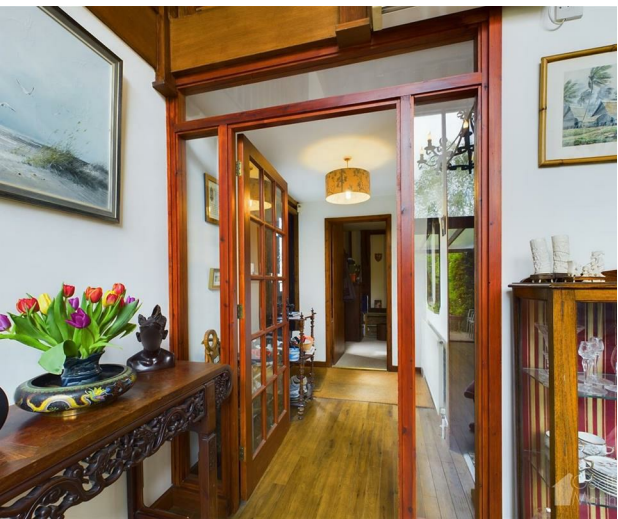
 Geoffrey
Matthew



GUIDE PRICE: £700,000 to £750,000.

Originally an 17th century barn converted approximately 35 years ago is this bright and spacious family home, brimming over with character. Vaulted ceilings, double storey barn window to the rear and many exposed timbers. The property has a good sized rear garden, approximately 96ft in width and a double garage to the side.

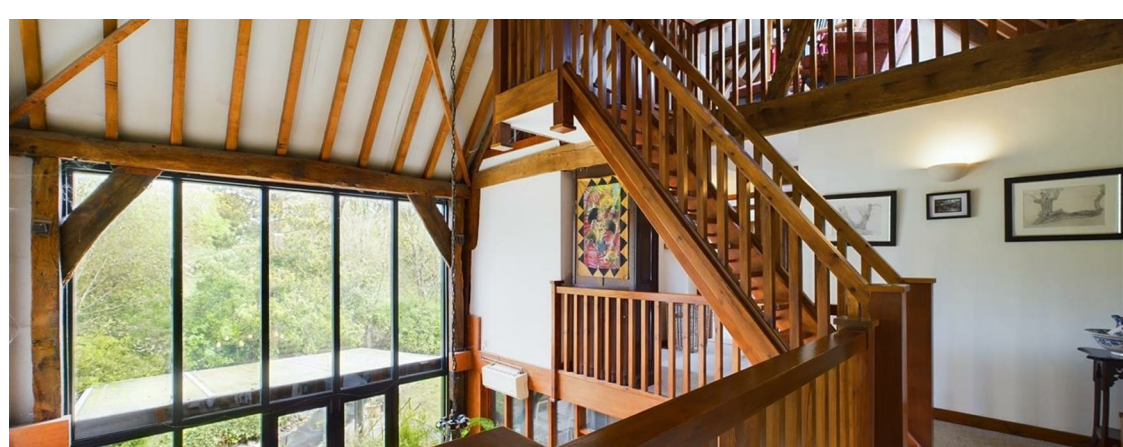
Inside the accommodation comprises a downstairs study, 5th bedroom if required. A ground floor shower room, a large open plan reception with large two storey barn window overlooking the rear. Vaulted ceilings and access through to the lounge/diner and kitchen. On the first floor, three good sized double bedrooms, a family bathroom, and a separate family shower room. Open tread wooden staircase leads onto the second floor. With a small study area leading to bedroom four.





- 17th Century
Converted Barn
- Vaulted Ceilings &
Double Storey Barn
Window
- Open Plan Reception
- Four/Five Bedrooms
- Grade II Listed
- Edge of Harlow close
to Epping Green
- Good size rear
garden
- Double Garage To
Side
- Small Gated
Community With
Other Period
Properties
- Viewing
Recommended









Summers Farm is located on the very edge of Harlow. Backing onto Epping Green leading onto Epping with its underground connection. Also, nearby you have Harlow Town train station giving access into London Liverpool Street. Easy access onto the M11 and A10. Barns Court is a small, gated community with other period properties set around an open courtyard, backing on to open park land.

Accommodation Comprises:

Reception Area

12'10 x 15'5 (3.91m x 4.70m)

Hallway

5'1 x 8'5 (1.55m x 2.57m)

Office/Bedroom Five

13'8 x 10'4 (4.17m x 3.15m)

Bathroom

6'9 x 6'5 (2.06m x 1.96m)

Kitchen

9'11 x 9'8 (3.02m x 2.95m)

Dining Room/Living Room

26' x 20'2" | _ shaped area (7.92m x 6.15m | _ shaped area)

First Floor Landing

9'3 x 6'6/16'2 x 3'7 (2.82m x 1.98m/4.93m x 1.09m)

Bedroom

13'5 x 13'8 (4.09m x 4.17m)

Bedroom

16'8 x 10'0 (5.08m x 3.05m)

Bathroom

9'10 x 6'5 (3.00m x 1.98m)

Bedroom

17'5 x 9'10 (5.31m x 3.00m)

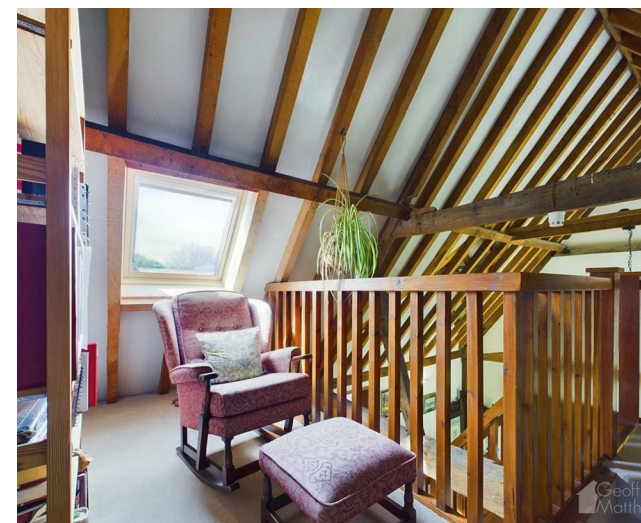
Bathroom

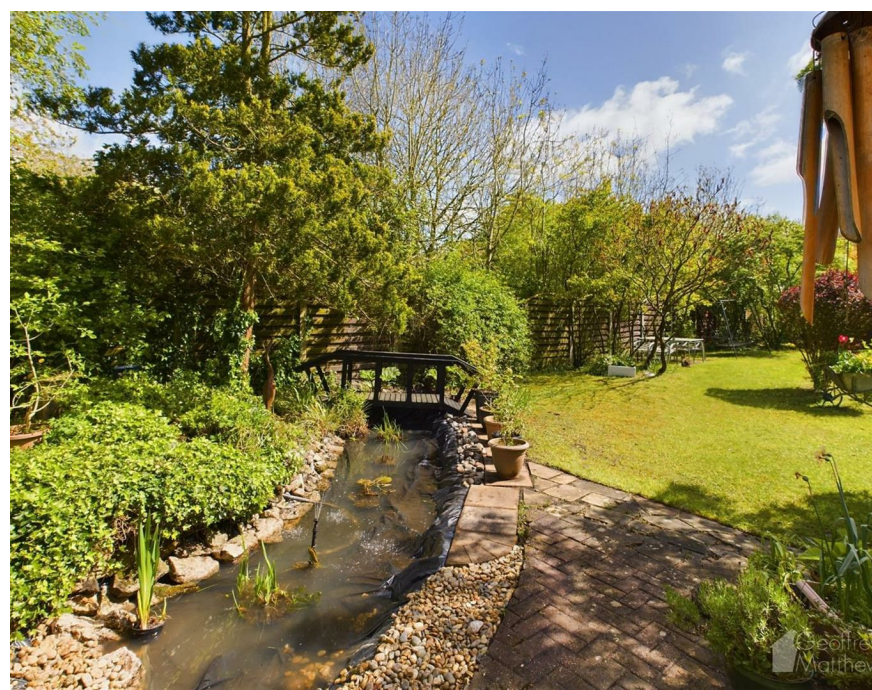
7'3 x 5'6 (2.21m x 1.68m)

Second Floor

Living Area/Bedroom 4

17'6 x 17'5 (5.33m x 5.31m)





Council Tax Details

Harlow Council G



These particulars, whilst believed to be accurate are set out as a general guideline only and do not constitute any part of an offer or contract. Intending purchasers should not rely on them as statements of representation of fact, but must satisfy themselves by inspection or otherwise as to their accuracy. No person in this firm's employment has the authority to make or give any representation or warranty in respect to the property.

