



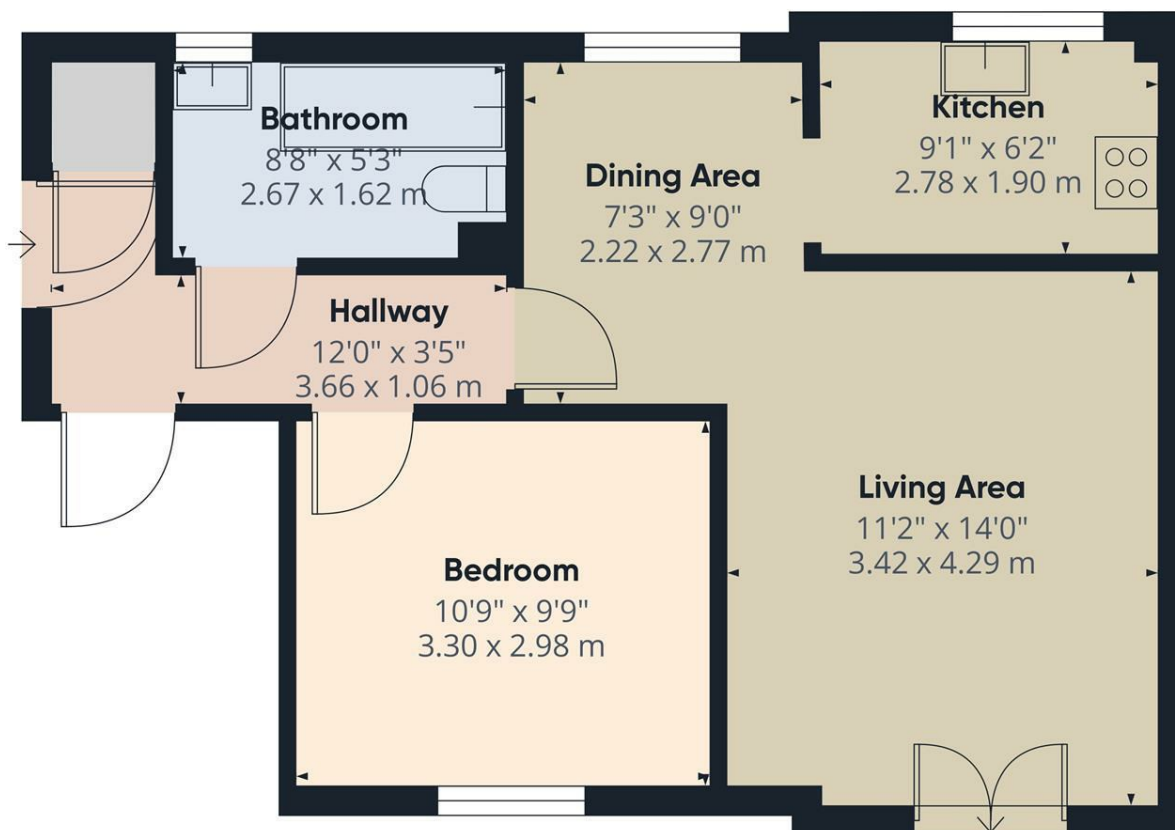
## 6 Bromley Close, East Road, Harlow, CM20 2GD

We are pleased to offer for rent this modern two bedroom modern apartment, the property benefits from two bedrooms, one being double integrated appliances & allocated parking for one car. Close to local shopping amenities. Access to main line train services to Cambridge and Liverpool Street. Very well presented. Close to Shops.

Viewing is highly recommended.

A holding deposit equivalent to one week's rent is payable in order to apply for this property.

**£1,300 Per Calendar Month**



Approximate total area<sup>m</sup>  
488 ft<sup>2</sup>  
45.2 m<sup>2</sup>

(1) Excluding balconies and terraces

Calculations reference the RICS IPMS 3C standard. Measurements are approximate and not to scale. This floor plan is intended for illustration only.

GIRAFFE360

