



Kingsland, Harlow, CM18 6XL

A 2 bedroom split level maisonette presented in a modern homely style with large bright living spaces. It's own enclosed garden backing on to woodland. With garden sheds and patio area. The property is set nicely back from the road. Two double bedrooms master bedroom with walk in storage. Good size kitchen with lit under stairs pantry. Recently up dated white 3 piece bathroom. Parking is on street the current vendors manage to park 4 vehicles.

£235,000

Kingsland, Harlow, CM18 6XL



- Two Double Bedooms
- Modern Kitchen
- Close to Staple Tye
- Split Level Maisonette
- Modern Bathroom
- Backs onto Woodland
- Enclosed Garden
- Easy reach of Town Centre
- Popualr location

Living Room

13'3" x 12'6" (4.04m x 3.81m)

Kitchen

16'5" x 9'1" (5.00m x 2.77m)

Bedroom 1

13'2" x 9,8" (4.01m x 2.74m,2.44m)

Bedroom 2

11' x 9'10" (3.35m x 3.00m)

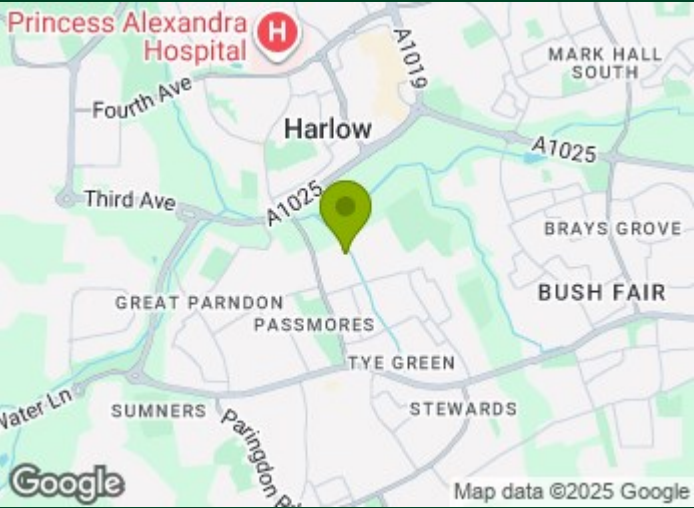
Bathroom

Gardens

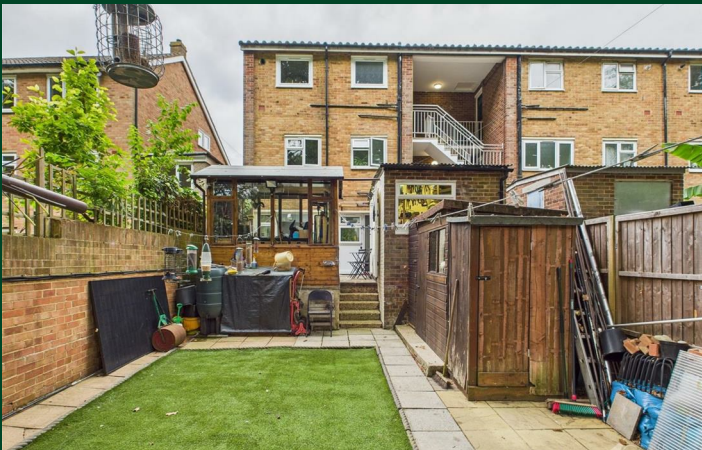
Small lawned front garden. Good sized enclosed rear garden.

Brick Shed

Timbed/Glazed Outbuilding



Directions



Floor Plan



Council Tax Details

Band B

These particulars, whilst believed to be accurate are set out as a general outline only for guidance and do not constitute any part of an offer or contract. Intending purchasers should not rely on them as statements of representation of fact, but must satisfy themselves by inspection or otherwise as to their accuracy. No person in this firms employment has the authority to make or give any representation or warranty in respect of the property.

