



## Foldcroft, Harlow, CM20 1SN

Geoffrey Matthew Property Management are delighted to offer this very well presented, three bedroom, mid terrace family home in the ever popular area of Spring Hills. The property offers spacious and versatile living accommodation, good size bedrooms and a generous rear garden.

Located within short reach of schools, amenities and transport links, this would be an ideal family home.

Viewing is recommended.

A holding Deposit equivalent to one weeks rent is payable to apply for this property.

**£1,600 Per Calendar Month**

## Foldcroft, Harlow, CM20 1SN



- Three Bedroom House
- Unfurnished
- Close To Schools/Hospital & Town Centre
- White Goods Only
- Gas Central Heating
- EPC Rating C
- Council Tax Band C

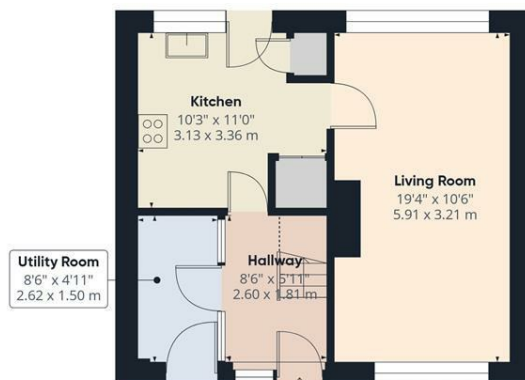


[Directions](#)

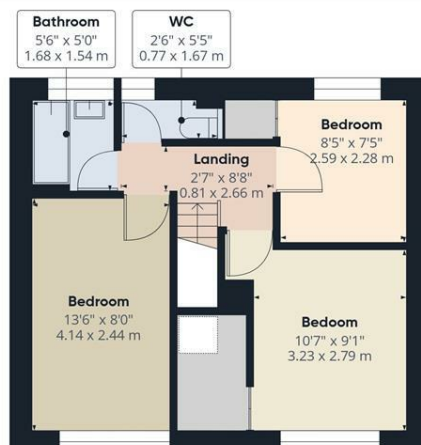




## Floor Plan



Floor 0



### Floor 1

Approximate total area<sup>(n)</sup>780 ft<sup>2</sup>72.3 m<sup>2</sup>

Reduced headroom

9 ft<sup>2</sup>0.9 m<sup>2</sup>

(1) Excluding balconies and terraces

Reduced headroom

..... Below 5 ft/1.5 m

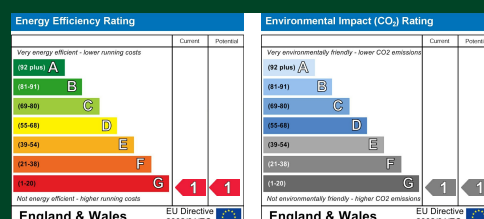
Calculations reference the RICS IPMS 3C standard. Measurements are approximate and not to scale. This floor plan is intended for illustration only.

GIRAFFE360

## Council Tax Details

## Band

These particulars, whilst believed to be accurate are set out as a general outline only for guidance and do not constitute any part of an offer or contract. Intending purchasers should not rely on them as statements of representation of fact, but must satisfy themselves by inspection or otherwise as to their accuracy. No person in this firm's employment has the authority to make or give any representation or warranty in respect of the property.



Old Harlow: 01279 444988 Email: [harlow@geoffreymatthew.co.uk](mailto:harlow@geoffreymatthew.co.uk)  
Great Ashby: 01438 740111 Email: [greatashby@geoffreymatthew.co.uk](mailto:greatashby@geoffreymatthew.co.uk)