



Mark Hall Moors, Harlow, CM20 2NE

Geoffrey Matthew Estates are delighted to offer this, first floor, one bedroom apartment in the popular and sought after area of Mark Hall Moors. In need of some cosmetic updating, the property itself is a good size and would make an ideal first time buy or investment.

Early viewings are highly recommended!

Offers In The Region Of £160,000

Mark Hall Moors, Harlow, CM20 2NE



- Chain Free
- Sought After Location
- First Floor
- Would Generate Competitive Yield If Rented!
- One Bedroom

Accommodation Comprises:

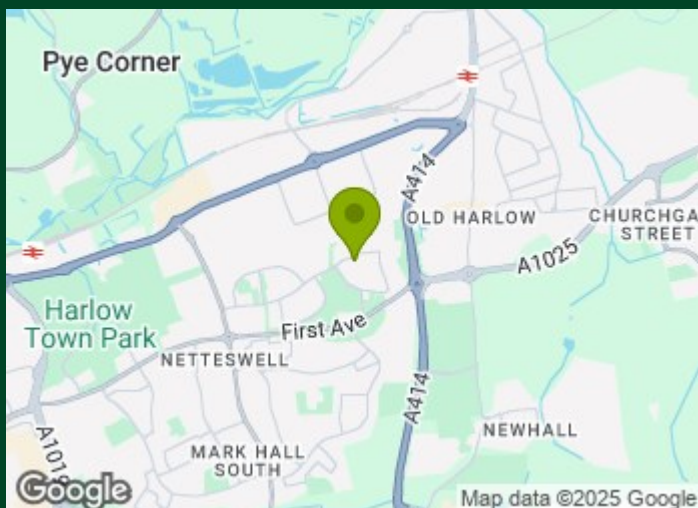
Entrance Hall

Lounge

Kitchen

Bedroom

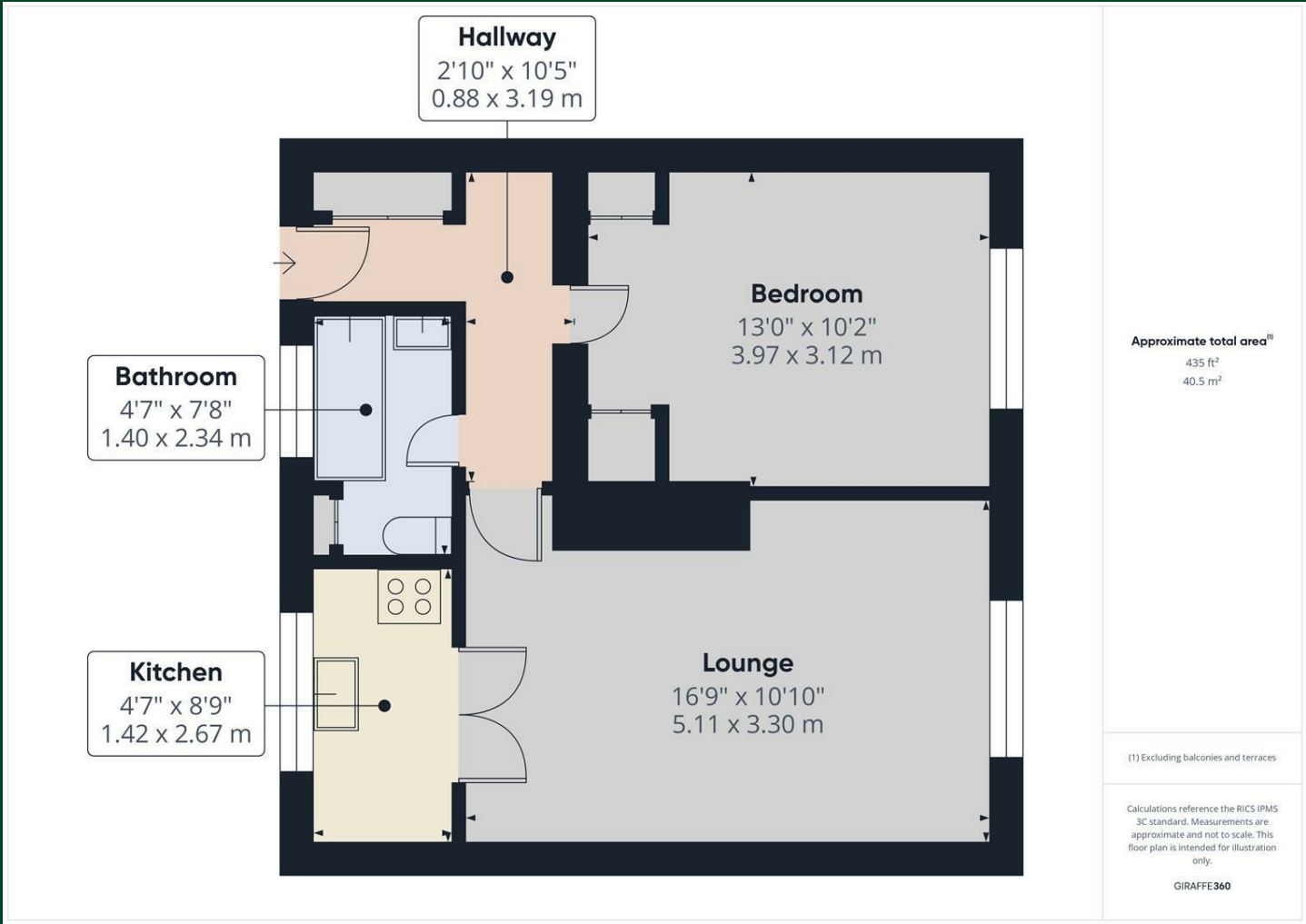
Bathroom



[Directions](#)



Floor Plan



Council Tax Details

Harlow Band A

These particulars, whilst believed to be accurate are set out as a general outline only for guidance and do not constitute any part of an offer or contract. Intending purchasers should not rely on them as statements of representation of fact, but must satisfy themselves by inspection or otherwise as to their accuracy. No person in this firms employment has the authority to make or give any representation or warranty in respect of the property.

