



Cleveland Way, Stevenage, SG1 6BH

Geoffrey Matthew Property Management is delighted to offer for let this modern well presented furnished two bedroom ground floor flat in the Great Ashby area on Cleveland Way. Internally the property comprises of one generous double bedroom, a second bedroom configured as a home office, modern fitted main bathroom with a good sized lounge and appliances in the kitchen. This property is offered on a fully furnished basis.

Viewing is highly recommended. Virtual Tour is available

Allocated Parking Space.

Holding Deposit payable equivalent to one weeks rent to apply for this property.

£1,350 Per Calendar Month

Cleveland Way, Stevenage, SG1 6BH



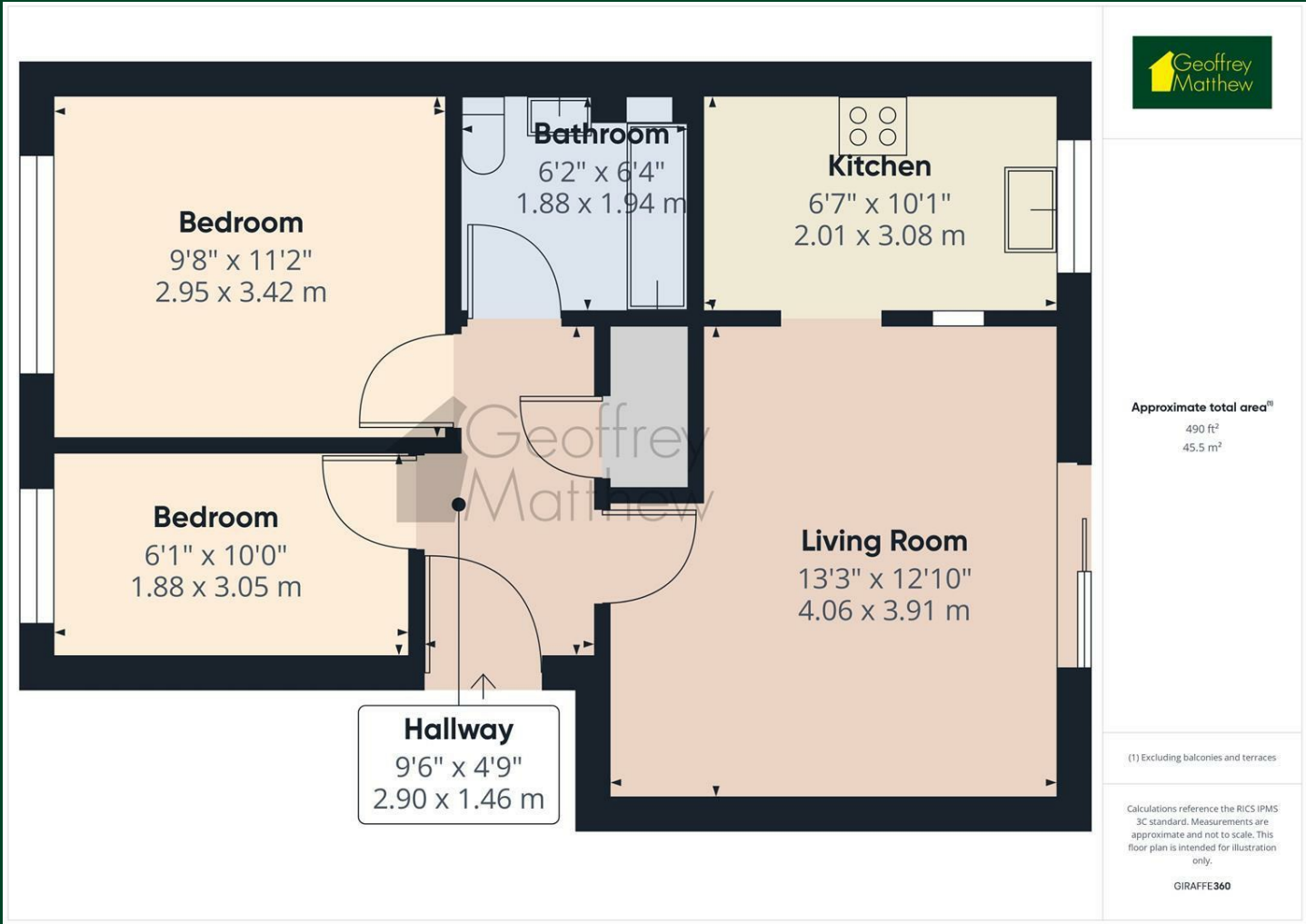
- Furnished Apartment
- Home Office / Dressing Room
- Ground Floor
- Council Tax Band B
- 1 Parking Space
- EPC Band C



[Directions](#)



Floor Plan



Council Tax Details

Band B

These particulars, whilst believed to be accurate are set out as a general outline only for guidance and do not constitute any part of an offer or contract. Intending purchasers should not rely on them as statements of representation of fact, but must satisfy themselves by inspection or otherwise as to their accuracy. No person in this firms employment has the authority to make or give any representation or warranty in respect of the property.

Energy Efficiency Rating			Environmental Impact (CO ₂) Rating		
	Current	Potential		Current	Potential
Very energy efficient - lower running costs			Very environmentally friendly - lower CO ₂ emissions		
(92 plus) A			(92 plus) A		
(81-91) B			(81-91) B		
(69-80) C			(69-80) C		
(55-68) D			(55-68) D		
(39-54) E			(39-54) E		
(21-38) F			(21-38) F		
(1-20) G			(1-20) G		
Not energy efficient - higher running costs			Not environmentally friendly - higher CO ₂ emissions		
England & Wales	EU Directive 2002/91/EC		England & Wales	EU Directive 2002/91/EC	